

Teileliste

www.pixelhobby.com

Anzahl an Basisplatten = 2 (4" x 5")
Anzahl der Pixel-Vierecke = 42
Anzahl der Farben = 19

Erforderliche Pixel-Vierecke pro Farbe:

120 = 3
135 = 1
172 = 2
277 = 3
288 = 6
300 = 4
314 = 2
370 = 1
402 = 1
404 = 2
410 = 1
441 = 4
464 = 3
487 = 1
496 = 1
501 = 1
530 = 2
531 = 3
553 = 1

Material zu bestellen bei:

www.pixeln.ch

Pixelhobby Online Shop

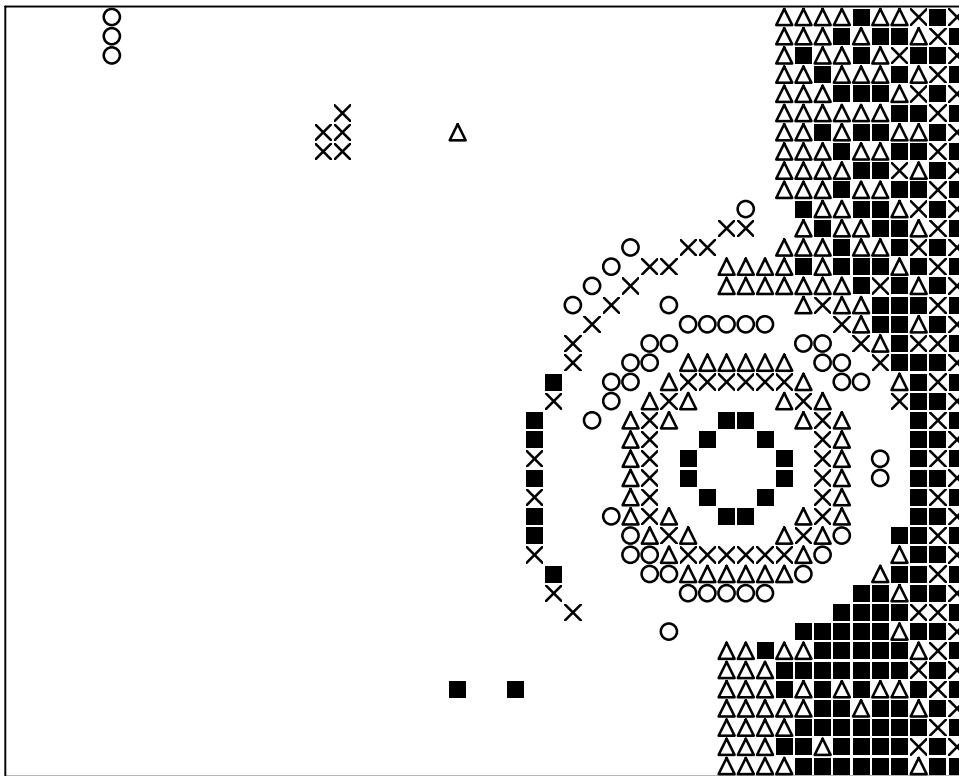
802089_oldtimer-blauw
2017-09-13

Durch internationales Patent geschützt

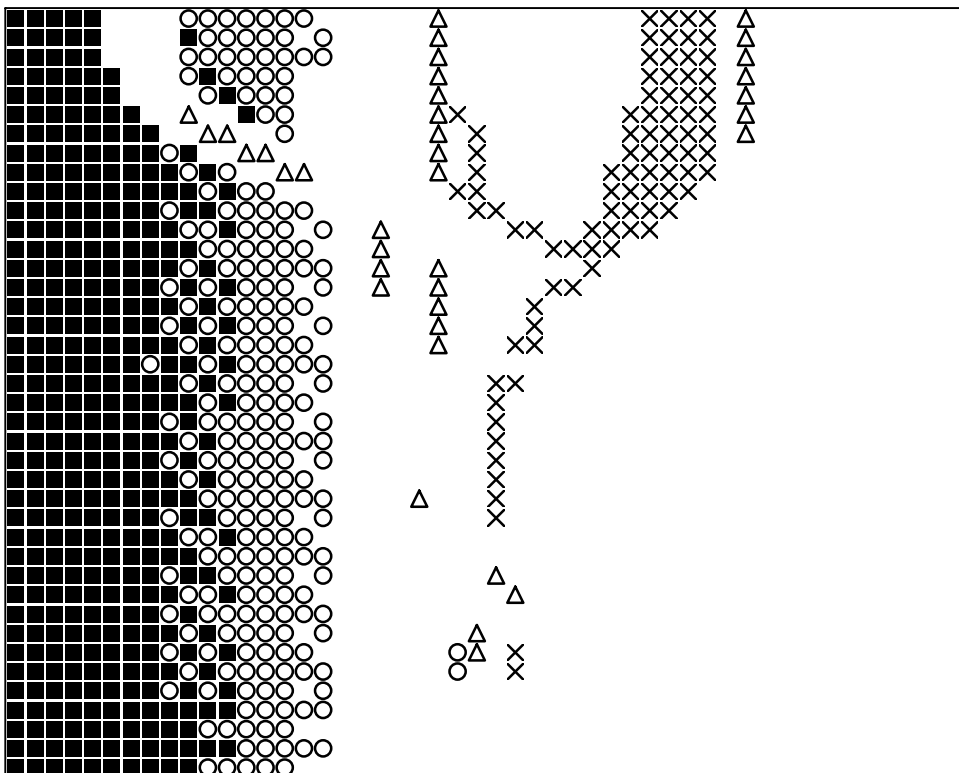


Frame: 2 x 1 P

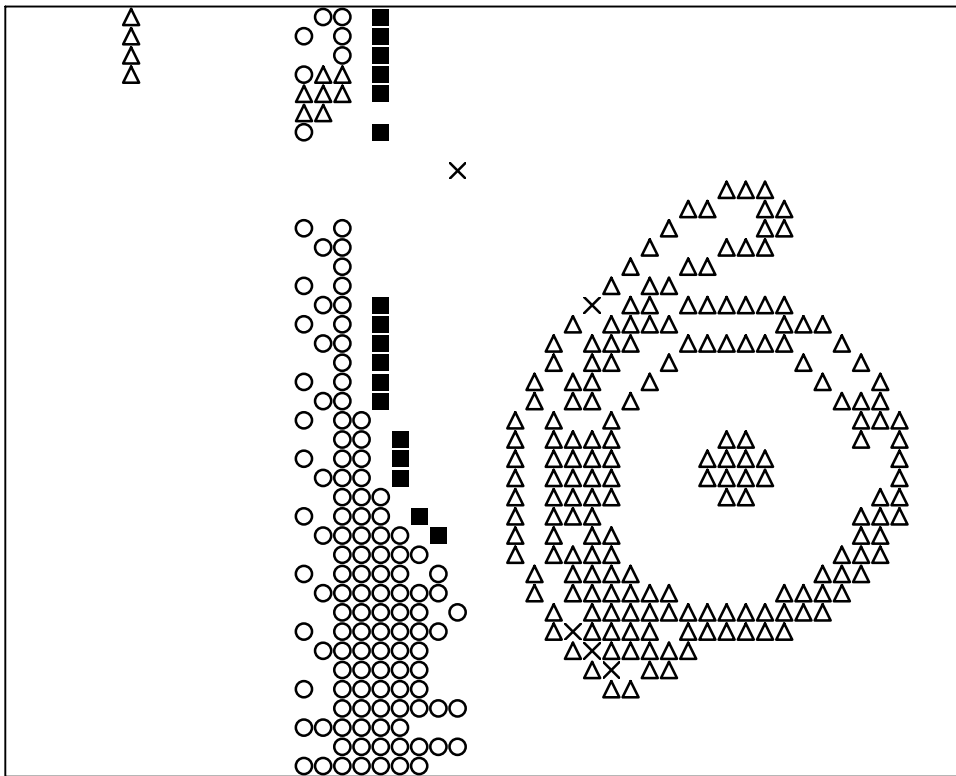




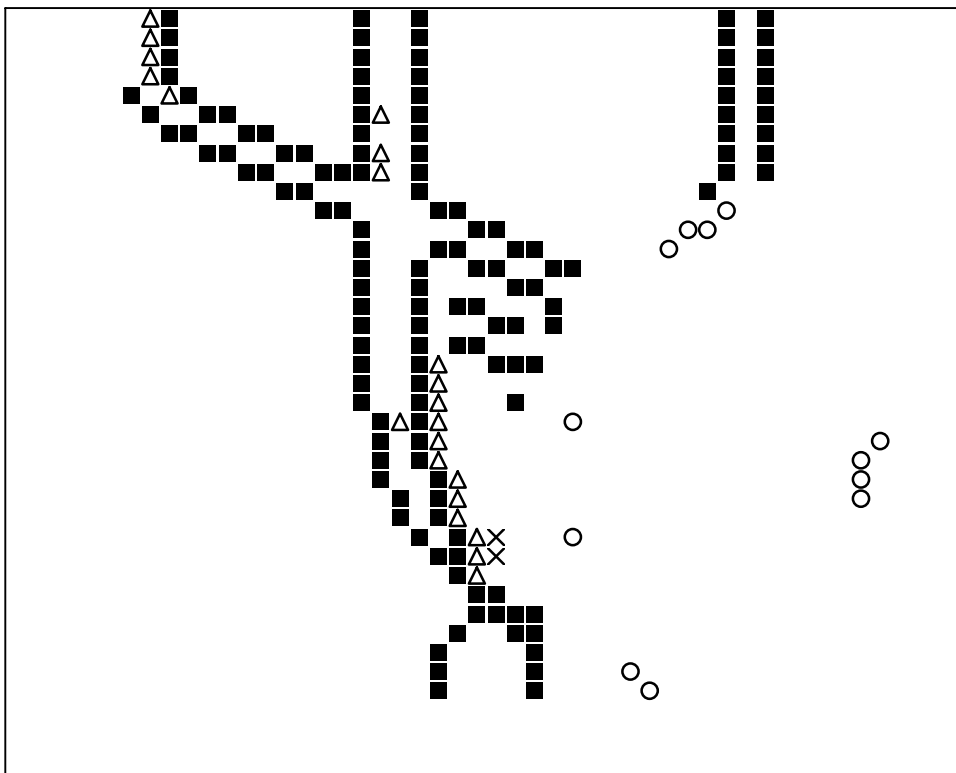
Basisplatte 1
Pixel-Farbe 120 = ■
Pixel-Farbe 135 = ○
Pixel-Farbe 172 = ×
Pixel-Farbe 277 = △



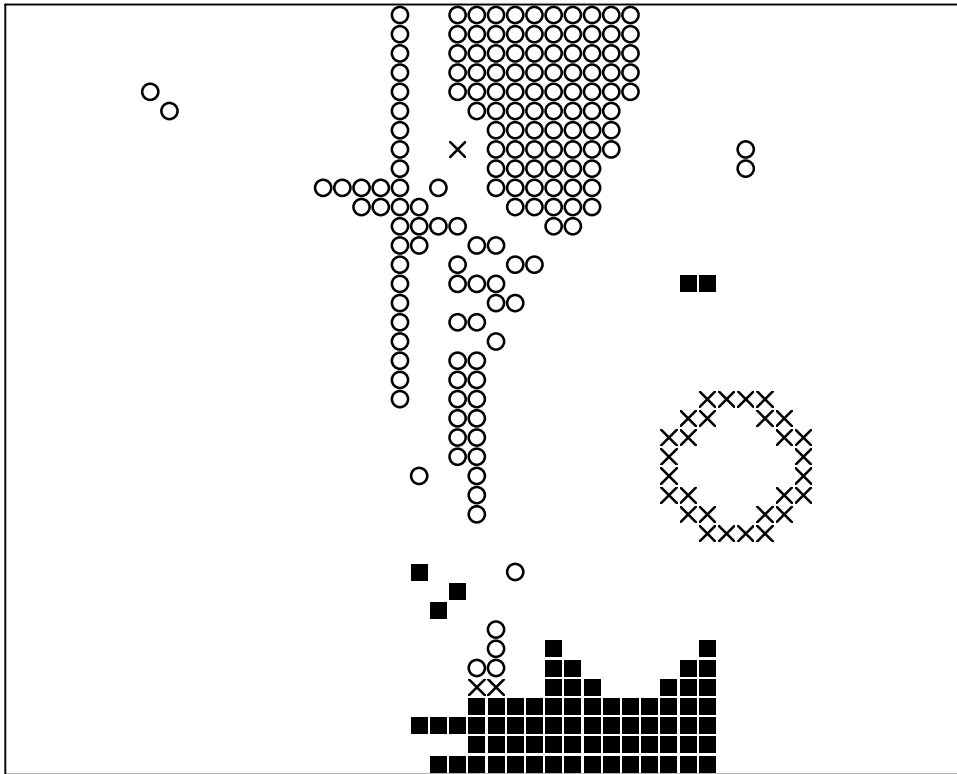
Basisplatte 1
Pixel-Farbe 288 = ■
Pixel-Farbe 300 = ○
Pixel-Farbe 314 = ×
Pixel-Farbe 370 = △



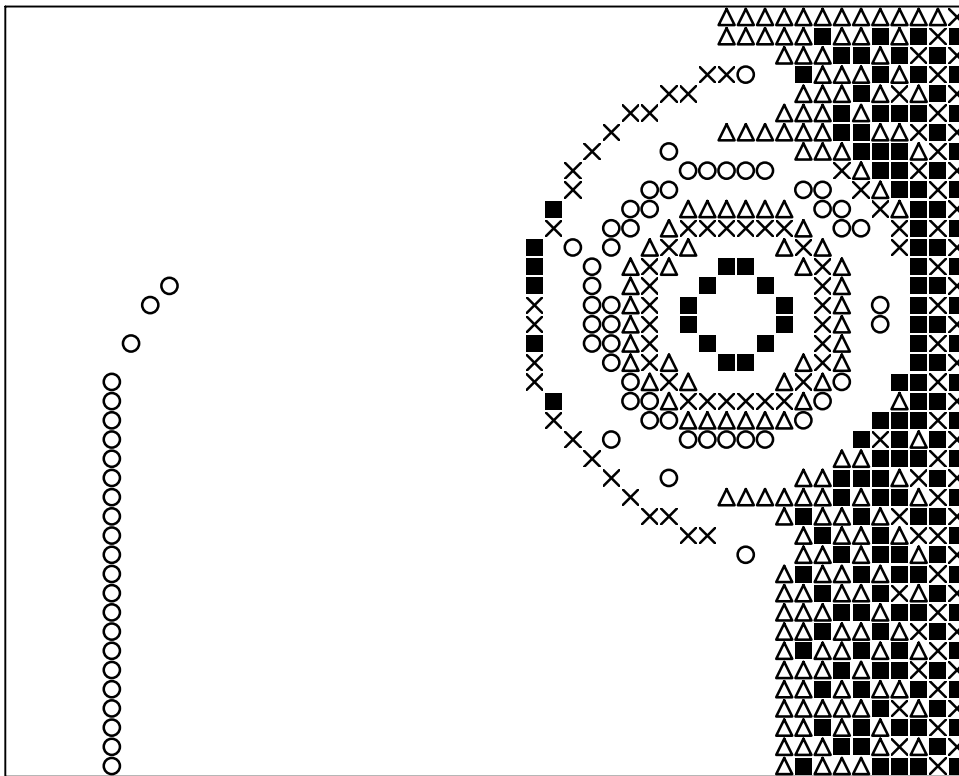
Basisplatte 1
Pixel-Farbe 402 = ■
Pixel-Farbe 404 = ○
Pixel-Farbe 410 = ×
Pixel-Farbe 441 = △



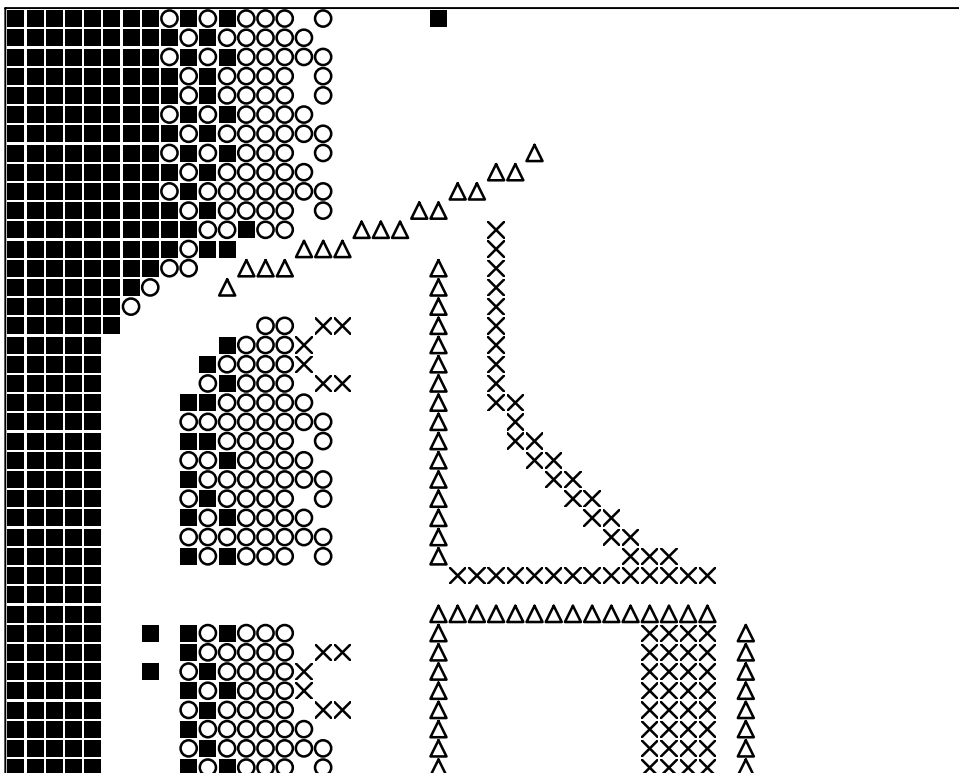
Basisplatte 1
Pixel-Farbe 464 = ■
Pixel-Farbe 487 = ○
Pixel-Farbe 496 = ×
Pixel-Farbe 501 = △



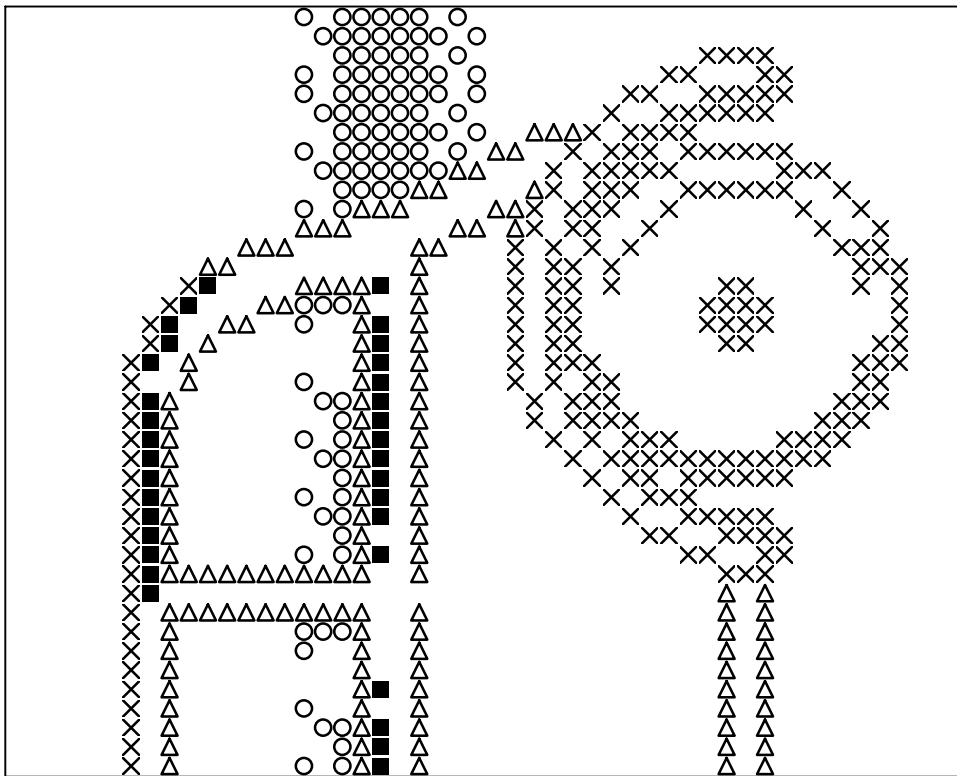
Basisplatte 1
Pixel-Farbe 530 = ■
Pixel-Farbe 531 = ○
Pixel-Farbe 553 = ×



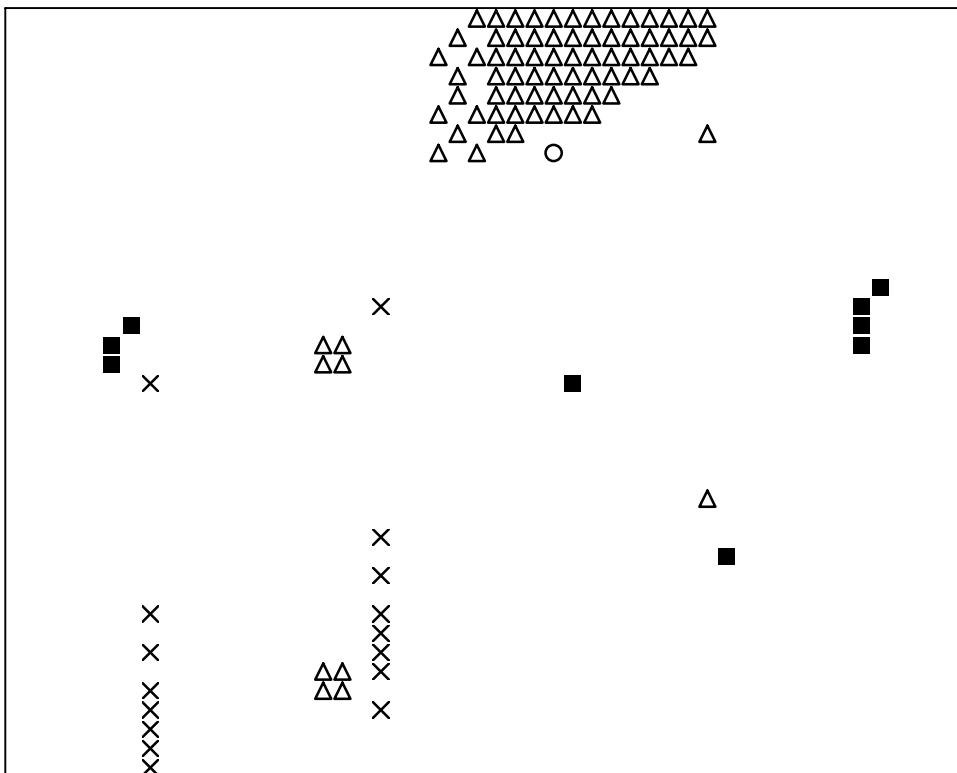
Basisplatte 2
Pixel-Farbe 120 = ■
Pixel-Farbe 135 = ○
Pixel-Farbe 172 = ×
Pixel-Farbe 277 = △



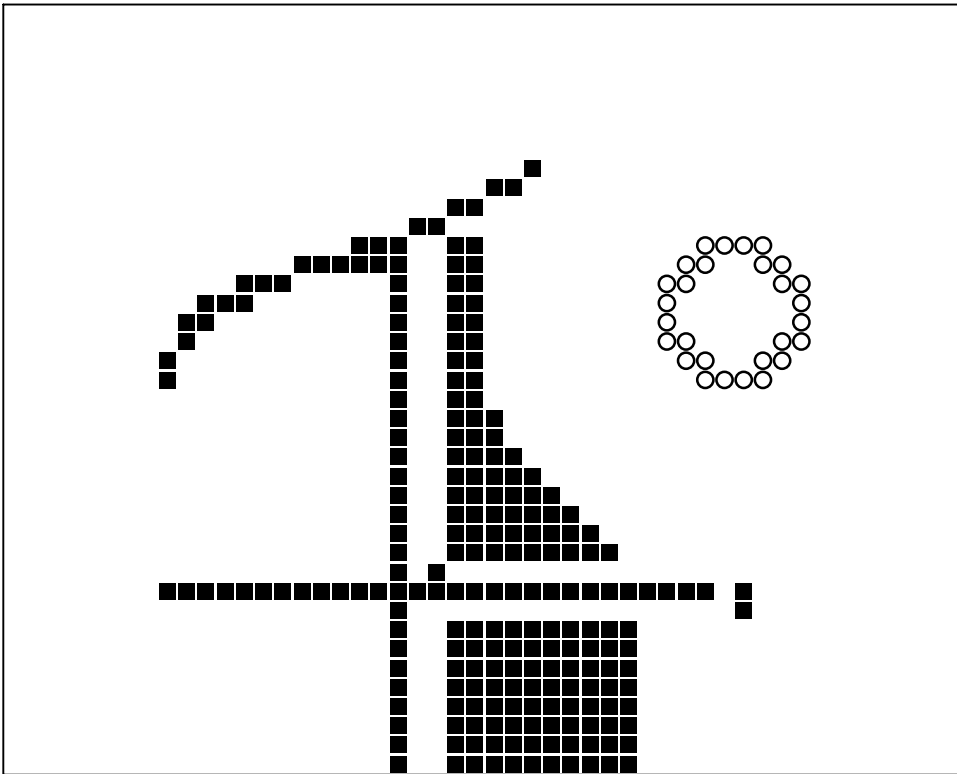
Basisplatte 2
Pixel-Farbe 288 = ■
Pixel-Farbe 300 = ○
Pixel-Farbe 314 = ×
Pixel-Farbe 370 = △



Basisplatte 2
Pixel-Farbe 402 = ■
Pixel-Farbe 404 = ○
Pixel-Farbe 441 = ×
Pixel-Farbe 464 = △



Basisplatte 2
Pixel-Farbe 487 = ■
Pixel-Farbe 496 = ○
Pixel-Farbe 501 = ×
Pixel-Farbe 530 = △



Basisplatte 2
Pixel-Farbe 531 = ■
Pixel-Farbe 553 = ○