

Teilleiste

www.pixelhobby.com

Anzahl an Basisplatten = 2 (4" x 5")
Anzahl der Pixel-Vierecke = 40
Anzahl der Farben = 18

Erforderliche Pixel-Vierecke pro Farbe:

100 = 1
126 = 1
131 = 3
133 = 2
180 = 1
224 = 1
250 = 3
251 = 2
270 = 1
288 = 8
300 = 1
342 = 4
343 = 4
345 = 1
371 = 1
376 = 4
391 = 1
429 = 1

Material zu bestellen bei:

www.pixeln.ch

Pixelhobby Online Shop

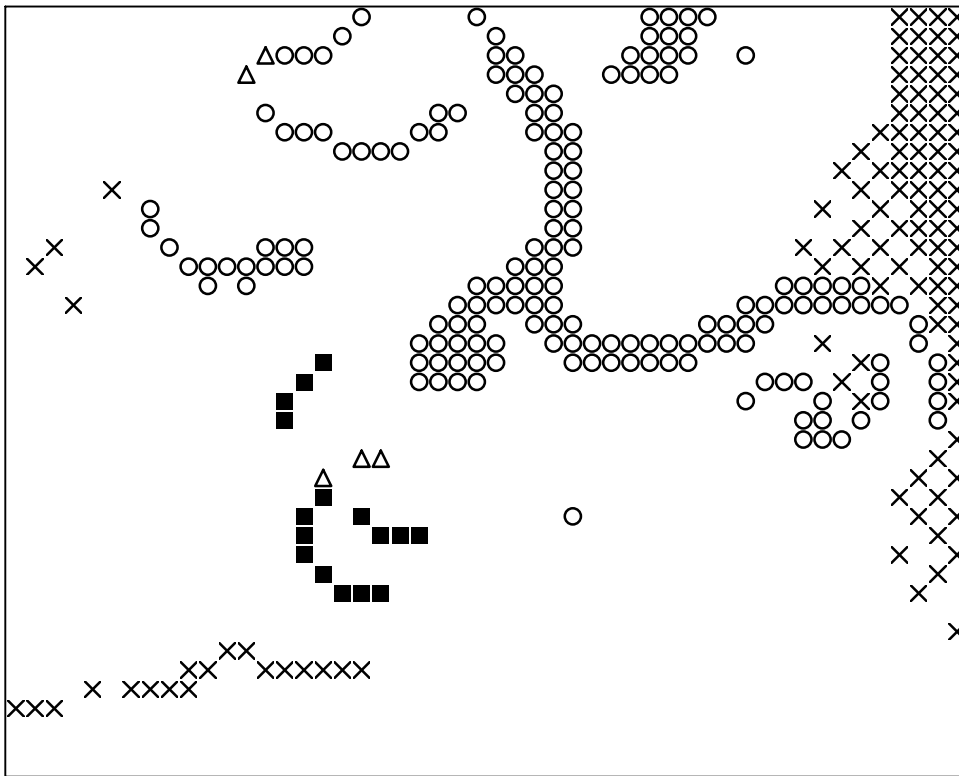
802087_aapje
2017-09-13

Durch internationales Patent geschützt

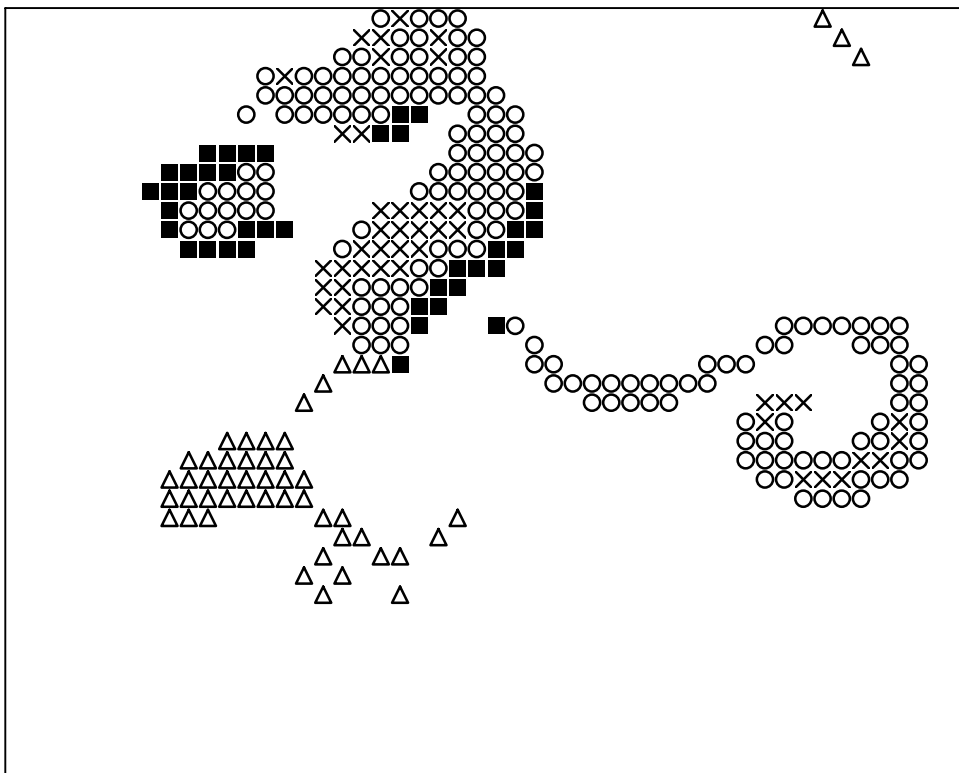


Frame: 2 x 1 P

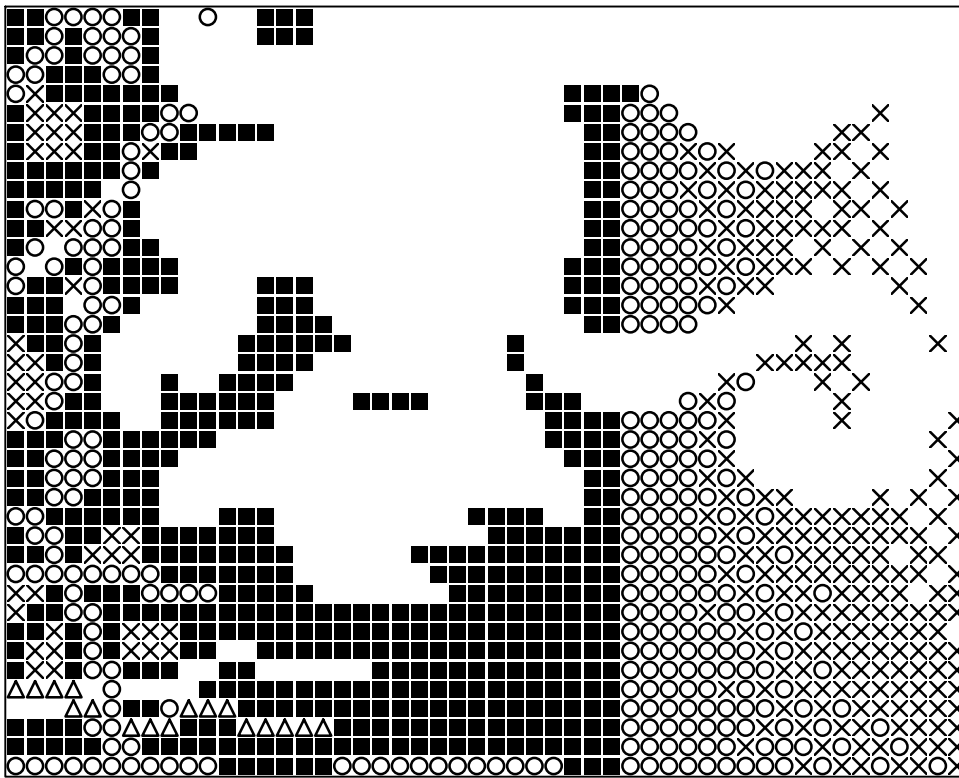




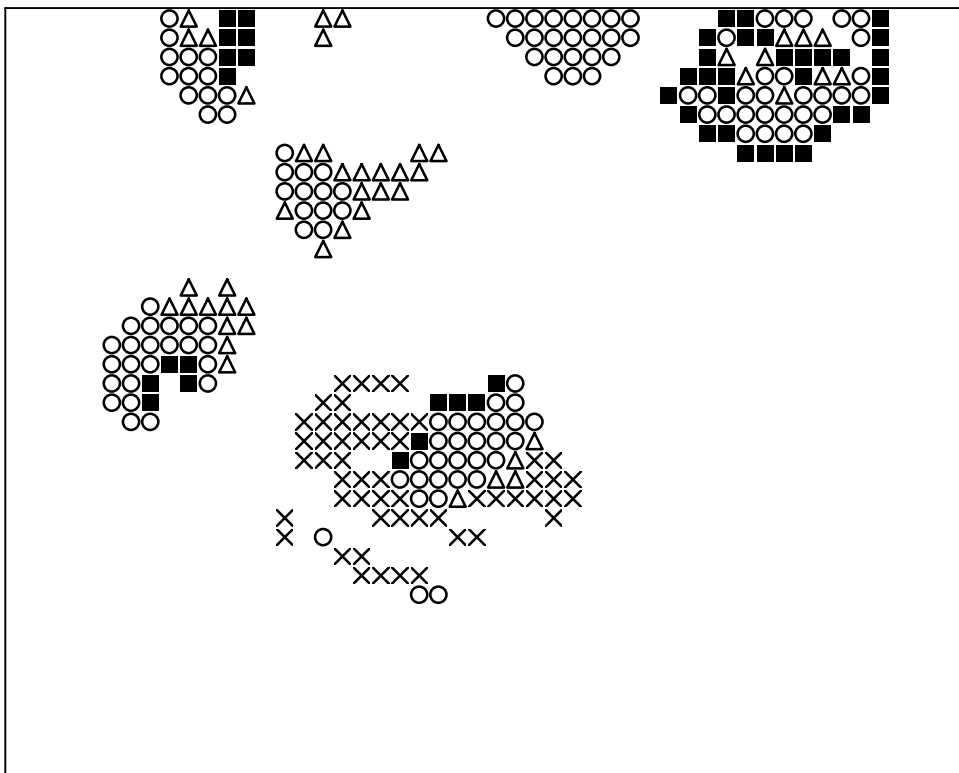
Basisplatte 1
Pixel-Farbe 100 = ■
Pixel-Farbe 131 = ○
Pixel-Farbe 133 = ×
Pixel-Farbe 180 = △



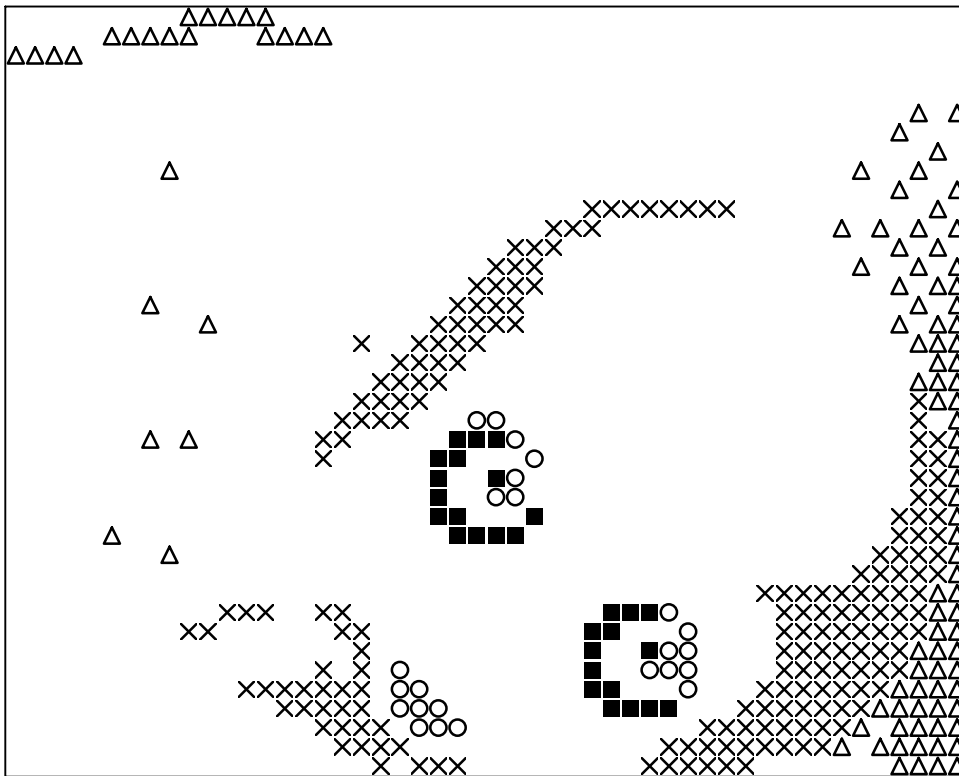
Basisplatte 1
Pixel-Farbe 224 = ■
Pixel-Farbe 250 = ○
Pixel-Farbe 251 = ×
Pixel-Farbe 270 = △



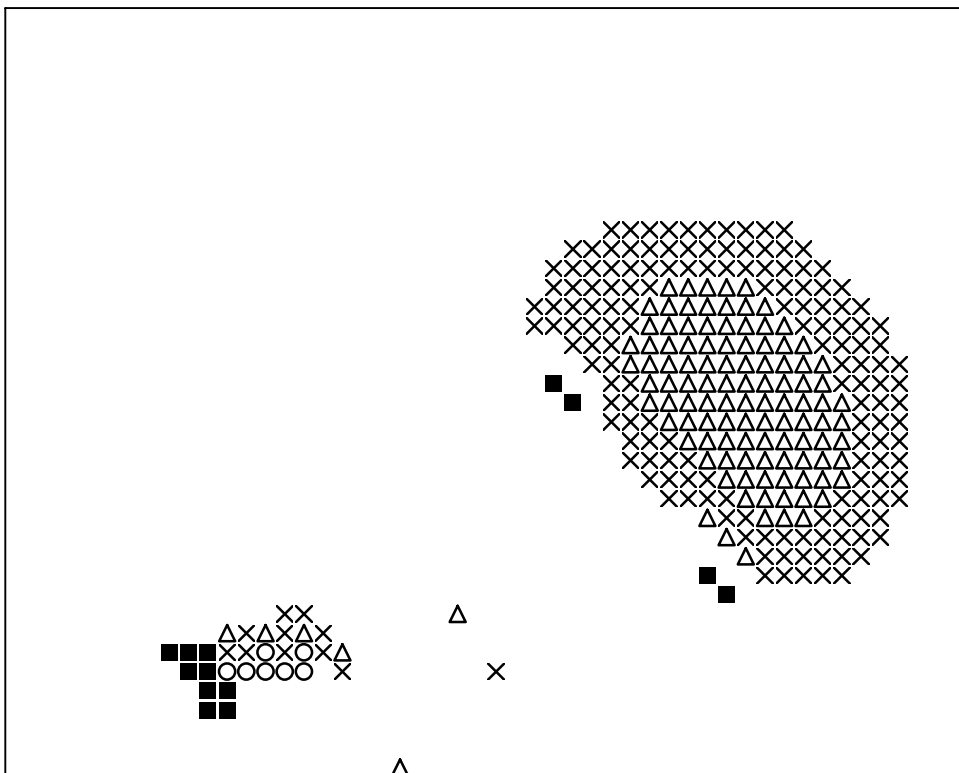
Basisplatte 1
Pixel-Farbe 288 = ■
Pixel-Farbe 342 = ○
Pixel-Farbe 343 = ×
Pixel-Farbe 345 = △



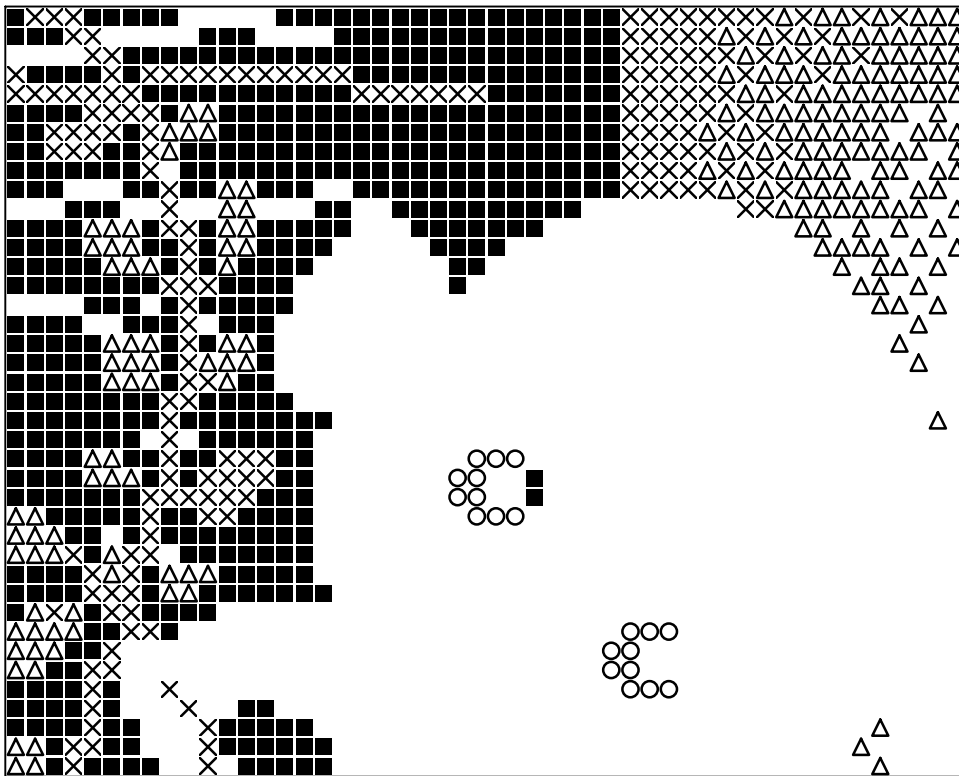
Basisplatte 1
Pixel-Farbe 371 = ■
Pixel-Farbe 376 = ○
Pixel-Farbe 391 = ×
Pixel-Farbe 429 = △



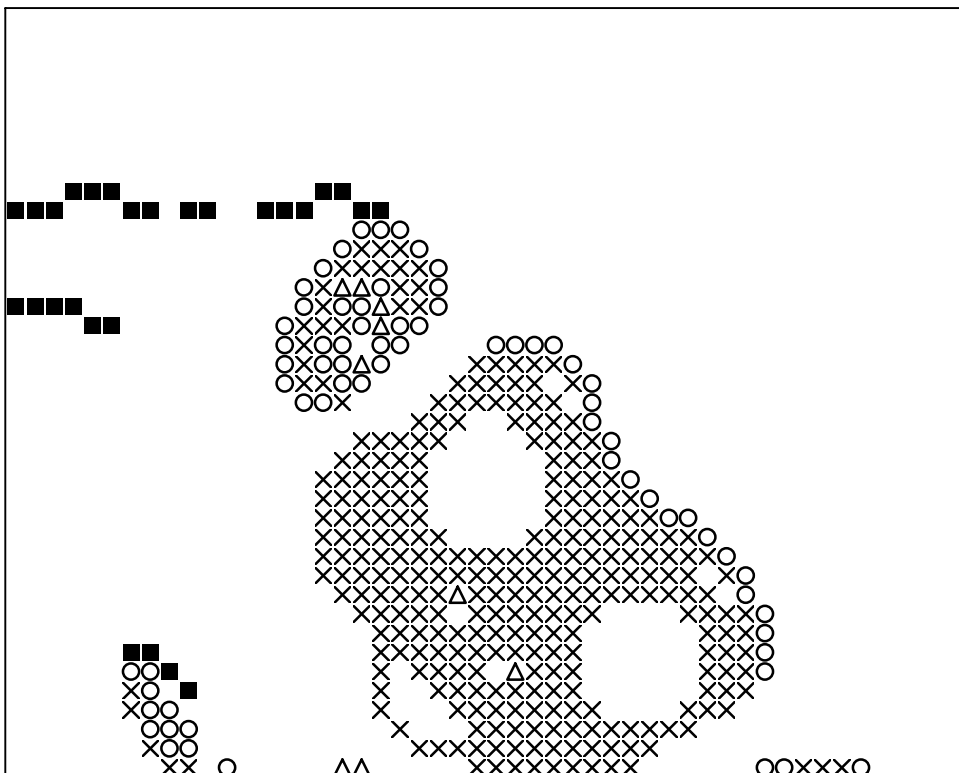
Basisplatte 2
Pixel-Farbe 100 = ■
Pixel-Farbe 126 = ○
Pixel-Farbe 131 = ×
Pixel-Farbe 133 = △



Basisplatte 2
Pixel-Farbe 180 = ■
Pixel-Farbe 224 = ○
Pixel-Farbe 250 = ×
Pixel-Farbe 251 = △



Basisplatte 2
Pixel-Farbe 288 = ■
Pixel-Farbe 300 = ○
Pixel-Farbe 342 = ×
Pixel-Farbe 343 = △



Basisplatte 2
Pixel-Farbe 345 = ■
Pixel-Farbe 371 = ○
Pixel-Farbe 376 = ×
Pixel-Farbe 429 = △