

Teilleiste

www.pixelhobby.com

Anzahl an Basisplatten = 2 (4" x 5")
Anzahl der Pixel-Vierecke = 43
Anzahl der Farben = 22

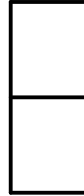
Erforderliche Pixel-Vierecke pro Farbe:

100 = 1
131 = 1
134 = 1
182 = 1
220 = 1
245 = 1
269 = 4
270 = 8
288 = 3
300 = 2
342 = 1
343 = 2
376 = 3
389 = 1
412 = 1
441 = 3
459 = 1
493 = 1
511 = 2
519 = 1
520 = 1
530 = 3

Material zu bestellen bei:

www.pixeln.ch

Pixelhobby Online Shop

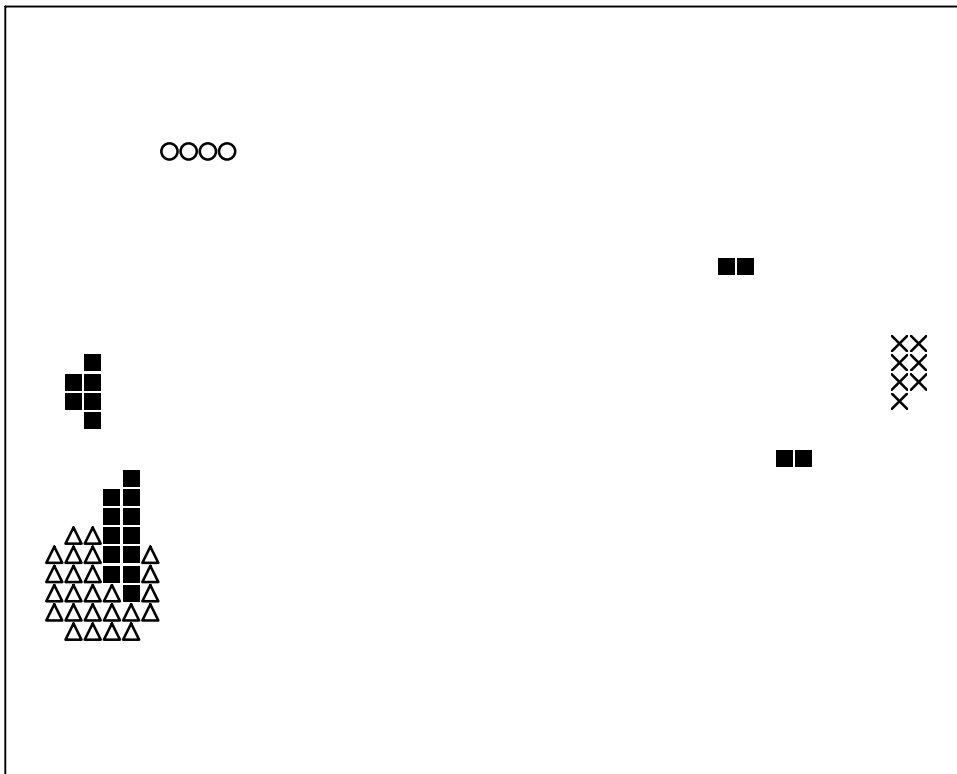


Frame: 1 x 2 P

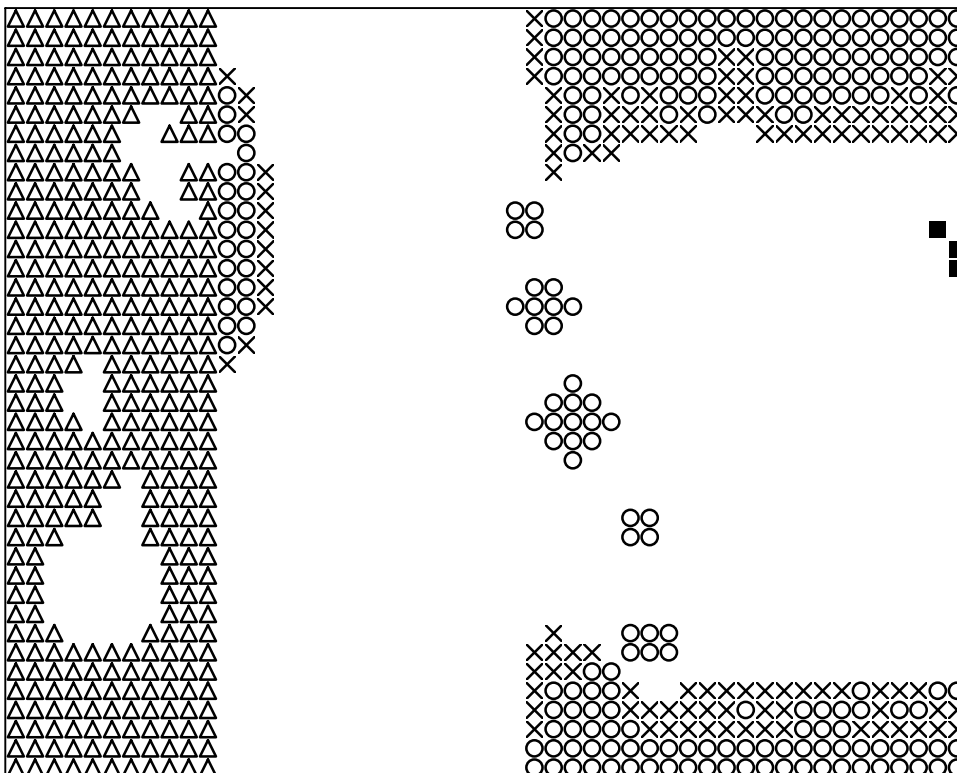
802071_Hawai
2017-11-09

Durch internationals Patent geschützt

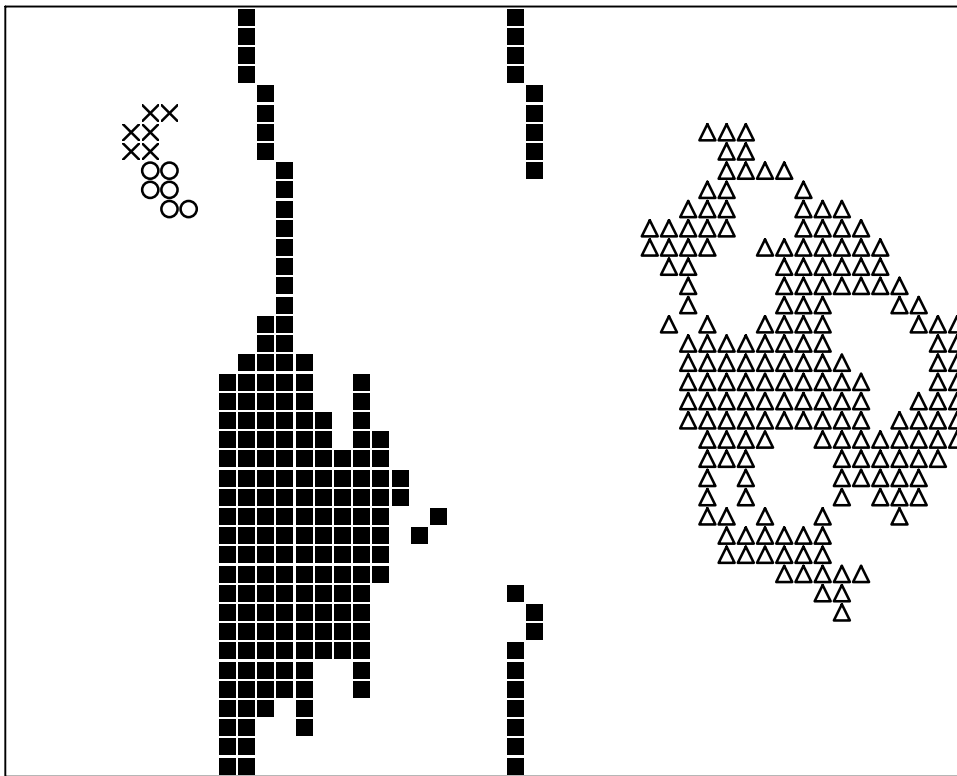




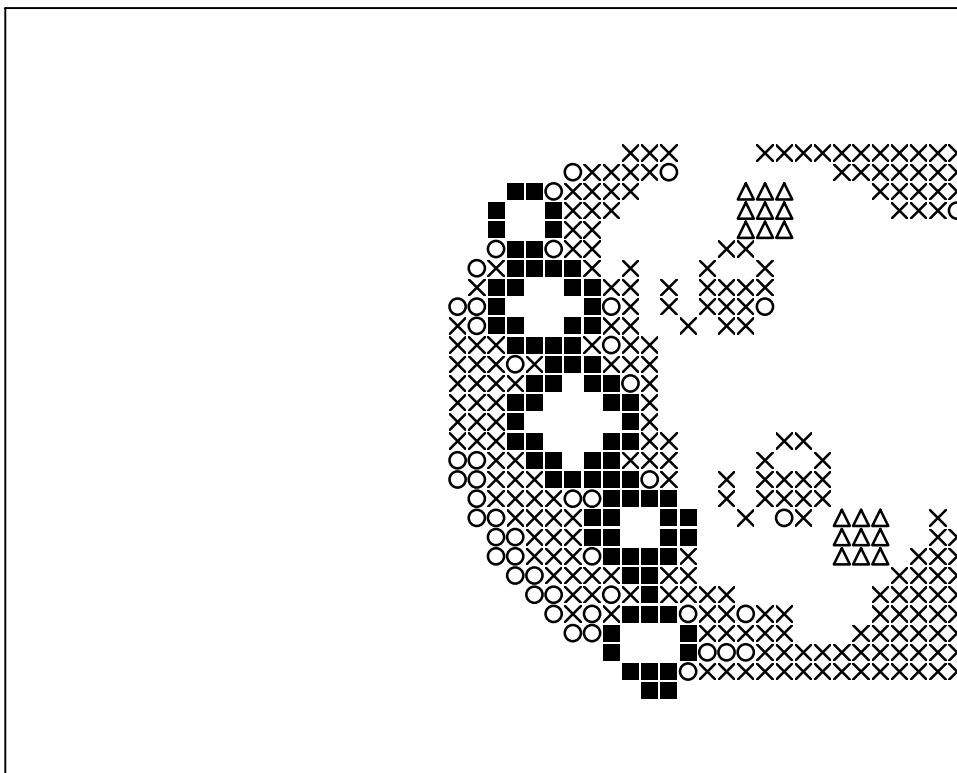
Basisplatte 1
Pixel-Farbe 100 = ■
Pixel-Farbe 131 = ○
Pixel-Farbe 134 = ×
Pixel-Farbe 182 = △



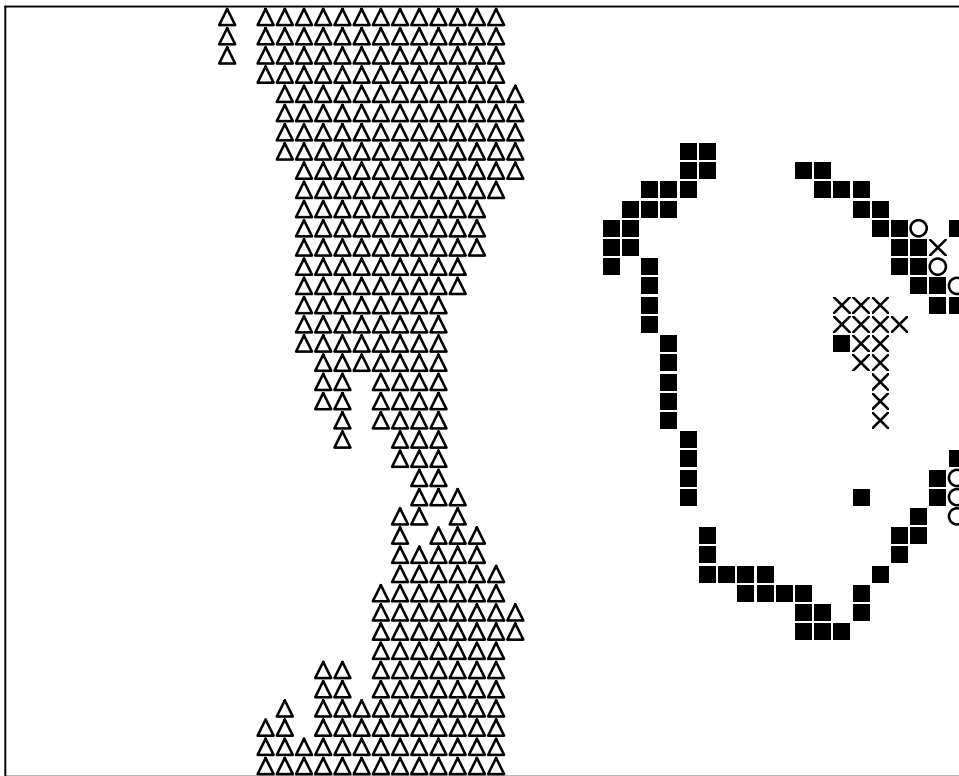
Basisplatte 1
Pixel-Farbe 220 = ■
Pixel-Farbe 269 = ○
Pixel-Farbe 270 = ×
Pixel-Farbe 288 = △



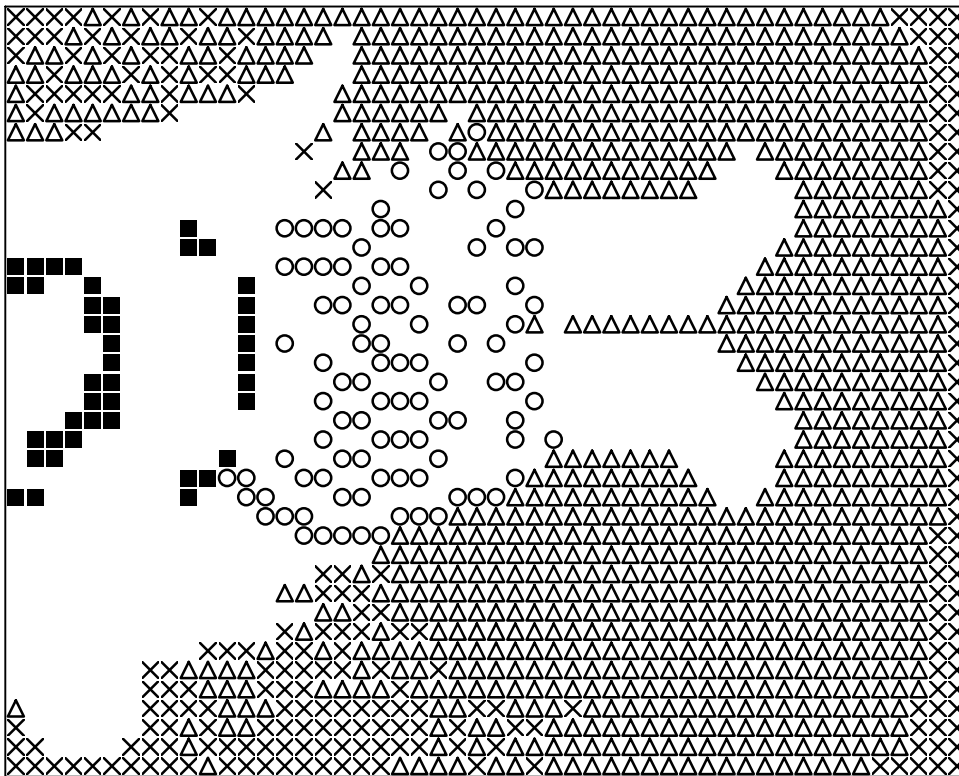
Basisplatte 1
Pixel-Farbe 300 = ■
Pixel-Farbe 342 = ○
Pixel-Farbe 343 = ×
Pixel-Farbe 376 = △



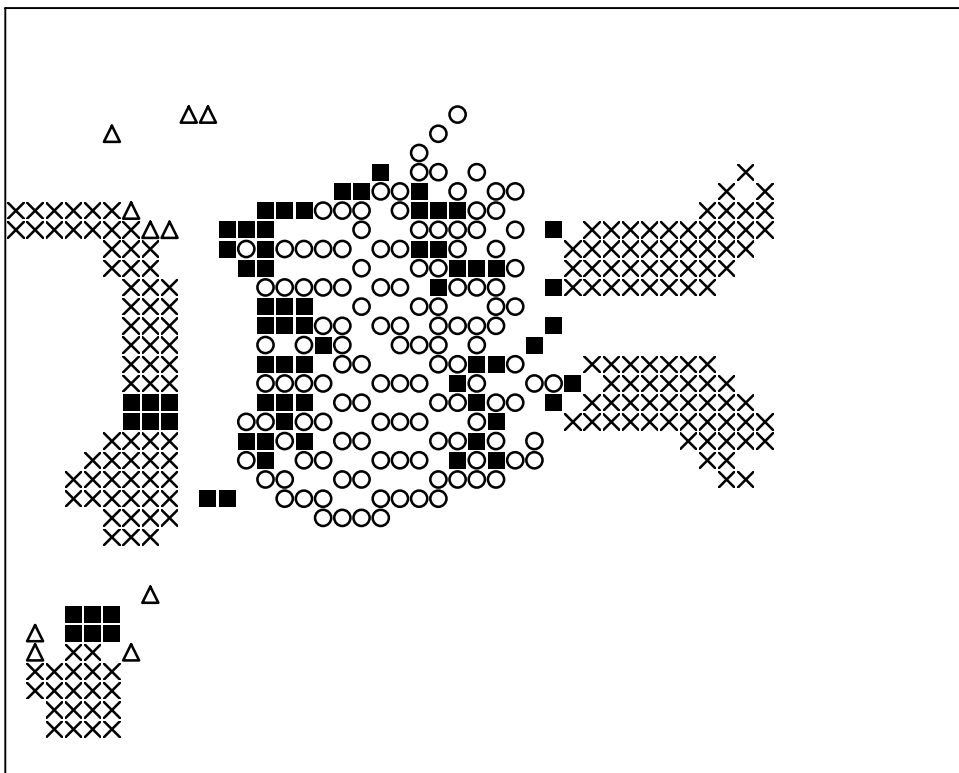
Basisplatte 1
Pixel-Farbe 389 = ■
Pixel-Farbe 412 = ○
Pixel-Farbe 441 = ×
Pixel-Farbe 459 = △



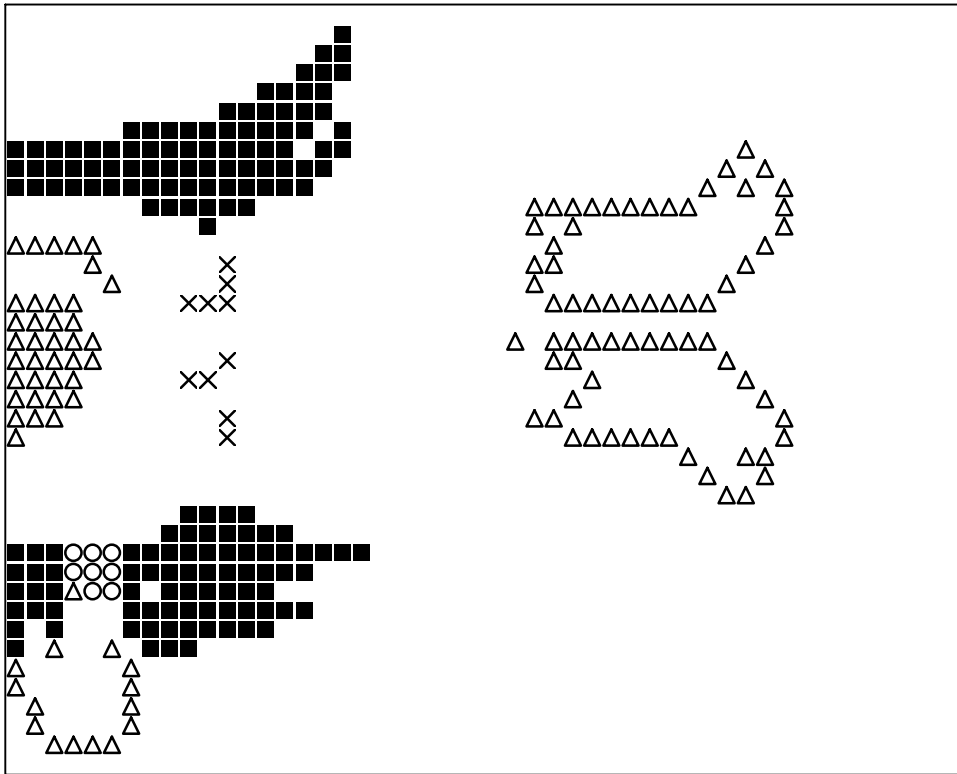
Basisplatte 1
Pixel-Farbe 511 = ■
Pixel-Farbe 519 = ○
Pixel-Farbe 520 = ×
Pixel-Farbe 530 = △



Basisplatte 2
Pixel-Farbe 220 = ■
Pixel-Farbe 245 = ○
Pixel-Farbe 269 = ×
Pixel-Farbe 270 = △



Basisplatte 2
Pixel-Farbe 342 = ■
Pixel-Farbe 343 = ○
Pixel-Farbe 376 = ×
Pixel-Farbe 412 = △



Basisplatte 2
Pixel-Farbe 441 = ■
Pixel-Farbe 459 = ○
Pixel-Farbe 493 = ×
Pixel-Farbe 511 = △



Basisplatte 2
Pixel-Farbe 519 = ■
Pixel-Farbe 520 = ○