

## Teilleiste

www.pixelhobby.com

Anzahl an Basisplatten = 2 (4" x 5")  
Anzahl der Pixel-Vierecke = 35  
Anzahl der Farben = 13

Erforderliche Pixel-Vierecke pro Farbe:

100 = 3  
179 = 3  
220 = 2  
275 = 1  
284 = 2  
288 = 9  
330 = 1  
342 = 1  
343 = 4  
394 = 2  
441 = 3  
513 = 1  
523 = 3

**Material zu bestellen bei:**

**[www.pixeln.ch](http://www.pixeln.ch)**

**Pixelhobby Online Shop**

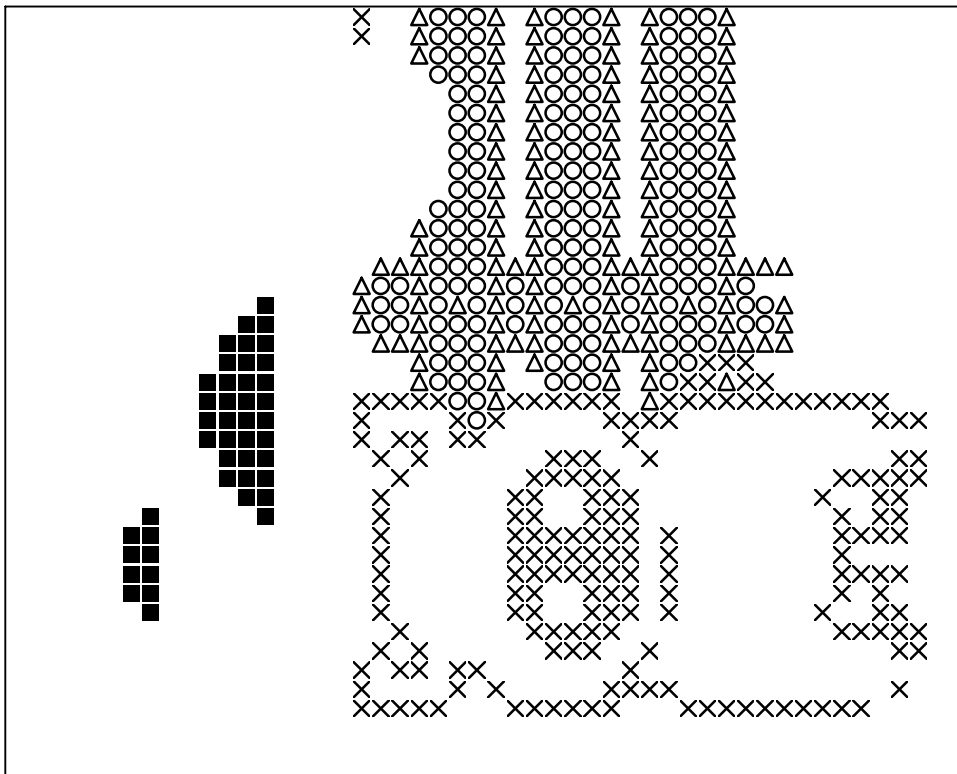
802062\_farm  
2017-09-13

Durch internationales Patent geschützt

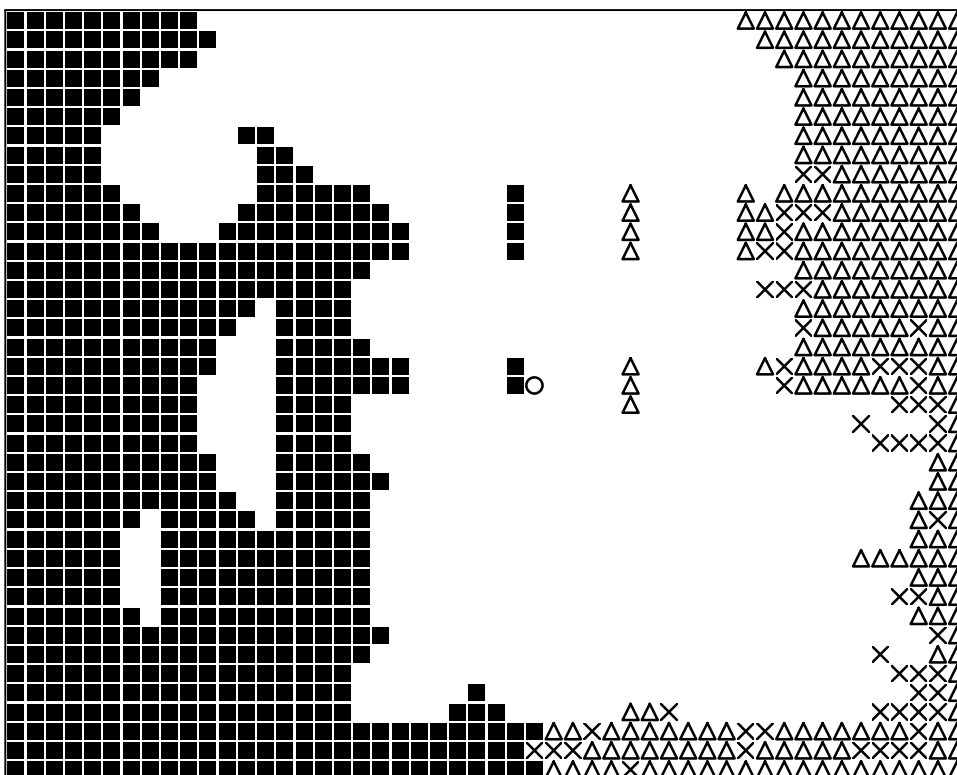


**Frame: 2 x 1 P**

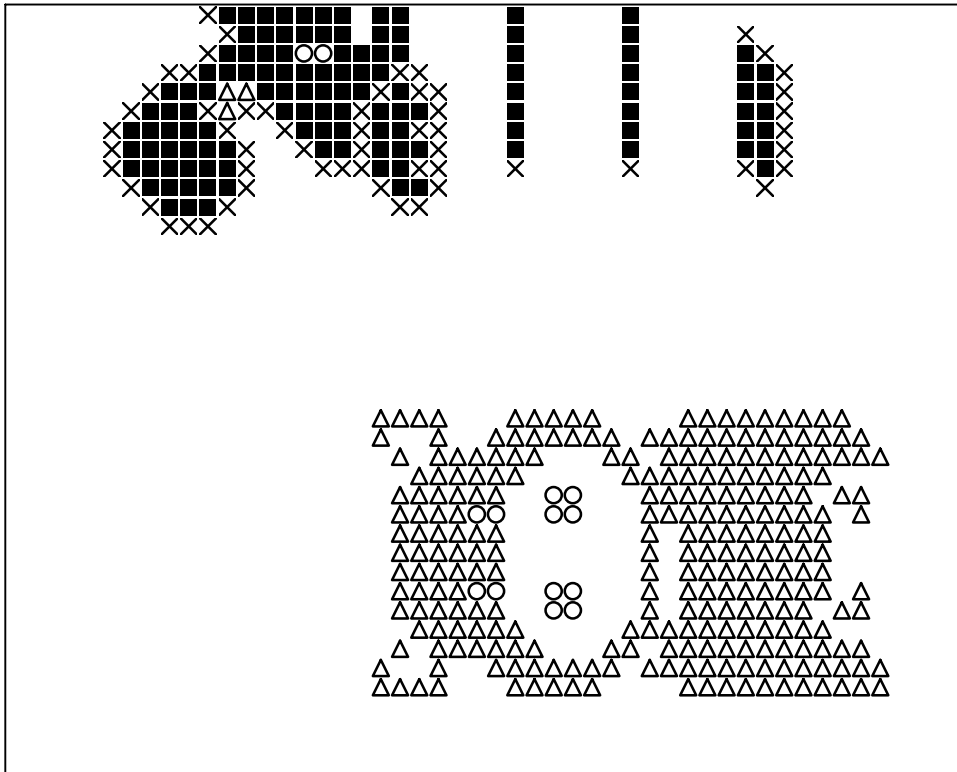




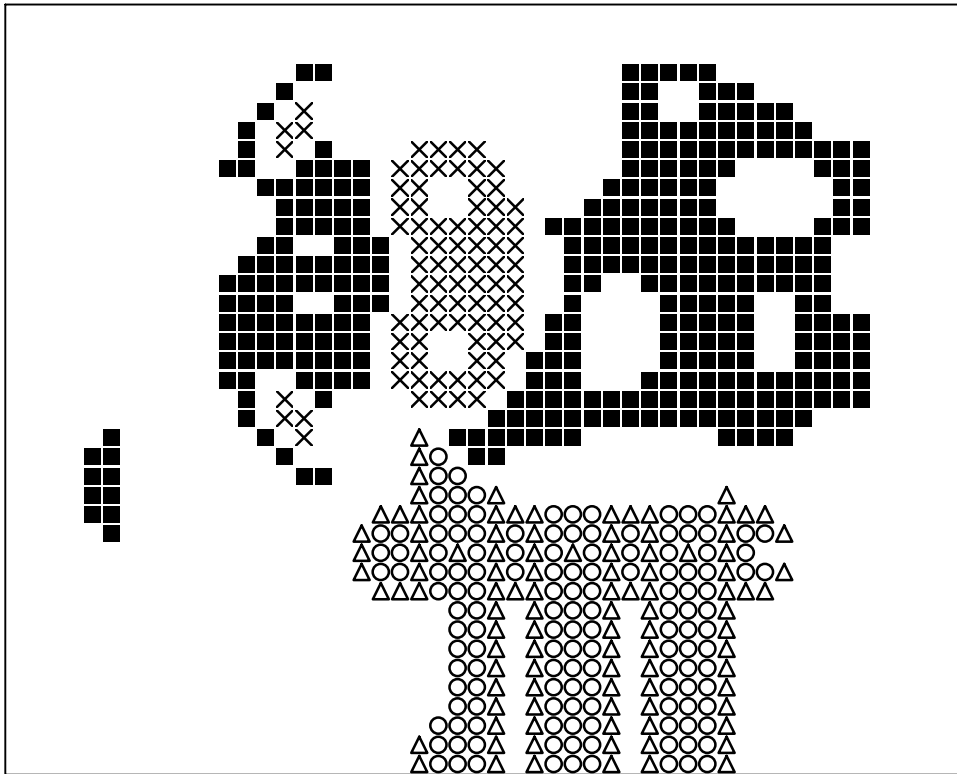
**Basisplatte 1**  
Pixel-Farbe 100 = ■  
Pixel-Farbe 179 = ○  
Pixel-Farbe 220 = ×  
Pixel-Farbe 284 = △



**Basisplatte 1**  
Pixel-Farbe 288 = ■  
Pixel-Farbe 330 = ○  
Pixel-Farbe 342 = ×  
Pixel-Farbe 343 = △



**Basisplatte 1**  
Pixel-Farbe 394 = ■  
Pixel-Farbe 441 = ○  
Pixel-Farbe 513 = ×  
Pixel-Farbe 523 = △



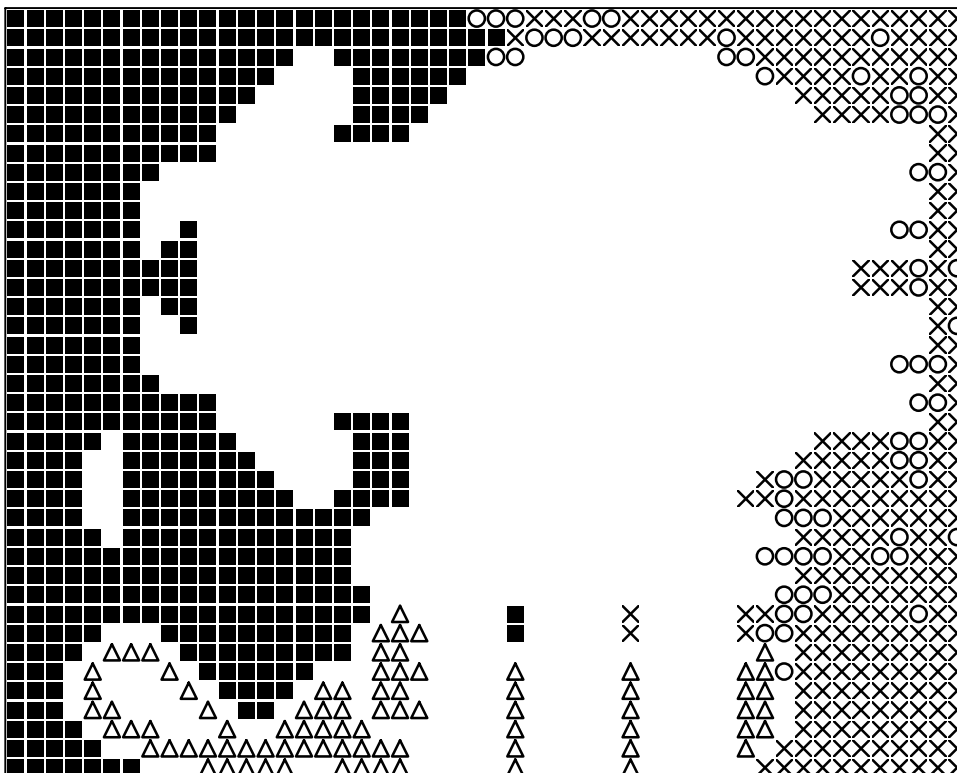
**Basisplatte 2**

Pixel-Farbe 100 = ■

Pixel-Farbe 179 = ○

Pixel-Farbe 275 = ×

Pixel-Farbe 284 = △



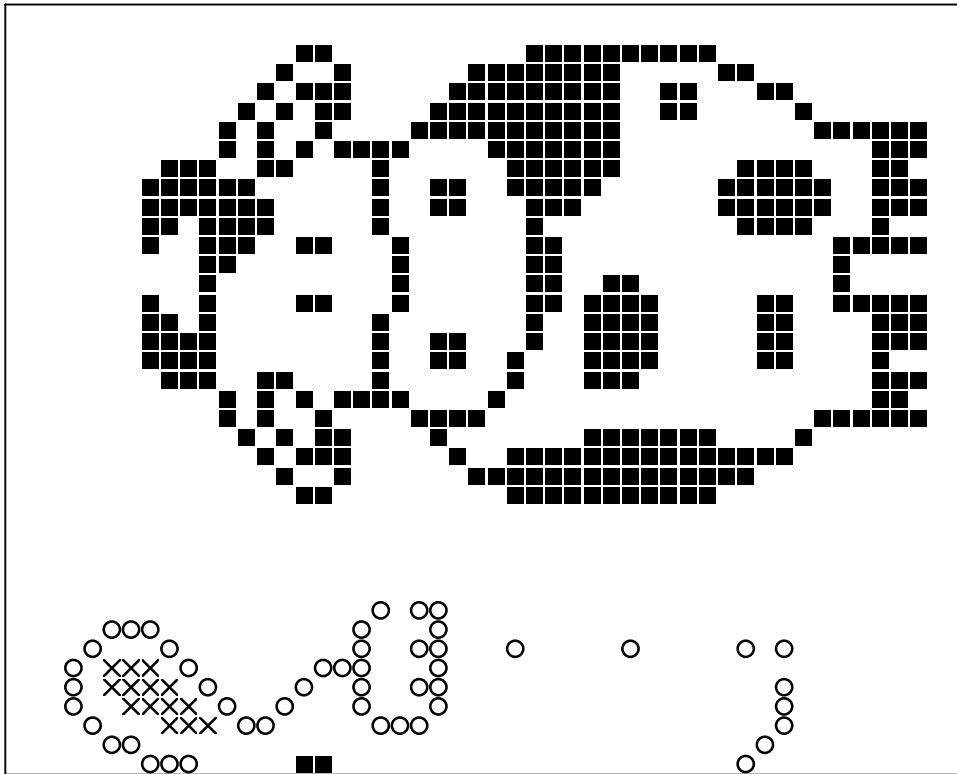
**Basisplatte 2**

Pixel-Farbe 288 = ■

Pixel-Farbe 342 = ○

Pixel-Farbe 343 = ×

Pixel-Farbe 394 = △



**Basisplatte 2**  
Pixel-Farbe 441 = ■  
Pixel-Farbe 513 = ○  
Pixel-Farbe 523 = ×