

Teilleiste

www.pixelhobby.com

Anzahl an Basisplatten = 2 (4" x 5")
Anzahl der Pixel-Vierecke = 39
Anzahl der Farben = 14

Erforderliche Pixel-Vierecke pro Farbe:

100 = 1
116 = 1
198 = 6
220 = 1
245 = 8
263 = 2
288 = 3
294 = 3
317 = 1
341 = 1
343 = 6
347 = 2
441 = 1
505 = 3

Material zu bestellen bei:

www.pixeln.ch

Pixelhobby Online Shop

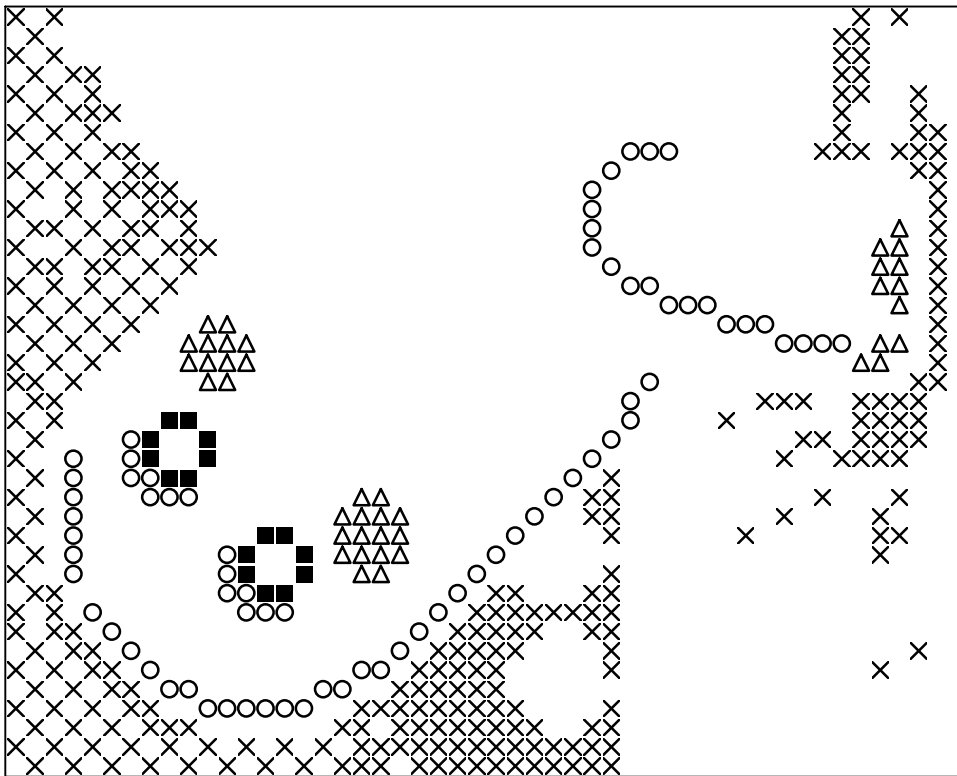
802060_turtle
2017-09-13

Durch internationales Patent geschützt

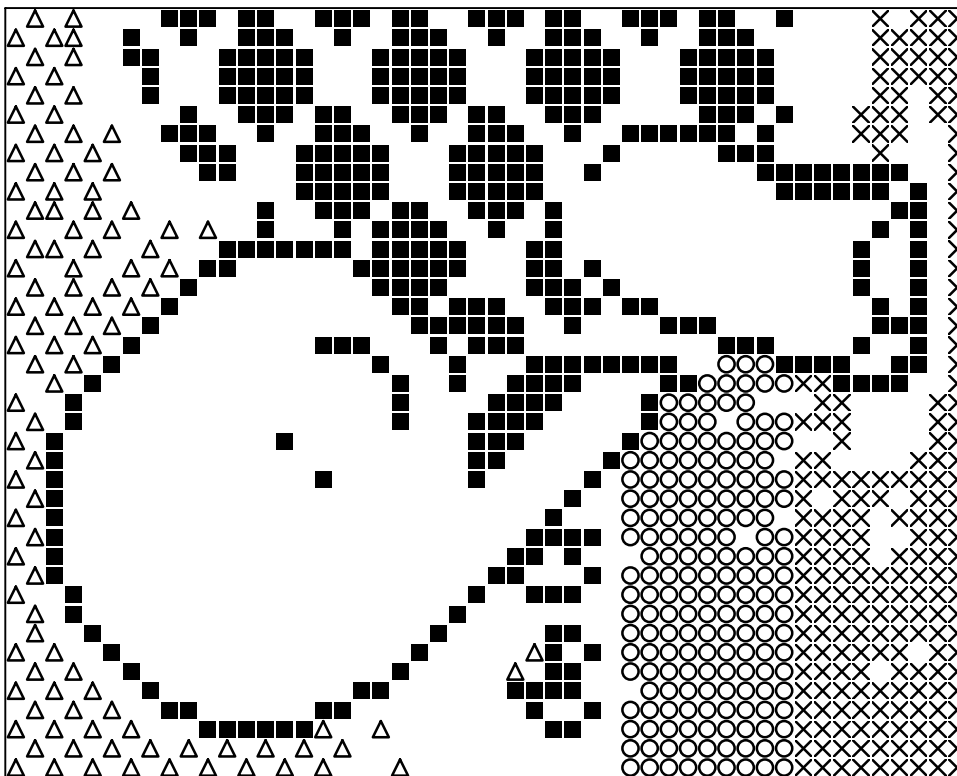


Frame: 2 x 1 P

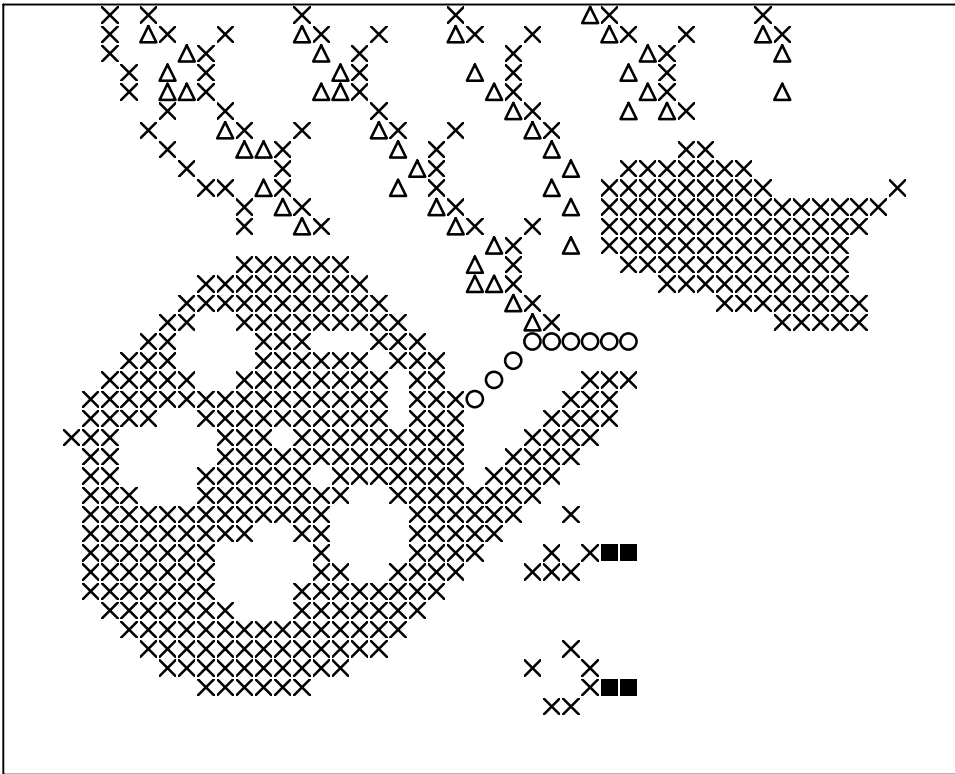




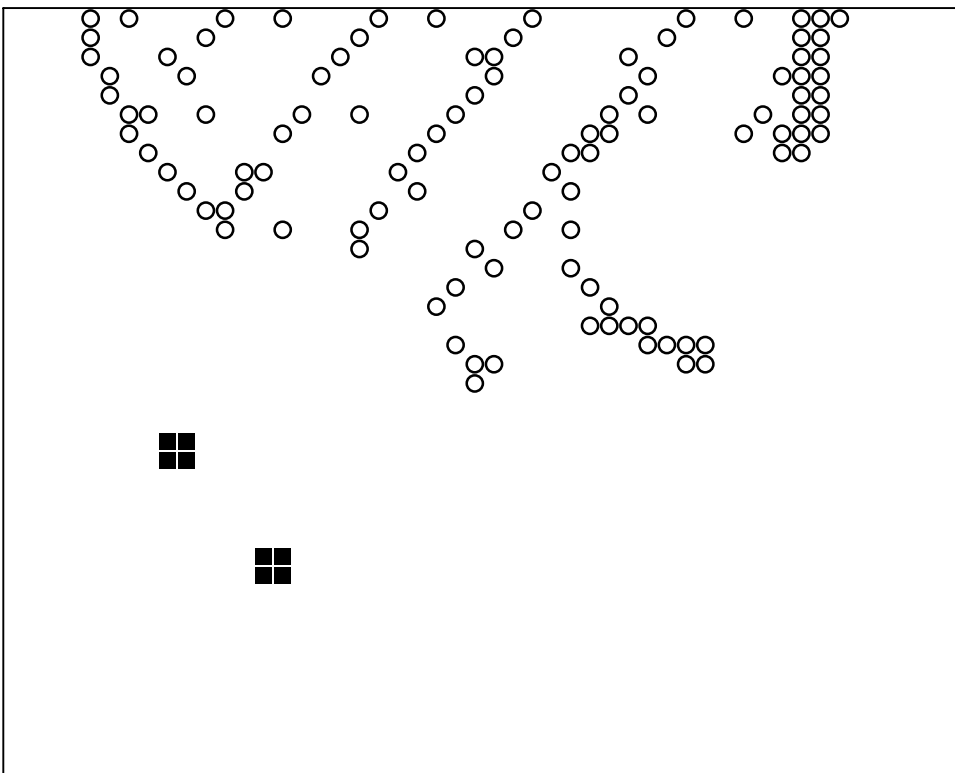
Basisplatte 1
Pixel-Farbe 100 = ■
Pixel-Farbe 116 = ○
Pixel-Farbe 198 = ×
Pixel-Farbe 220 = △



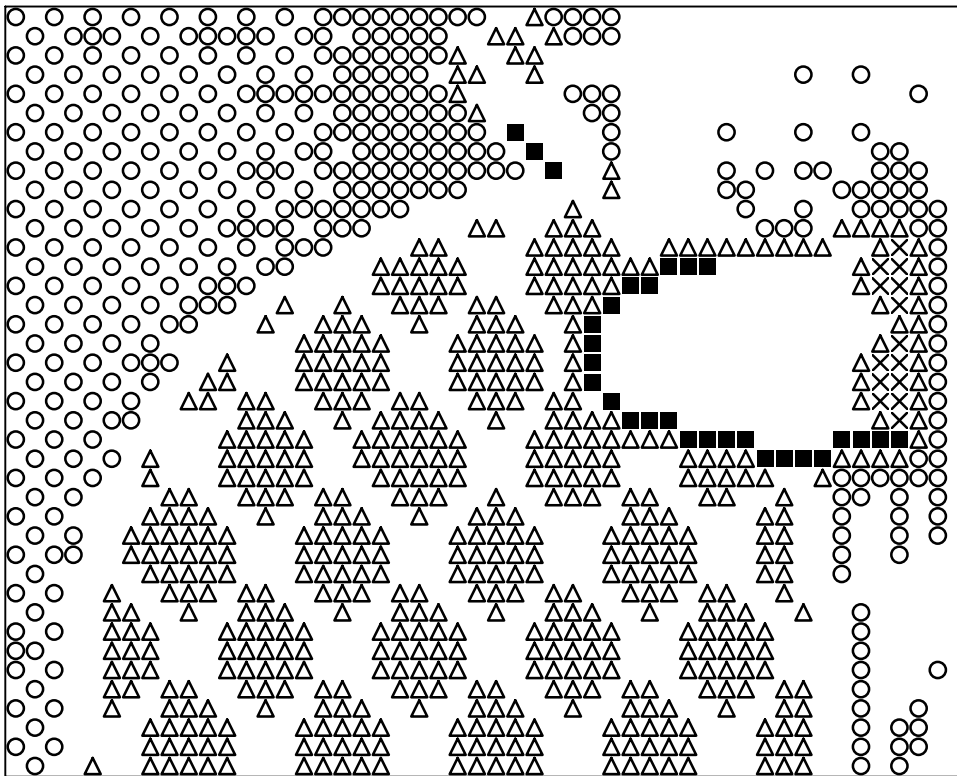
Basisplatte 1
Pixel-Farbe 245 = ■
Pixel-Farbe 263 = ○
Pixel-Farbe 288 = ×
Pixel-Farbe 294 = △



Basisplatte 1
Pixel-Farbe 317 = ■
Pixel-Farbe 341 = ○
Pixel-Farbe 343 = ×
Pixel-Farbe 347 = △



Basisplatte 1
Pixel-Farbe 441 = ■
Pixel-Farbe 505 = ○



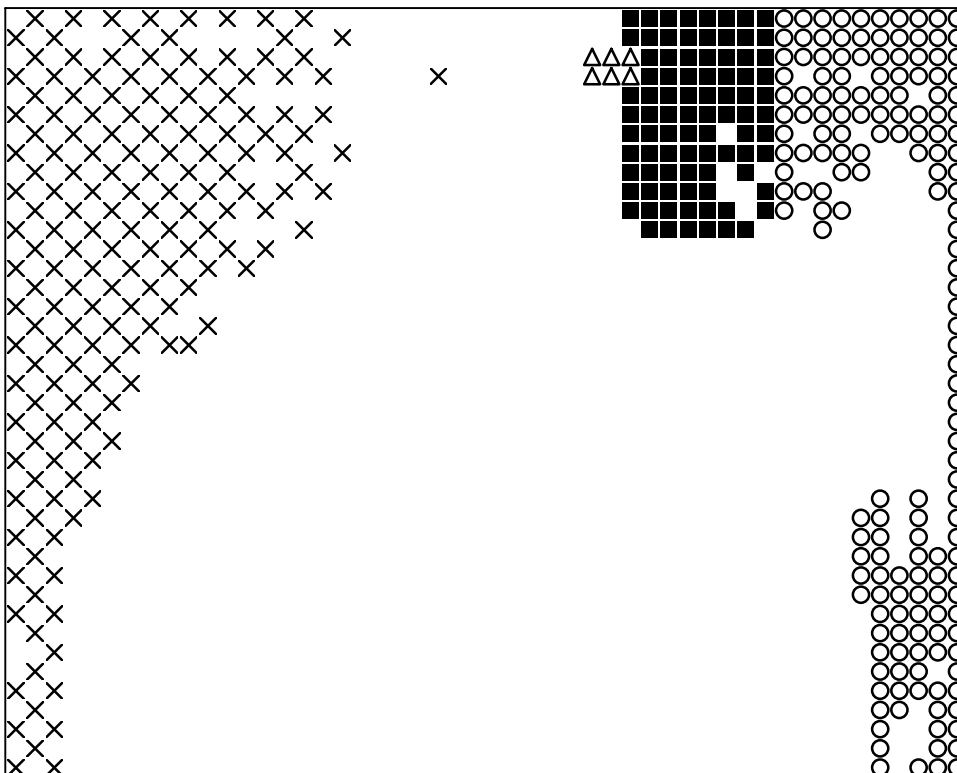
Basisplatte 2

Pixel-Farbe 116 = ■

Pixel-Farbe 198 = ○

Pixel-Farbe 220 = ×

Pixel-Farbe 245 = △



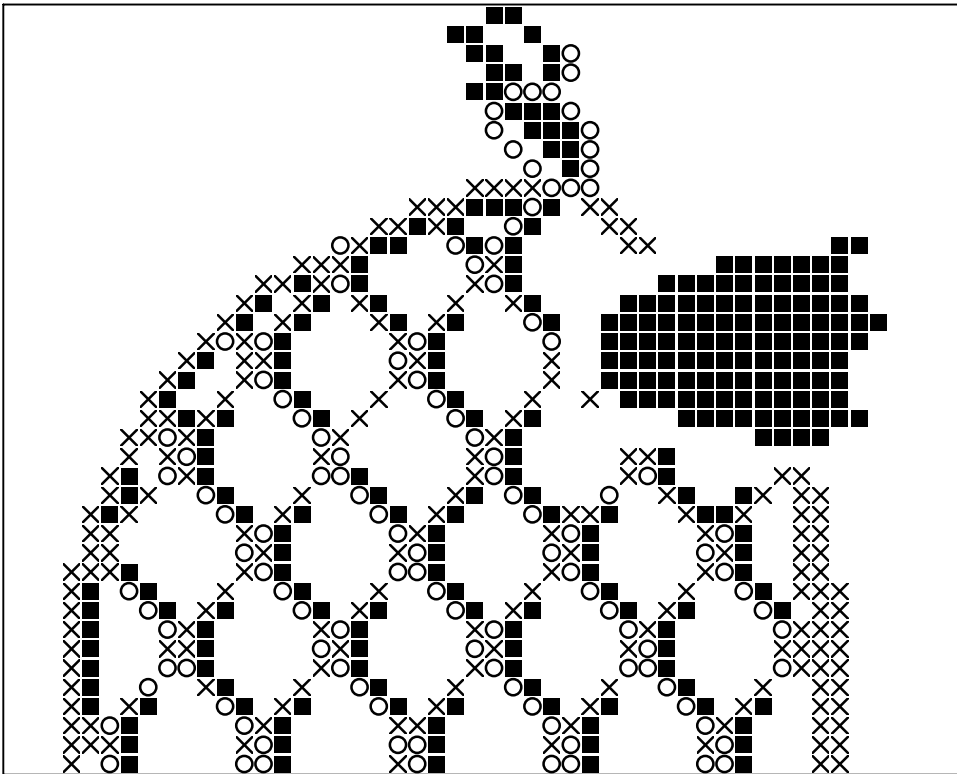
Basisplatte 2

Pixel-Farbe 263 = ■

Pixel-Farbe 288 = ○

Pixel-Farbe 294 = ×

Pixel-Farbe 317 = △



Basisplatte 2
Pixel-Farbe 343 = ■
Pixel-Farbe 347 = ○
Pixel-Farbe 505 = ×