

## Teilleiste

www.pixelhobby.com

Anzahl an Basisplatten = 2 (4" x 5")  
Anzahl der Pixel-Vierecke = 44  
Anzahl der Farben = 22

Erforderliche Pixel-Vierecke pro Farbe:

100 = 4  
130 = 1  
155 = 2  
172 = 1  
180 = 1  
218 = 1  
220 = 1  
257 = 1  
271 = 1  
274 = 1  
278 = 1  
288 = 12  
342 = 2  
343 = 3  
355 = 3  
376 = 3  
389 = 1  
391 = 1  
441 = 1  
448 = 1  
480 = 1  
528 = 1

**Material zu bestellen bei:**

**[www.pixeln.ch](http://www.pixeln.ch)**

**Pixelhobby Online Shop**

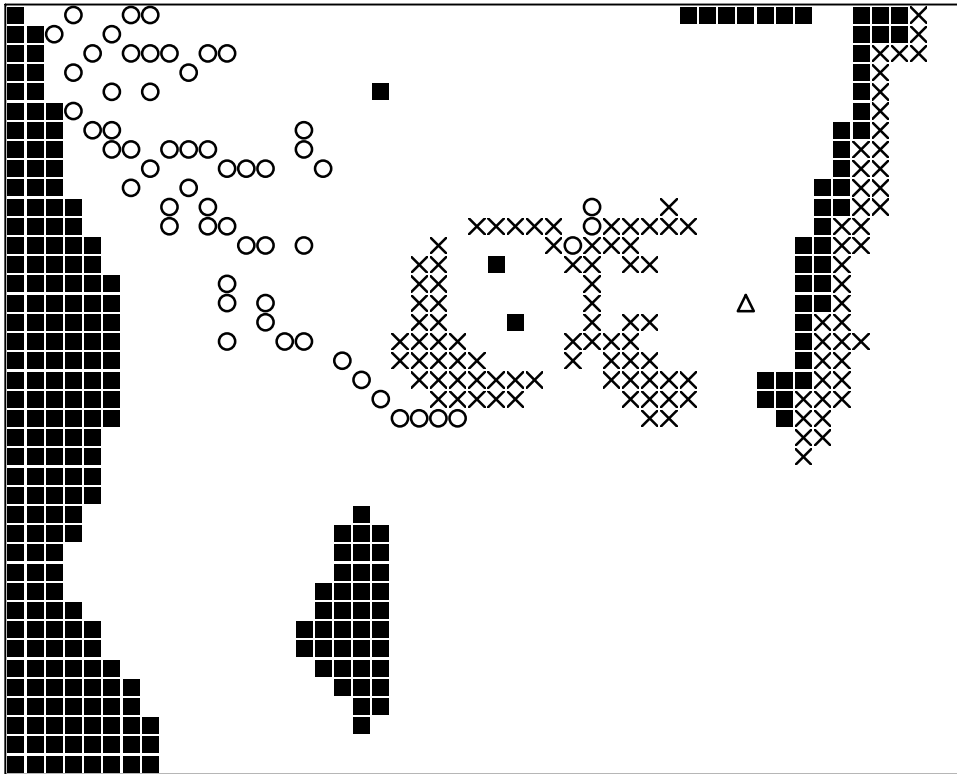
802048\_voorleesboek  
2017-09-13

Durch internationals Patent geschützt

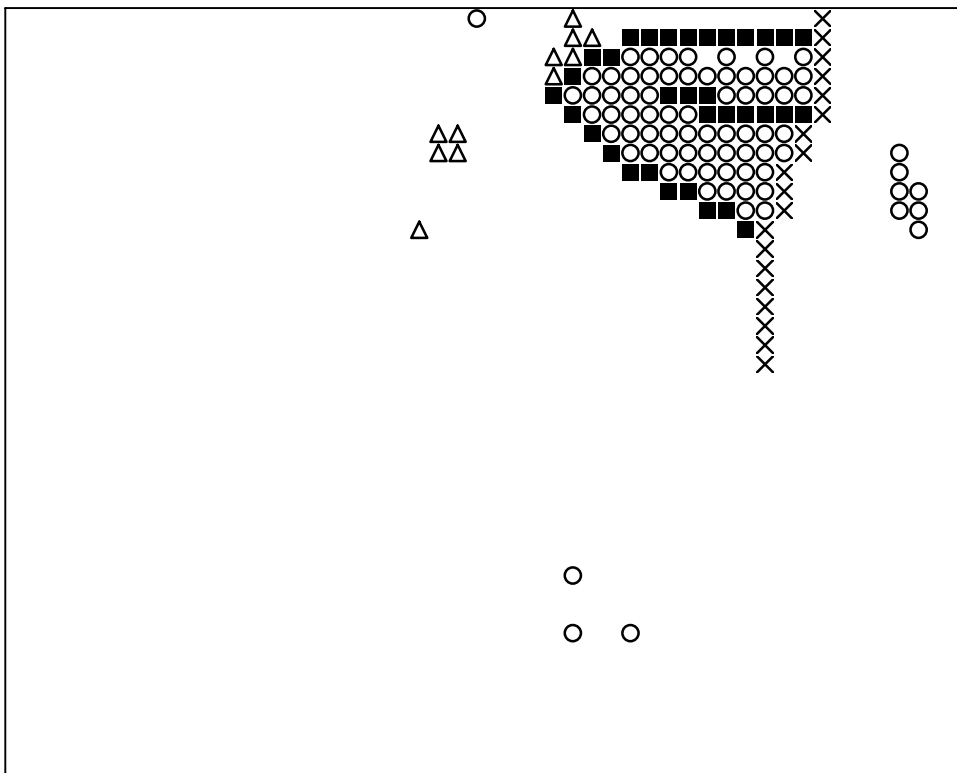


**Frame: 2 x 1 P**

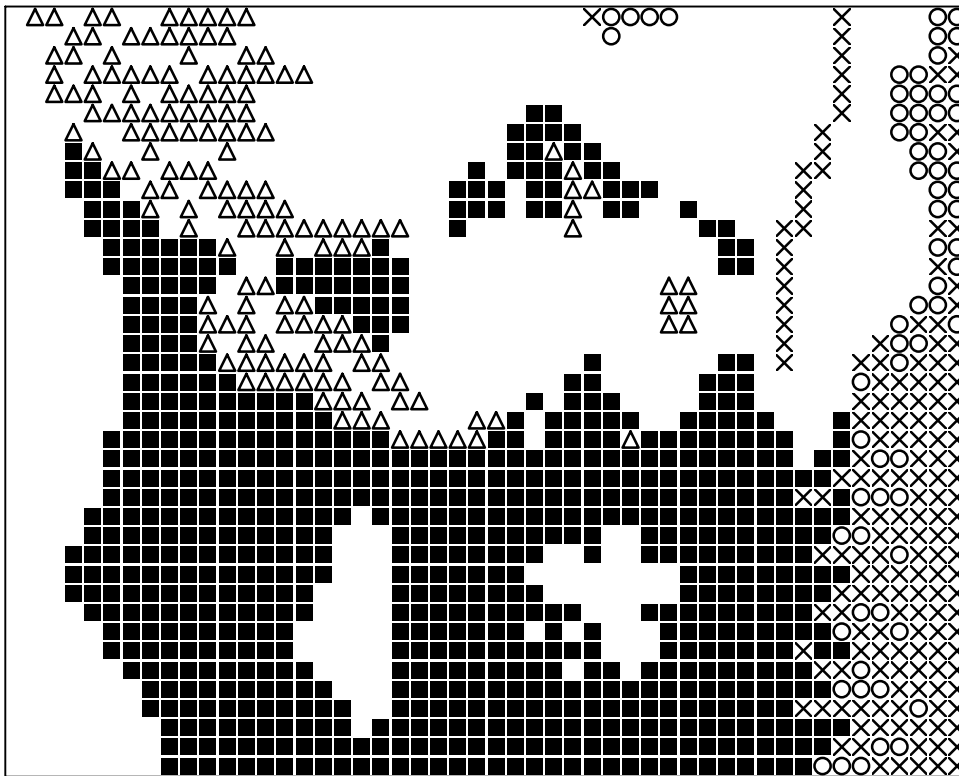




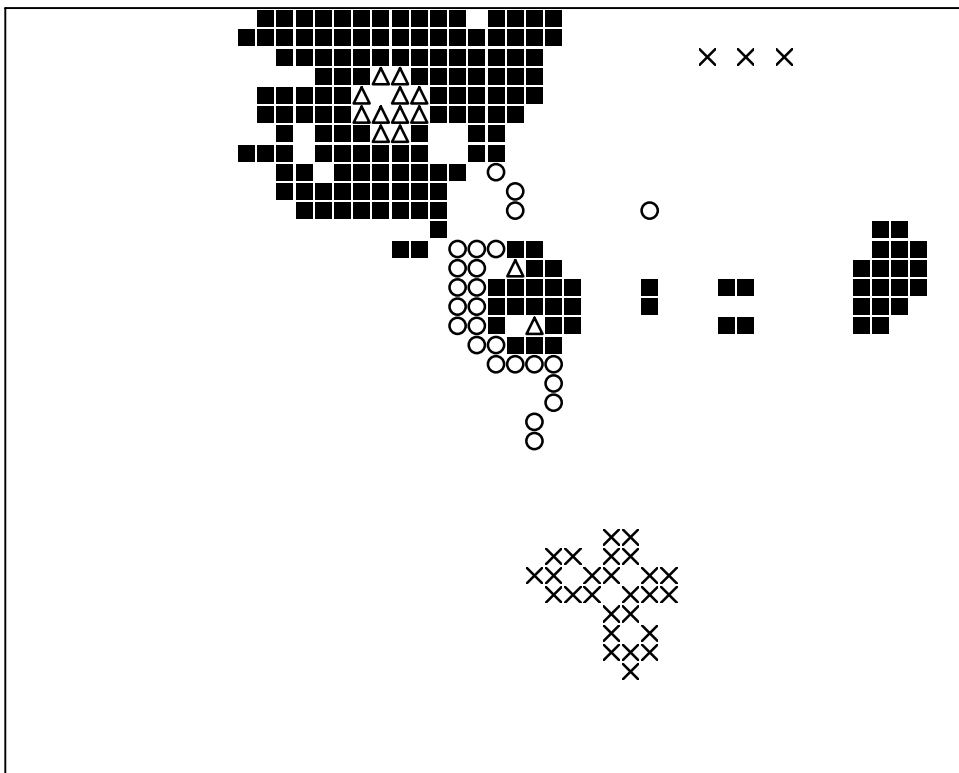
**Basisplatte 1**  
Pixel-Farbe 100 = ■  
Pixel-Farbe 130 = ○  
Pixel-Farbe 155 = ×  
Pixel-Farbe 172 = △



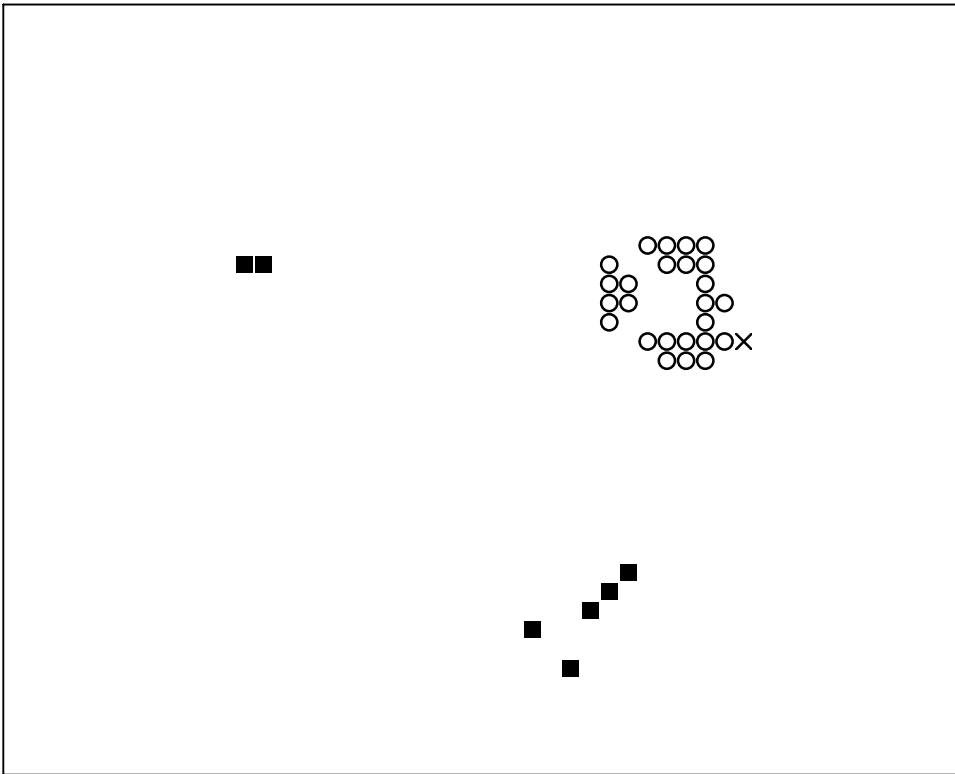
**Basisplatte 1**  
Pixel-Farbe 218 = ■  
Pixel-Farbe 220 = ○  
Pixel-Farbe 271 = ×  
Pixel-Farbe 274 = △



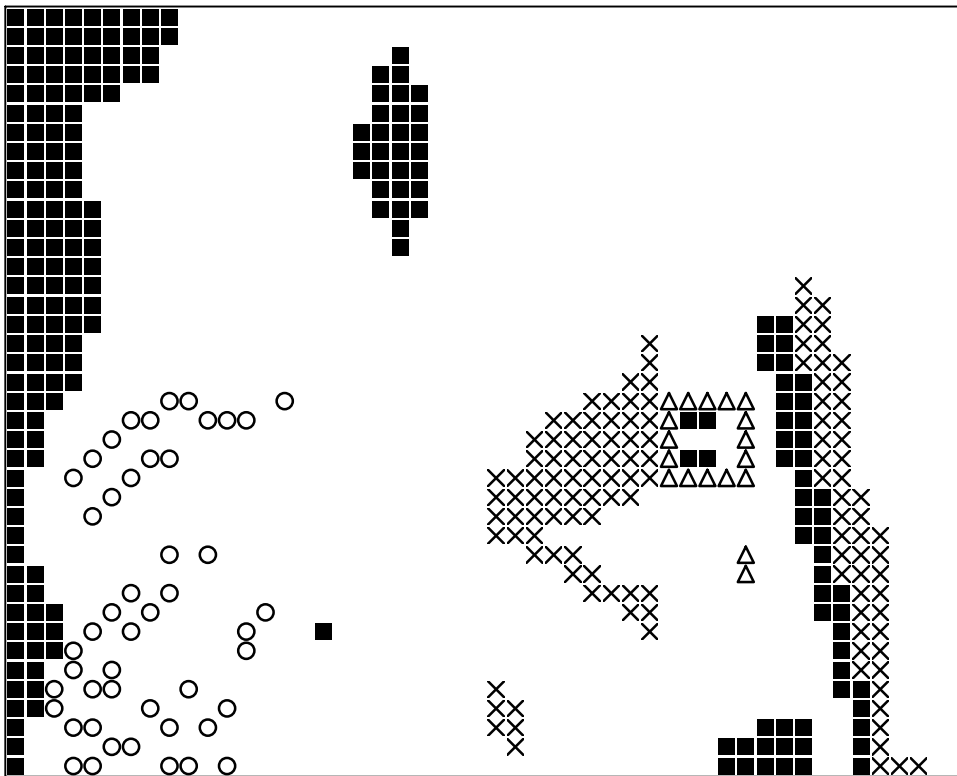
**Basisplatte 1**  
Pixel-Farbe 288 = ■  
Pixel-Farbe 342 = ○  
Pixel-Farbe 343 = ×  
Pixel-Farbe 355 = △



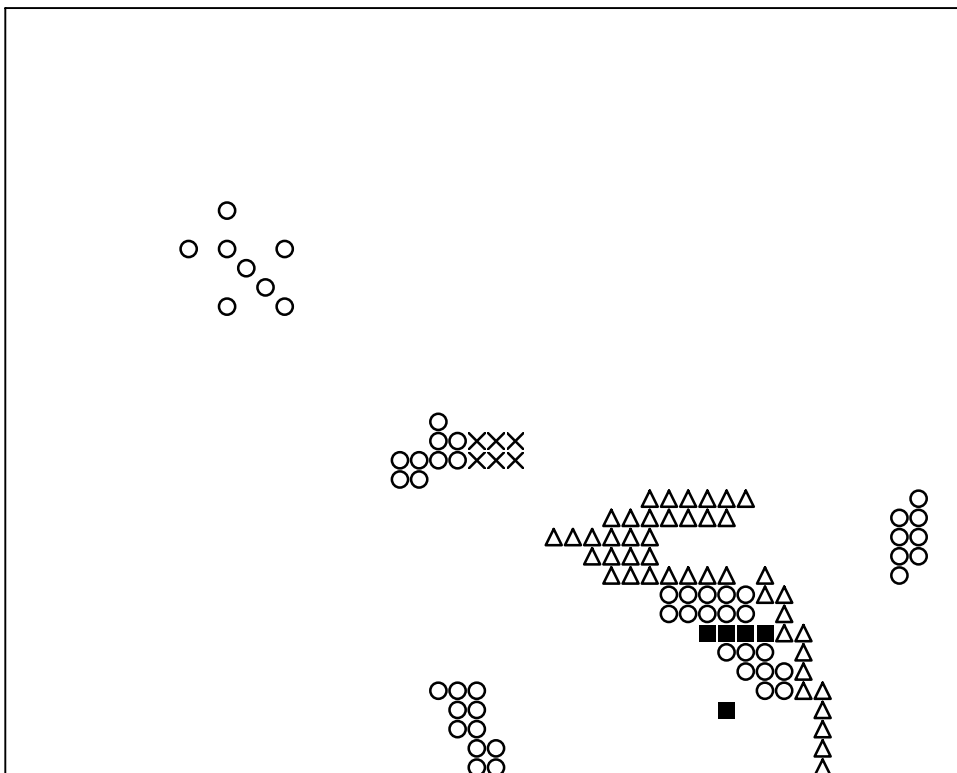
**Basisplatte 1**  
Pixel-Farbe 376 = ■  
Pixel-Farbe 389 = ○  
Pixel-Farbe 391 = ×  
Pixel-Farbe 441 = △



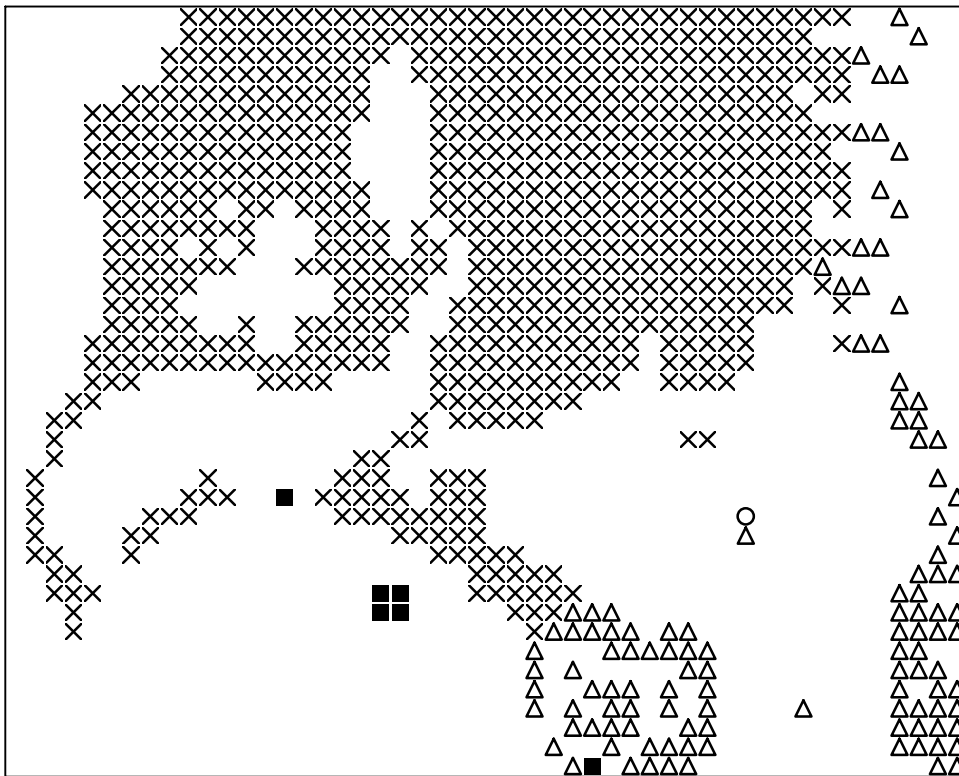
**Basisplatte 1**  
Pixel-Farbe 448 = ■  
Pixel-Farbe 480 = ○  
Pixel-Farbe 528 = ×



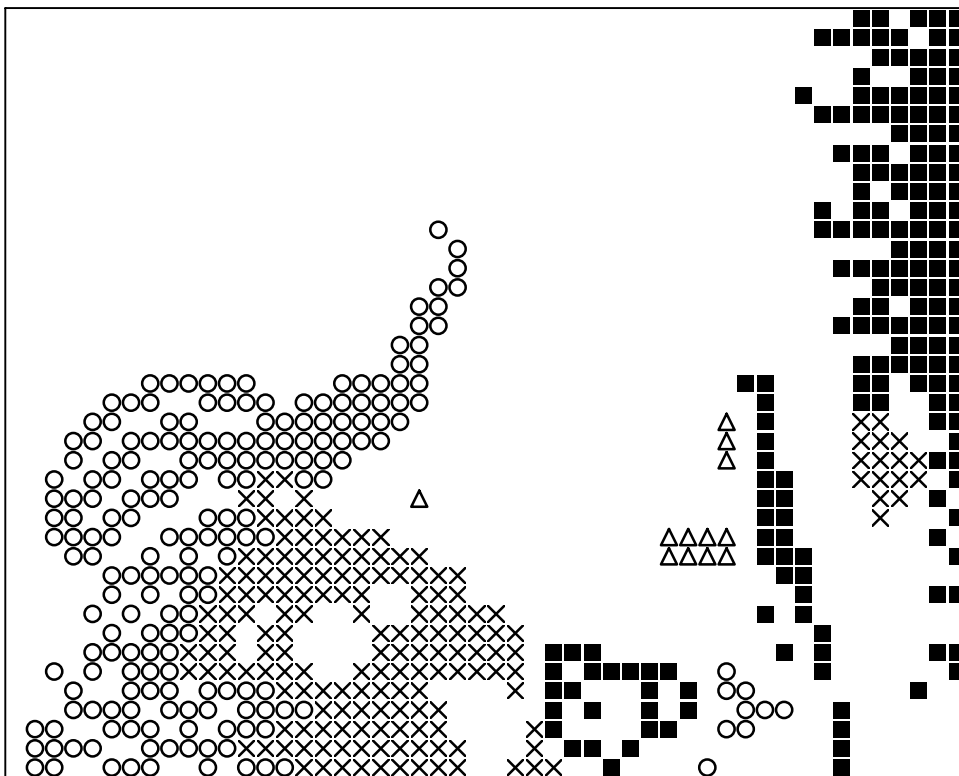
**Basisplatte 2**  
Pixel-Farbe 100 = ■  
Pixel-Farbe 130 = ○  
Pixel-Farbe 155 = ×  
Pixel-Farbe 180 = △



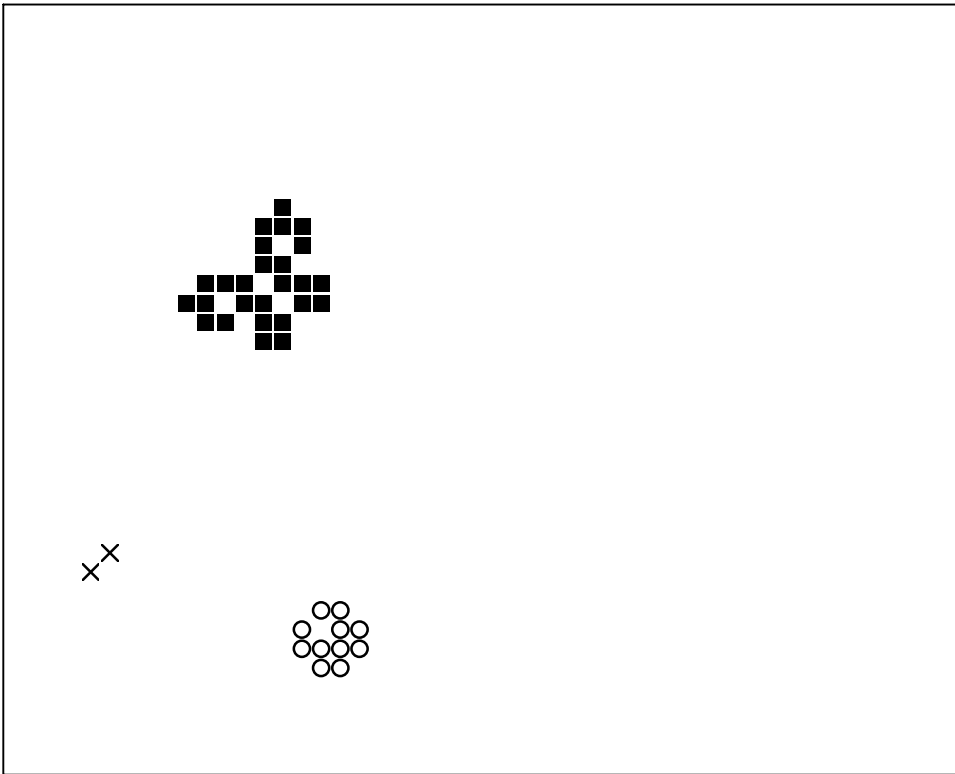
**Basisplatte 2**  
Pixel-Farbe 218 = ■  
Pixel-Farbe 220 = ○  
Pixel-Farbe 257 = ×  
Pixel-Farbe 271 = △



**Basisplatte 2**  
Pixel-Farbe 274 = ■  
Pixel-Farbe 278 = ○  
Pixel-Farbe 288 = ×  
Pixel-Farbe 342 = △



**Basisplatte 2**  
Pixel-Farbe 343 = ■  
Pixel-Farbe 355 = ○  
Pixel-Farbe 376 = ×  
Pixel-Farbe 389 = △



**Basisplatte 2**  
Pixel-Farbe 391 = ■  
Pixel-Farbe 441 = ○  
Pixel-Farbe 448 = ×