

## Teilleiste

www.pixelhobby.com

Anzahl an Basisplatten = 2 (4" x 5")  
Anzahl der Pixel-Vierecke = 41  
Anzahl der Farben = 20

Erforderliche Pixel-Vierecke pro Farbe:

100 = 3  
133 = 2  
171 = 2  
173 = 2  
204 = 1  
231 = 5  
245 = 3  
250 = 1  
288 = 5  
294 = 1  
300 = 1  
303 = 1  
306 = 3  
323 = 1  
342 = 1  
343 = 5  
376 = 1  
389 = 1  
392 = 1  
511 = 1

**Material zu bestellen bei:**

**[www.pixeln.ch](http://www.pixeln.ch)**

**Pixelhobby Online Shop**

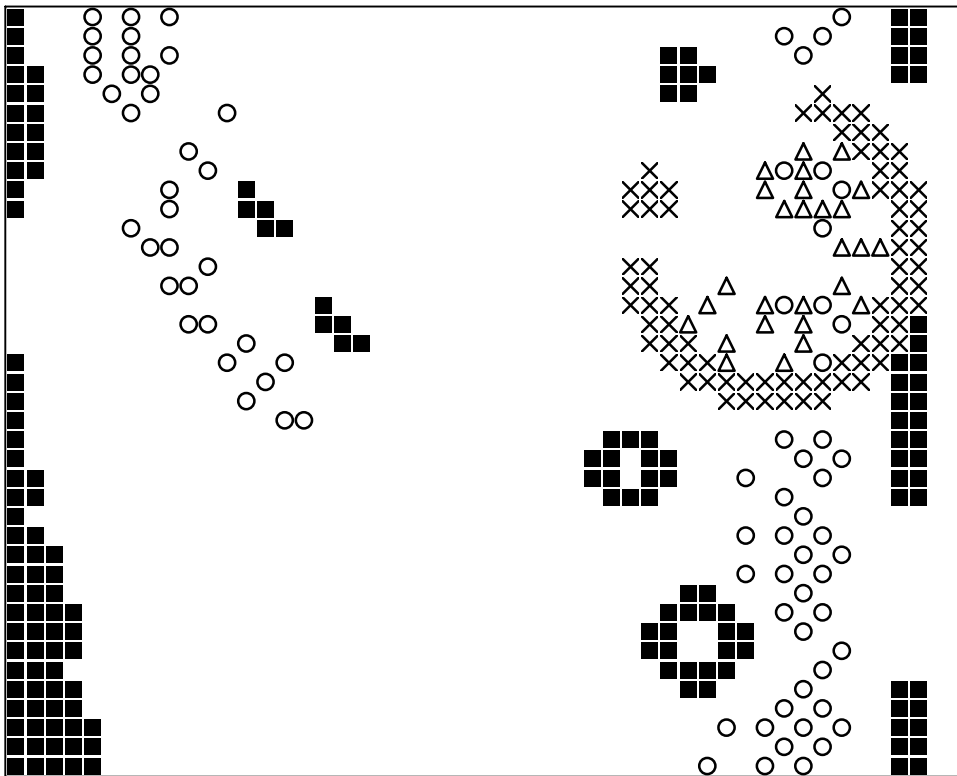
802046\_fietsen  
2017-09-13

Durch internationales Patent geschützt

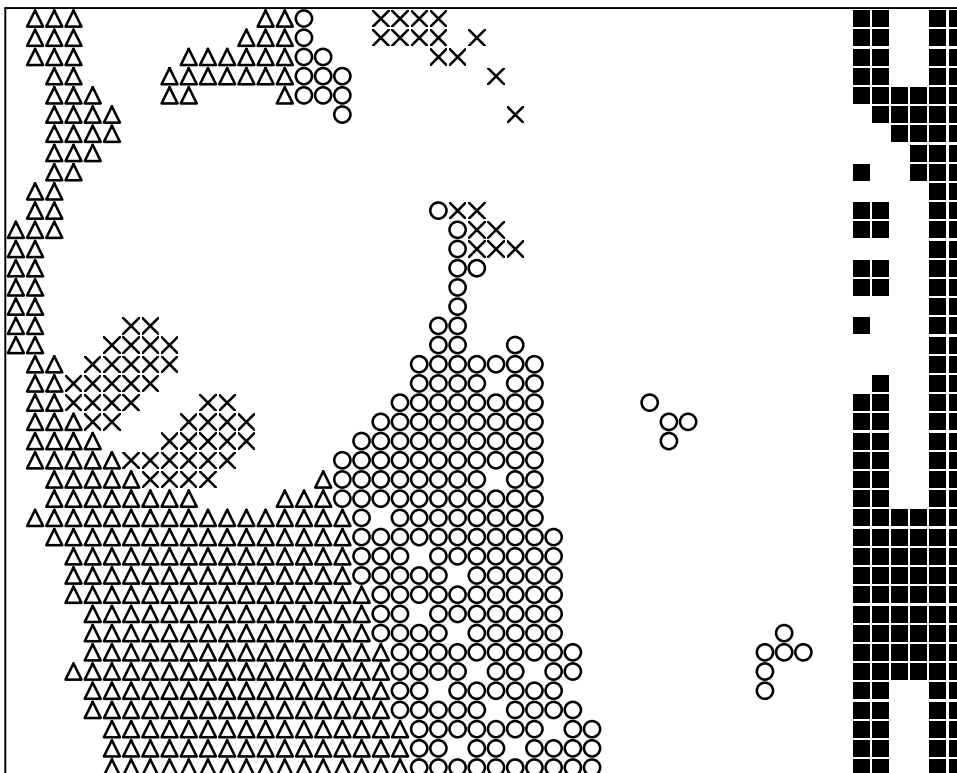


**Frame: 2 x 1 P**

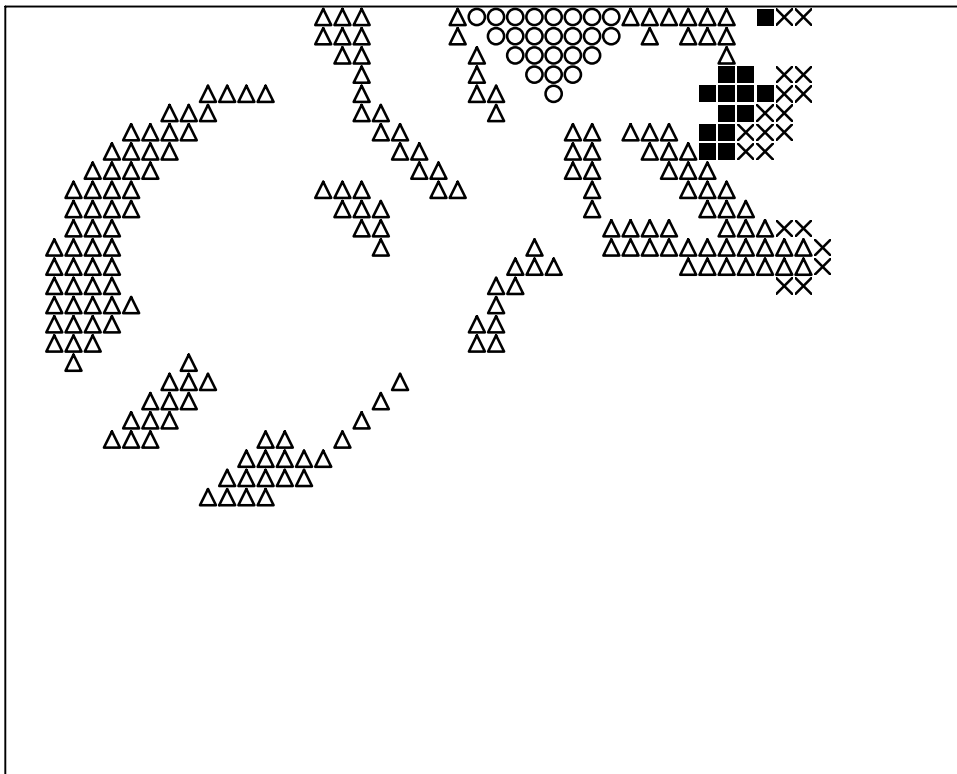




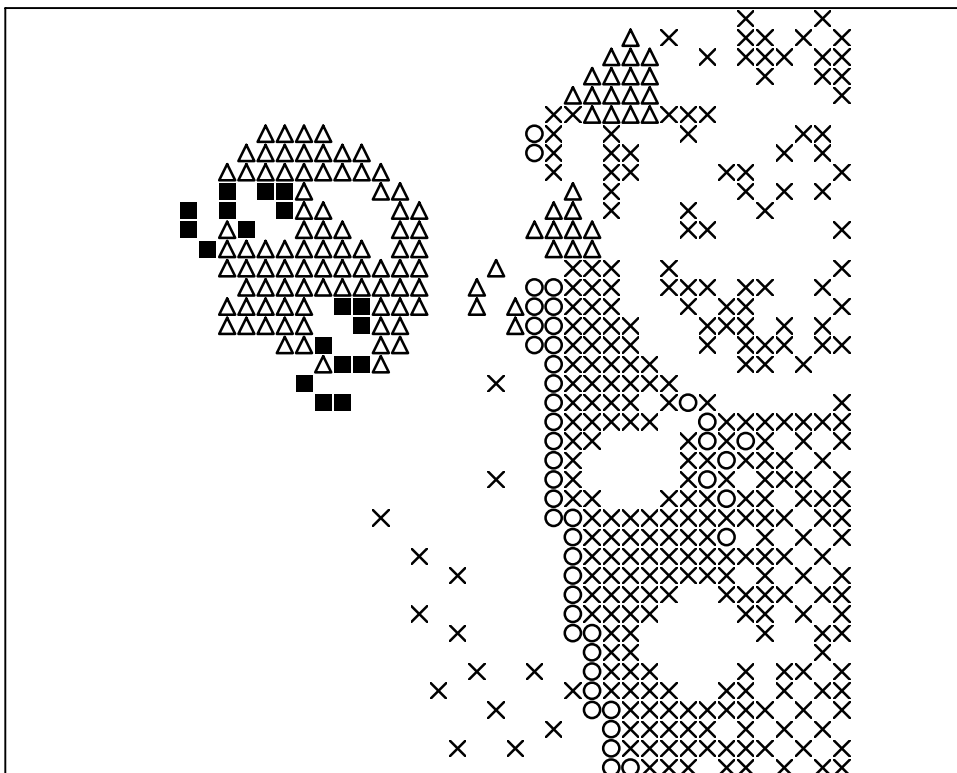
**Basisplatte 1**  
Pixel-Farbe 100 = ■  
Pixel-Farbe 133 = ○  
Pixel-Farbe 171 = ×  
Pixel-Farbe 173 = △



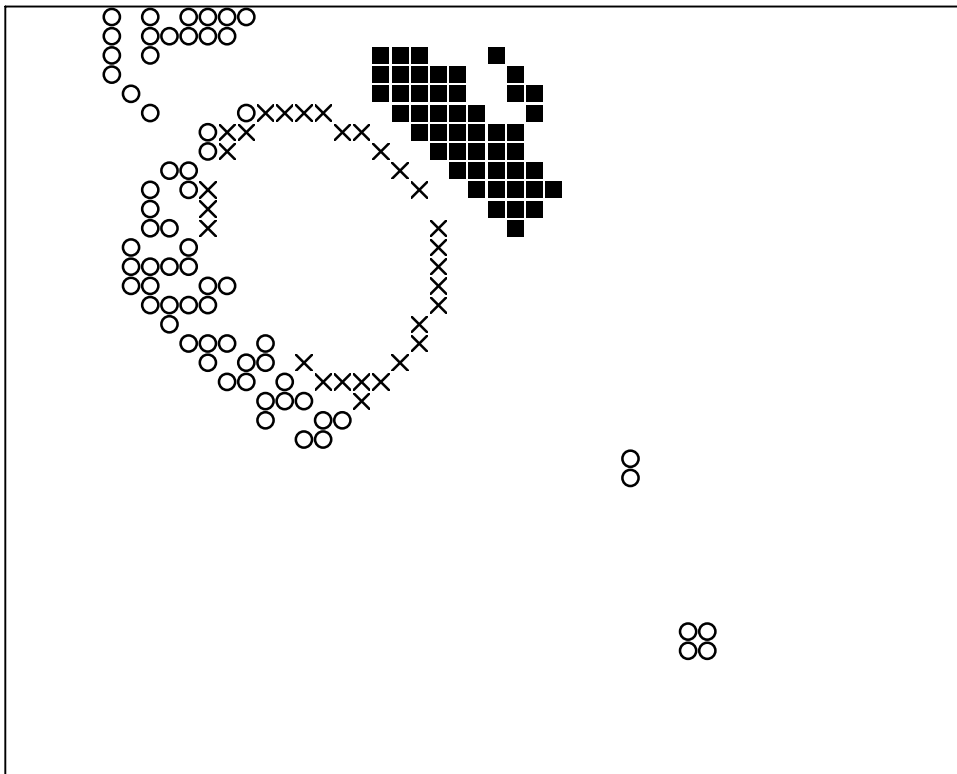
**Basisplatte 1**  
Pixel-Farbe 231 = ■  
Pixel-Farbe 245 = ○  
Pixel-Farbe 250 = ×  
Pixel-Farbe 288 = △



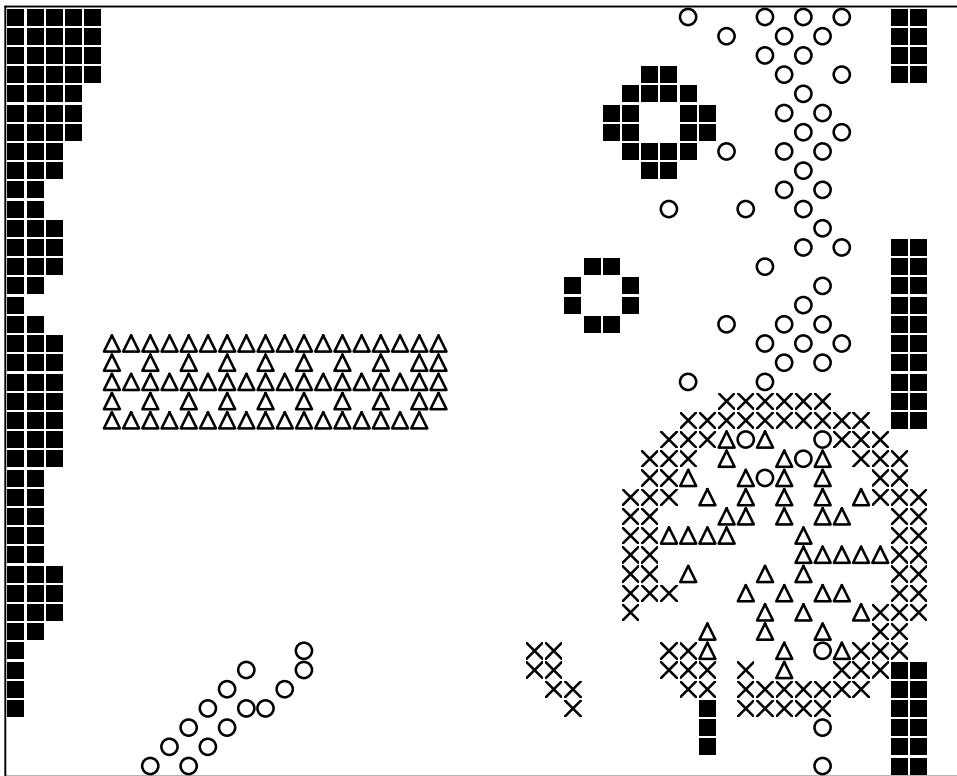
**Basisplatte 1**  
Pixel-Farbe 294 = ■  
Pixel-Farbe 300 = ○  
Pixel-Farbe 303 = ×  
Pixel-Farbe 306 = △



**Basisplatte 1**  
Pixel-Farbe 323 = ■  
Pixel-Farbe 342 = ○  
Pixel-Farbe 343 = ×  
Pixel-Farbe 376 = △



**Basisplatte 1**  
Pixel-Farbe 389 = ■  
Pixel-Farbe 392 = ○  
Pixel-Farbe 511 = ×



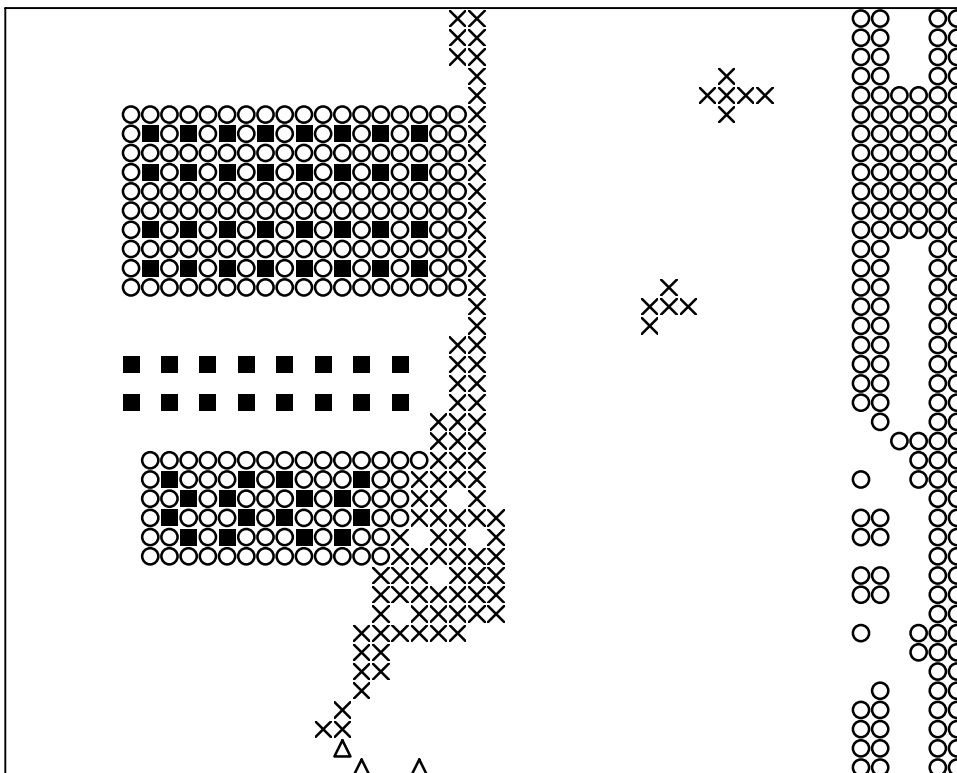
**Basisplatte 2**

Pixel-Farbe 100 = ■

Pixel-Farbe 133 = ○

Pixel-Farbe 171 = ×

Pixel-Farbe 173 = △



**Basisplatte 2**

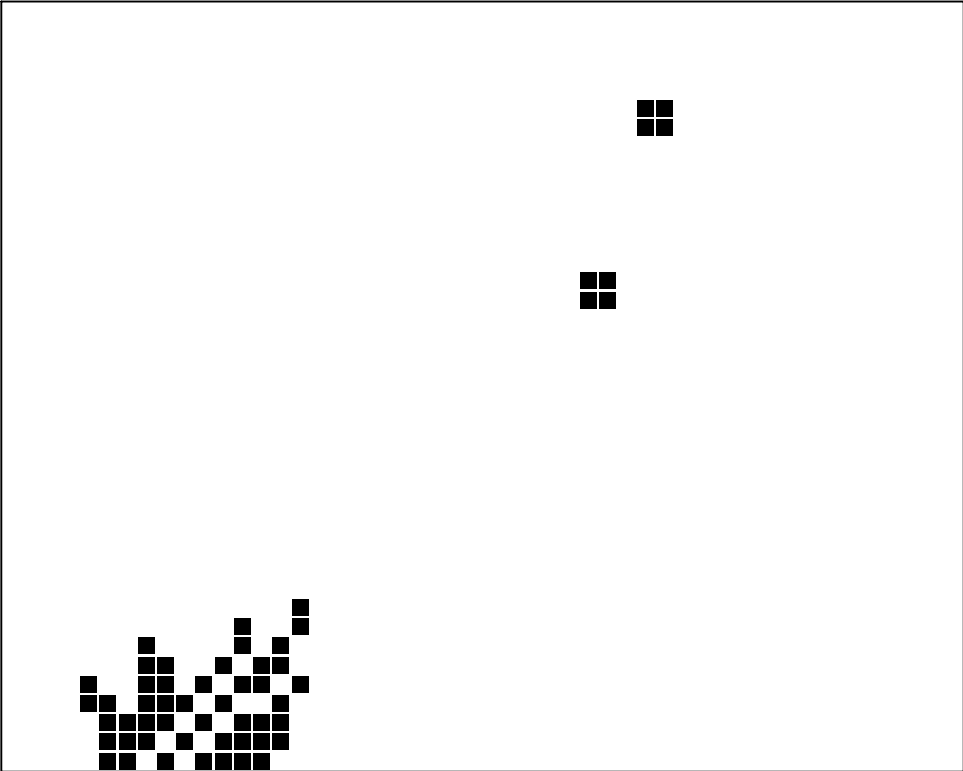
Pixel-Farbe 204 = ■

Pixel-Farbe 231 = ○

Pixel-Farbe 245 = ×

Pixel-Farbe 250 = △





**Basisplatte 2**  
**Pixel-Farbe 392 = ■**