

Teileliste

www.pixelhobby.com

Anzahl an Basisplatten = 1 (4" x 5")
Anzahl der Pixel-Vierecke = 24
Anzahl der Farben = 14

Erforderliche Pixel-Vierecke pro Farbe:

100 = 1
116 = 6
182 = 4
198 = 2
224 = 1
294 = 1
306 = 1
309 = 1
342 = 1
343 = 1
389 = 2
391 = 1
392 = 1
447 = 1

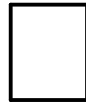
Material zu bestellen bei:

www.pixeln.ch

Pixelhobby Online Shop

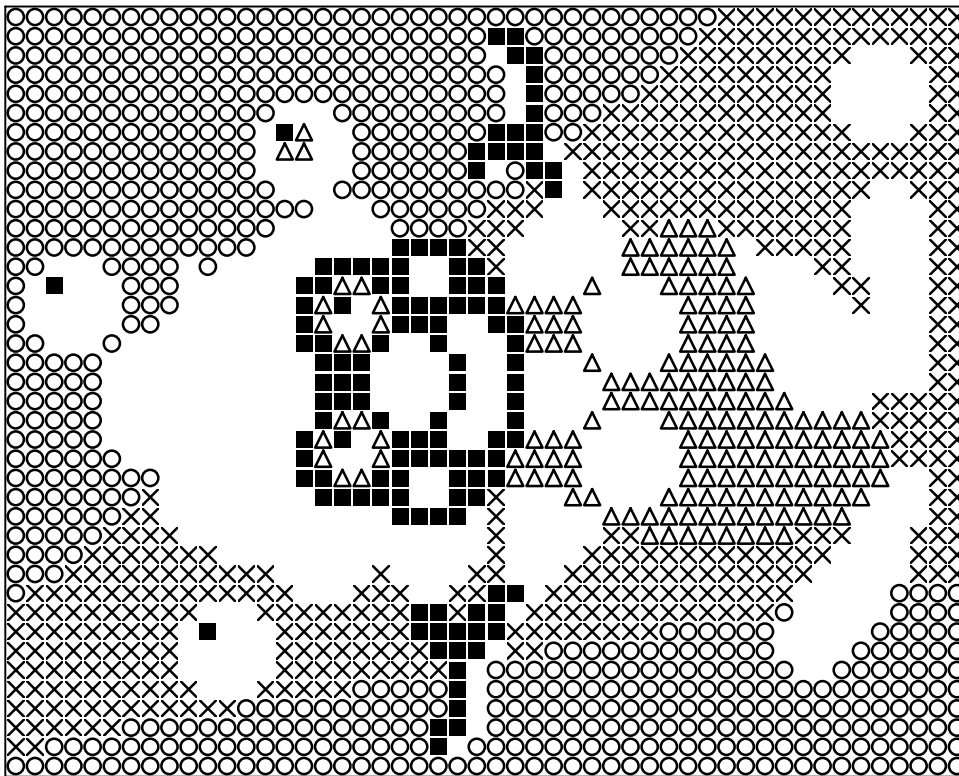
801396_clownjongleren-sylvia
2017-06-23

Durch internationales Patent geschützt

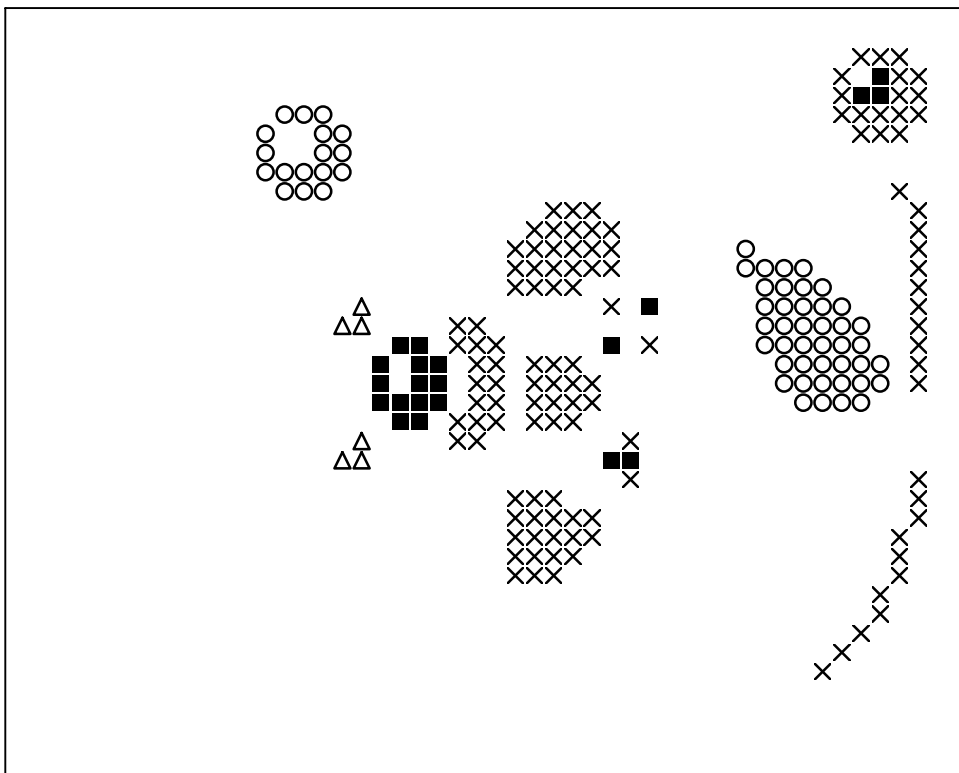


Frame: 1 x 1 P

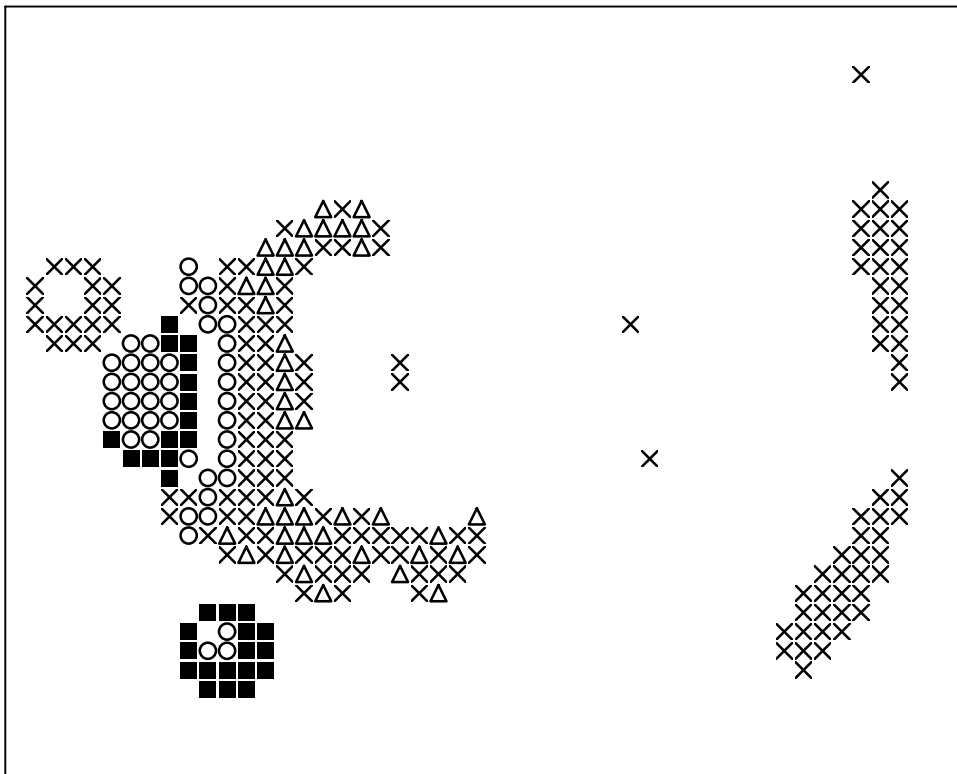




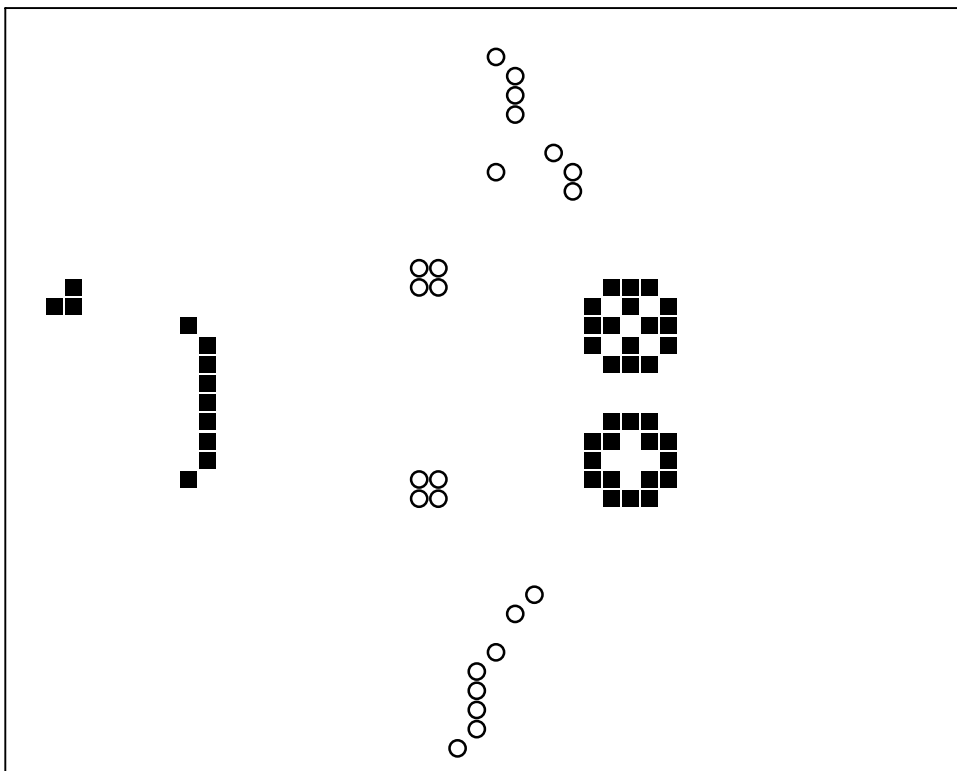
Basisplatte 1
Pixel-Farbe 100 = ■
Pixel-Farbe 116 = ○
Pixel-Farbe 182 = ×
Pixel-Farbe 198 = △



Basisplatte 1
Pixel-Farbe 224 = ■
Pixel-Farbe 294 = ○
Pixel-Farbe 306 = ×
Pixel-Farbe 309 = △



Basisplatte 1
Pixel-Farbe 342 = ■
Pixel-Farbe 343 = ○
Pixel-Farbe 389 = ×
Pixel-Farbe 391 = △



Basisplatte 1
Pixel-Farbe 392 = ■
Pixel-Farbe 447 = ○