

Teilleiste

www.pixelhobby.com

Anzahl an Basisplatten = 1 (4" x 5")
Anzahl der Pixel-Vierecke = 22
Anzahl der Farben = 14

Erforderliche Pixel-Vierecke pro Farbe:

100 = 1
130 = 1
155 = 1
245 = 1
271 = 1
284 = 1
288 = 2
300 = 1
306 = 1
343 = 1
376 = 2
389 = 1
392 = 1
404 = 7

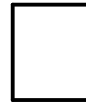
Material zu bestellen bei:

www.pixeln.ch

Pixelhobby Online Shop

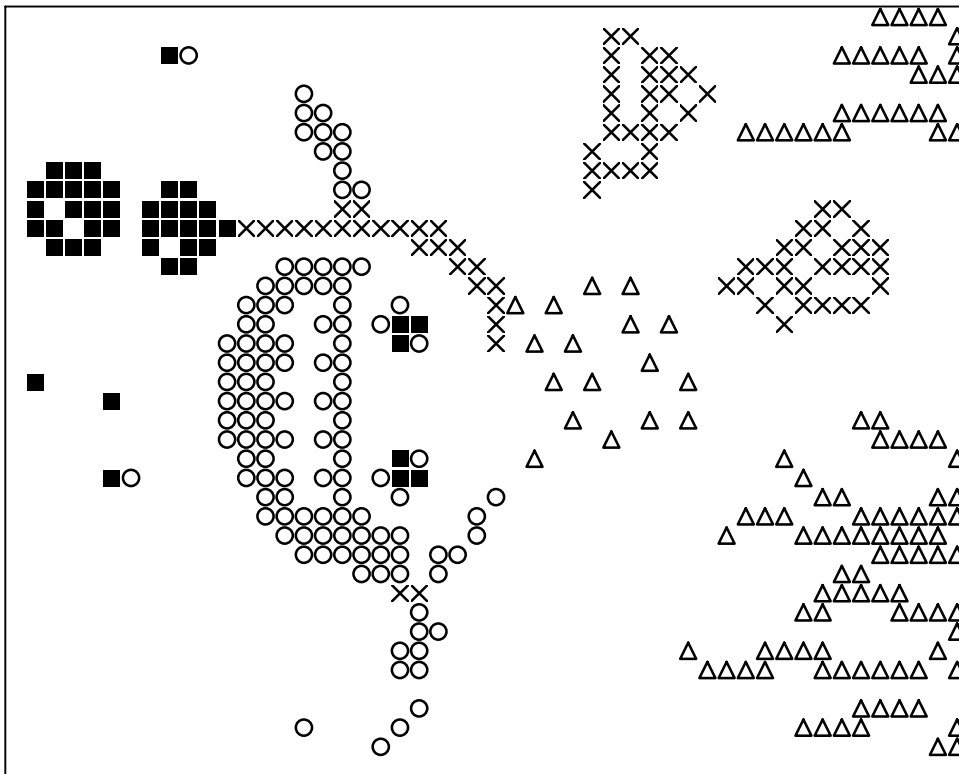
801384_ouderwater
2017-06-23

Durch internationals Patent geschützt

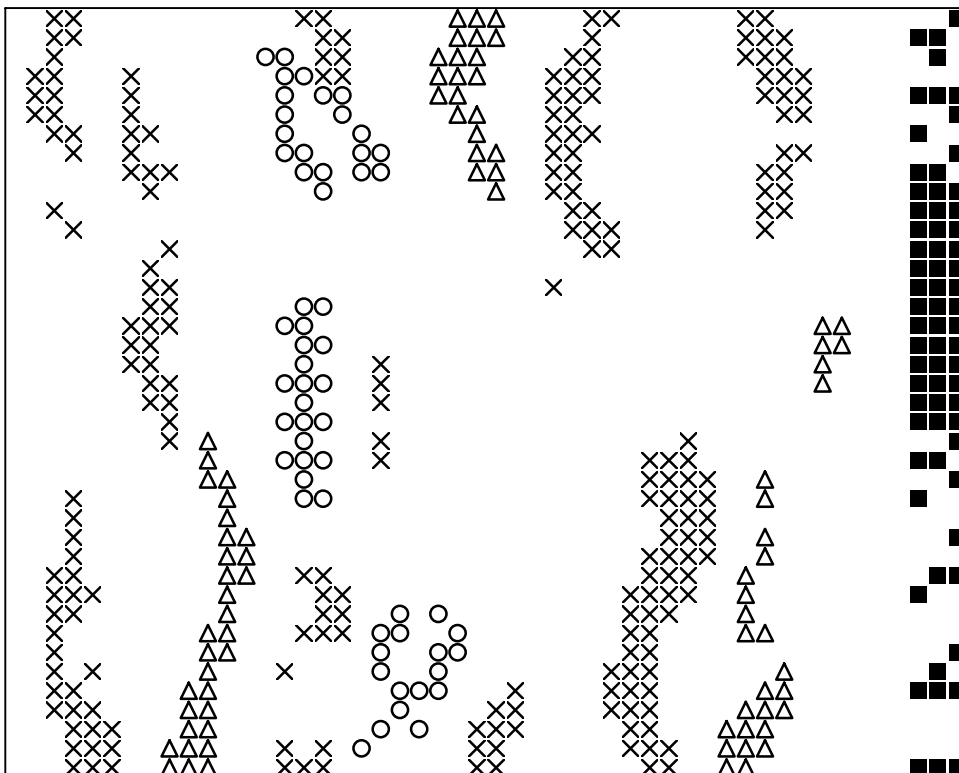


Frame: 1 x 1 P

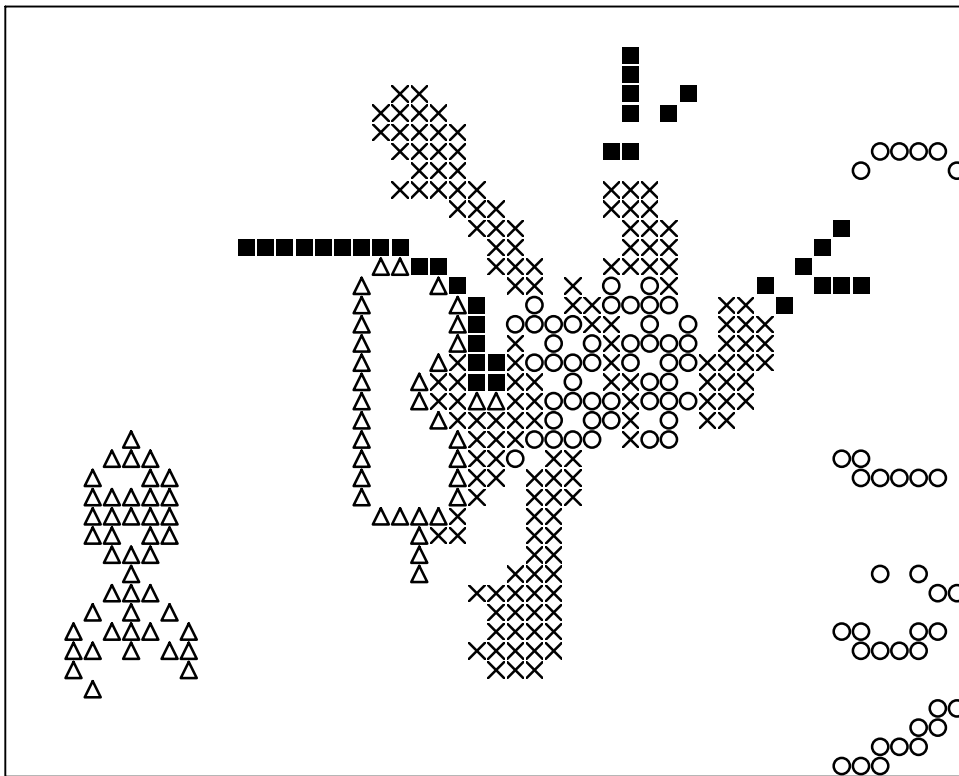




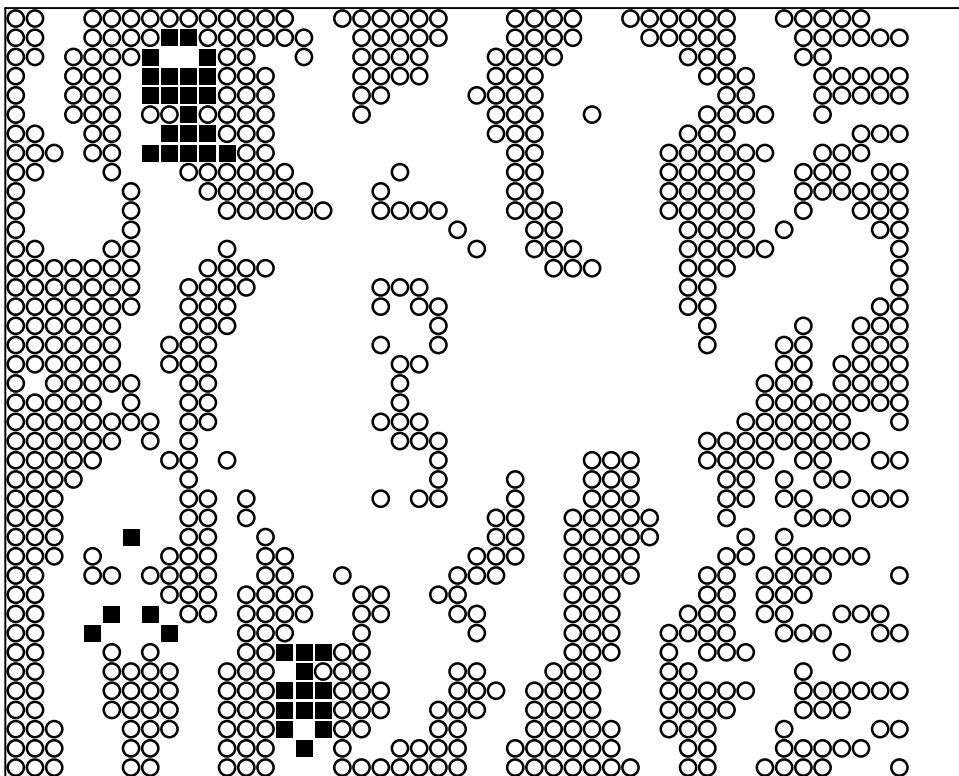
Basisplatte 1
Pixel-Farbe 100 = ■
Pixel-Farbe 130 = ○
Pixel-Farbe 155 = ×
Pixel-Farbe 245 = △



Basisplatte 1
Pixel-Farbe 271 = ■
Pixel-Farbe 284 = ○
Pixel-Farbe 288 = ×
Pixel-Farbe 300 = △



Basisplatte 1
Pixel-Farbe 306 = ■
Pixel-Farbe 343 = ○
Pixel-Farbe 376 = ×
Pixel-Farbe 389 = △



Basisplatte 1
Pixel-Farbe 392 = ■
Pixel-Farbe 404 = ○