

Teilleiste

www.pixelhobby.com

Anzahl an Basisplatten = 1 (4" x 5")
Anzahl der Pixel-Vierecke = 25
Anzahl der Farben = 17

Erforderliche Pixel-Vierecke pro Farbe:

171 = 1
177 = 2
274 = 1
277 = 1
278 = 1
288 = 3
342 = 1
343 = 1
353 = 2
366 = 1
376 = 2
430 = 1
458 = 1
496 = 1
536 = 1
552 = 3
553 = 2

Material zu bestellen bei:

www.pixeln.ch

Pixelhobby Online Shop

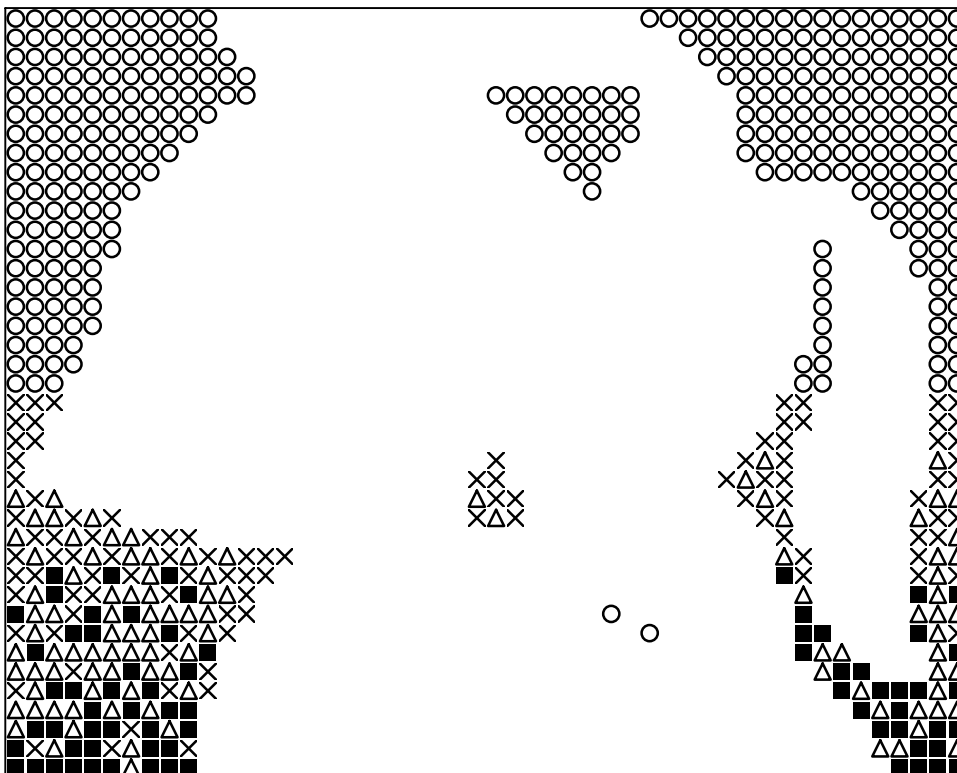
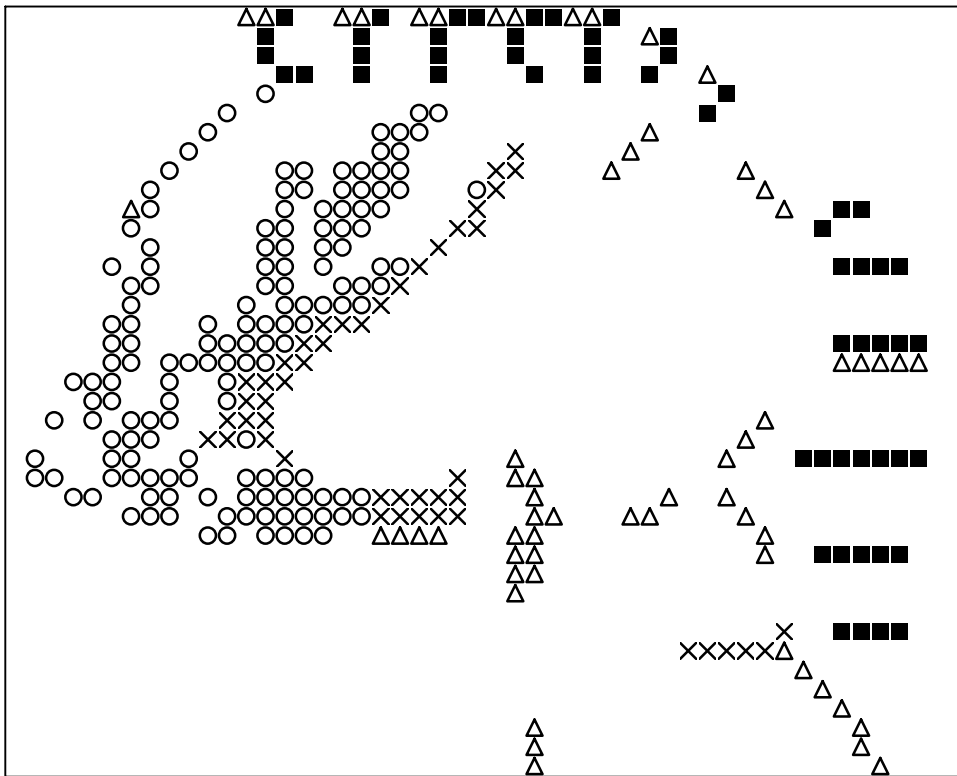
801379_hondje-met-baasje
2017-06-23

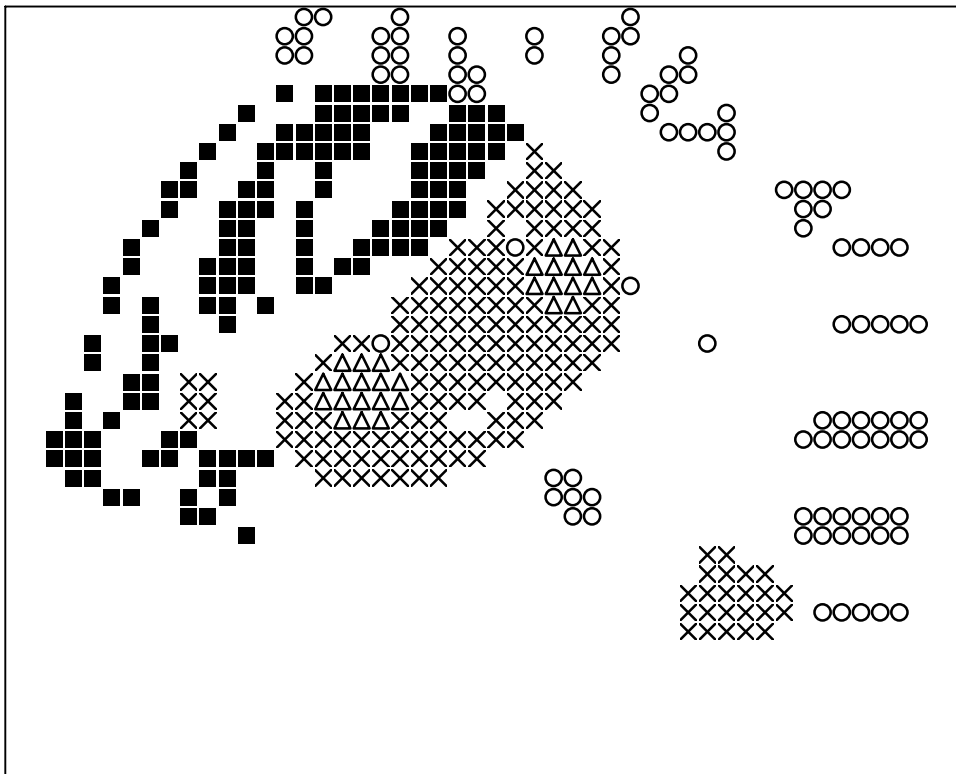
Durch internationals Patent geschützt



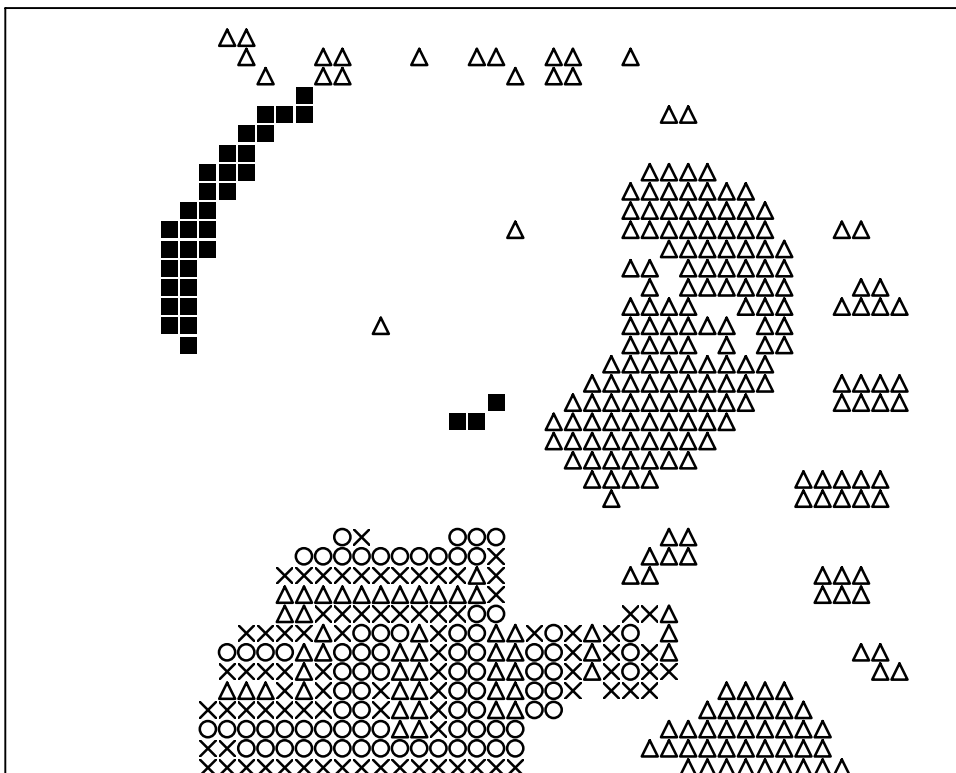
Frame: 1 x 1 L



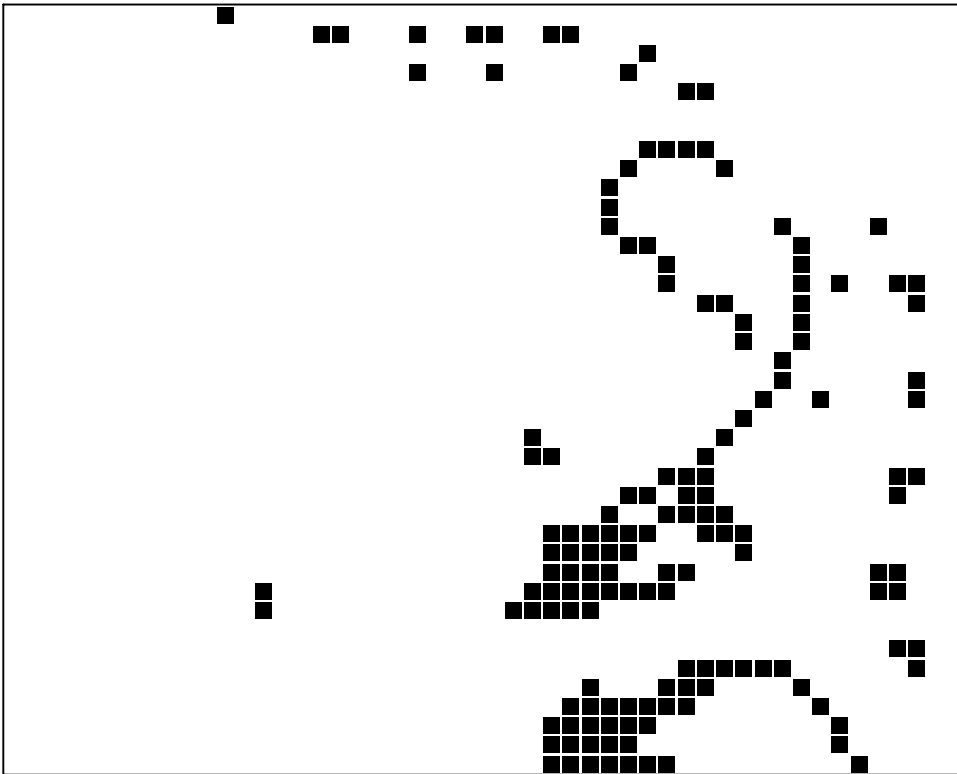




Basisplatte 1
Pixel-Farbe 353 = ■
Pixel-Farbe 366 = ○
Pixel-Farbe 376 = ×
Pixel-Farbe 430 = △



Basisplatte 1
Pixel-Farbe 458 = ■
Pixel-Farbe 496 = ○
Pixel-Farbe 536 = ×
Pixel-Farbe 552 = △



Basisplatte 1
Pixel-Farbe 553 = ■