

Teilleiste

www.pixelhobby.com

Anzahl an Basisplatten = 1 (4" x 5")
Anzahl der Pixel-Vierecke= 35
Anzahl der Farben = 32

Erforderliche Pixel-Vierecke pro Farbe:

114 = 1
126 = 1
167 = 1
178 = 1
179 = 1
180 = 1
187 = 1
204 = 1
239 = 2
252 = 1
270 = 1
271 = 2
296 = 1
307 = 1
317 = 1
342 = 1
365 = 1
371 = 1
376 = 2
388 = 1
407 = 1
412 = 1
414 = 1
425 = 1
441 = 1
461 = 1
470 = 1
481 = 1
483 = 1
541 = 1
543 = 1
552 = 1

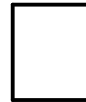
Material zu bestellen bei:

www.pixeln.ch

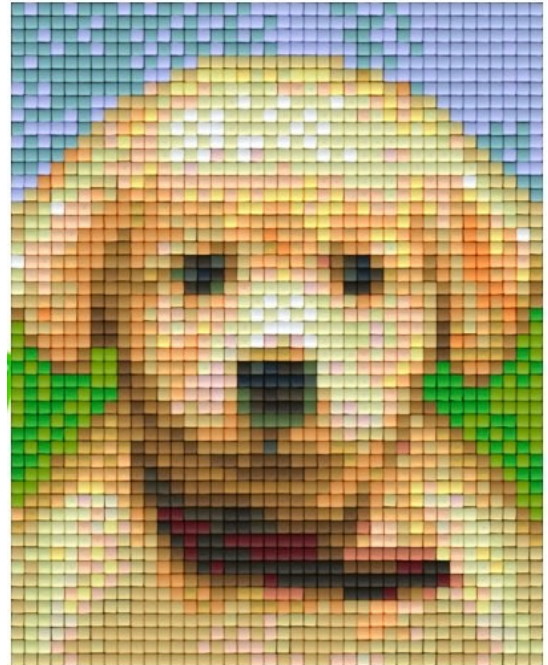
Pixelhobby Online Shop

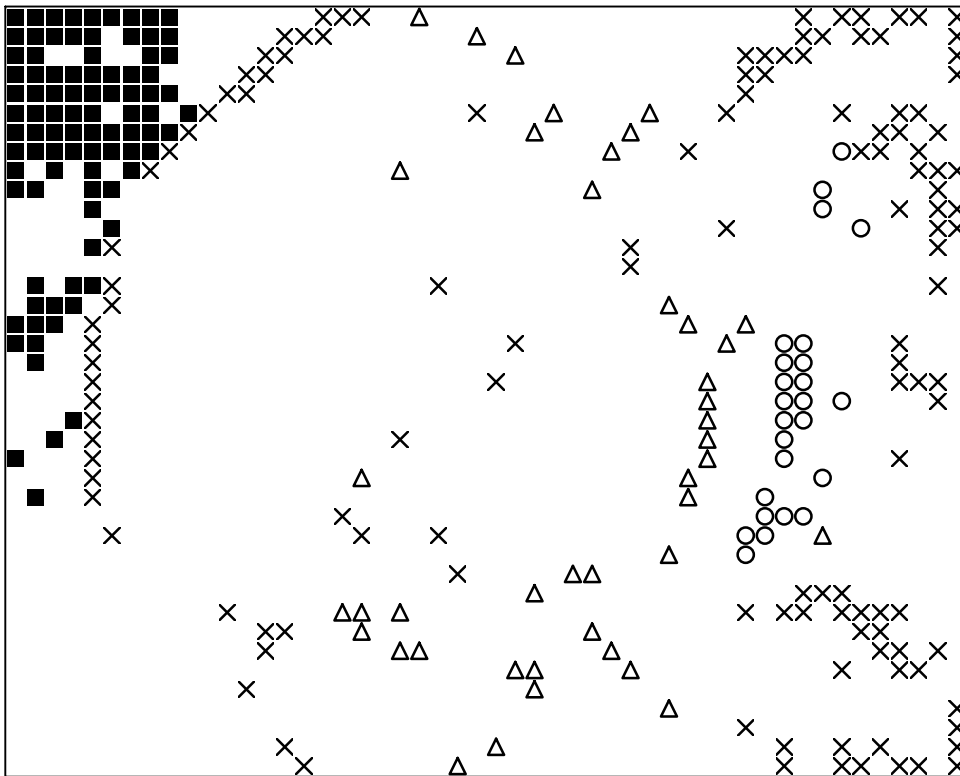
801322_puppy
2017-06-23

Durch internationals Patent geschützt

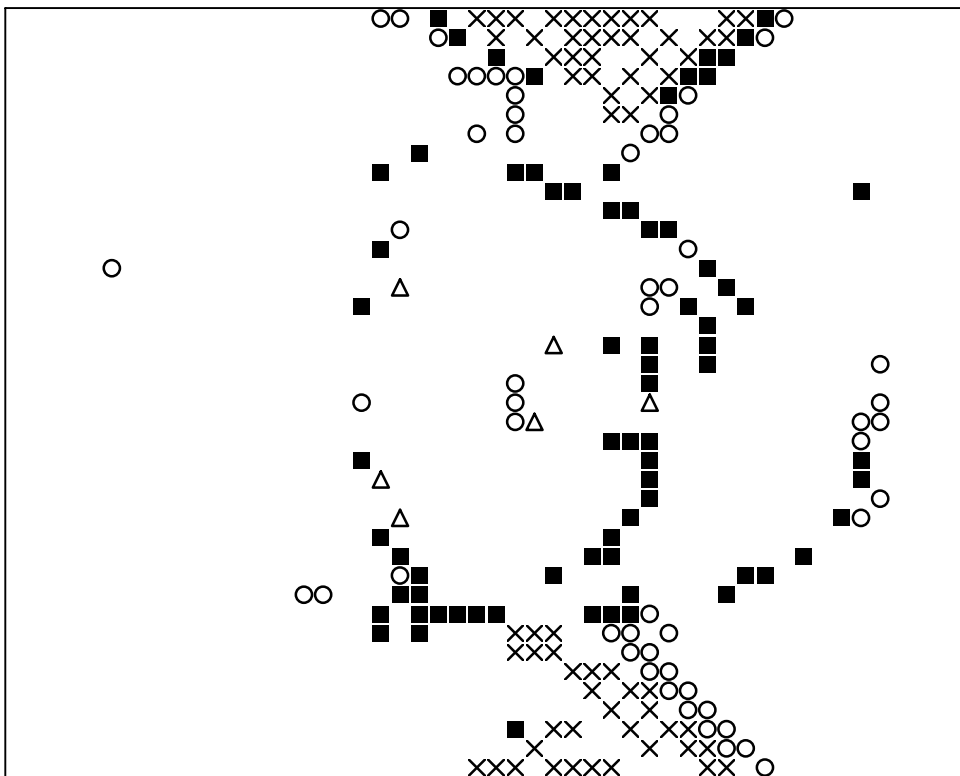


Frame: 1 x 1 P

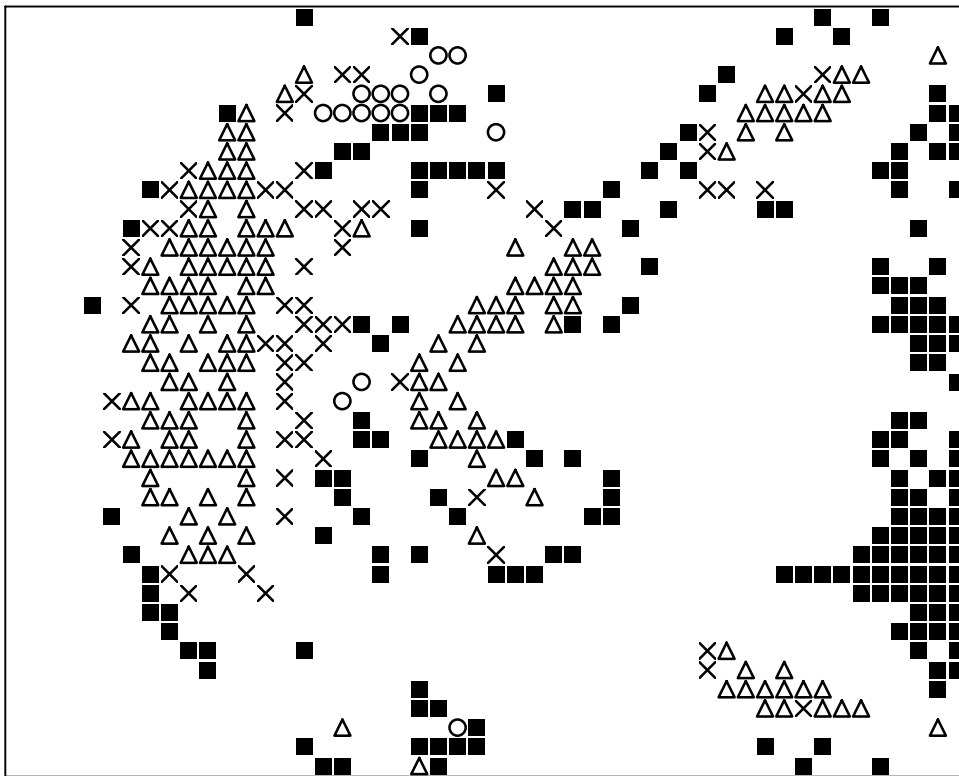




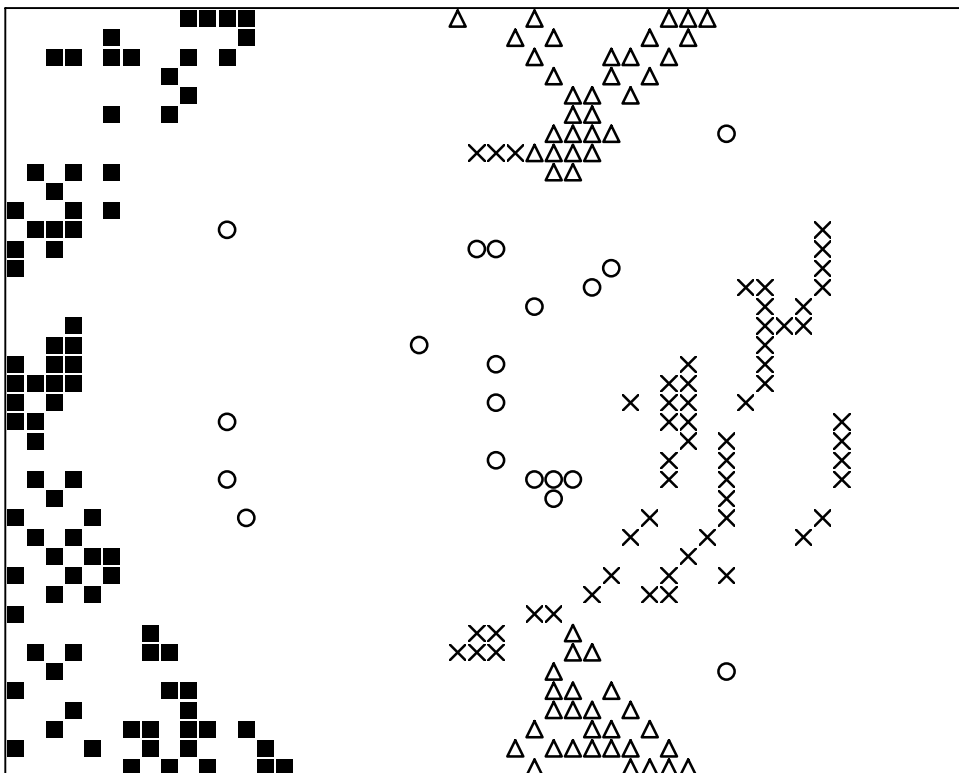
Basisplatte 1
Pixel-Farbe 114 = ■
Pixel-Farbe 126 = ○
Pixel-Farbe 167 = ×
Pixel-Farbe 178 = △



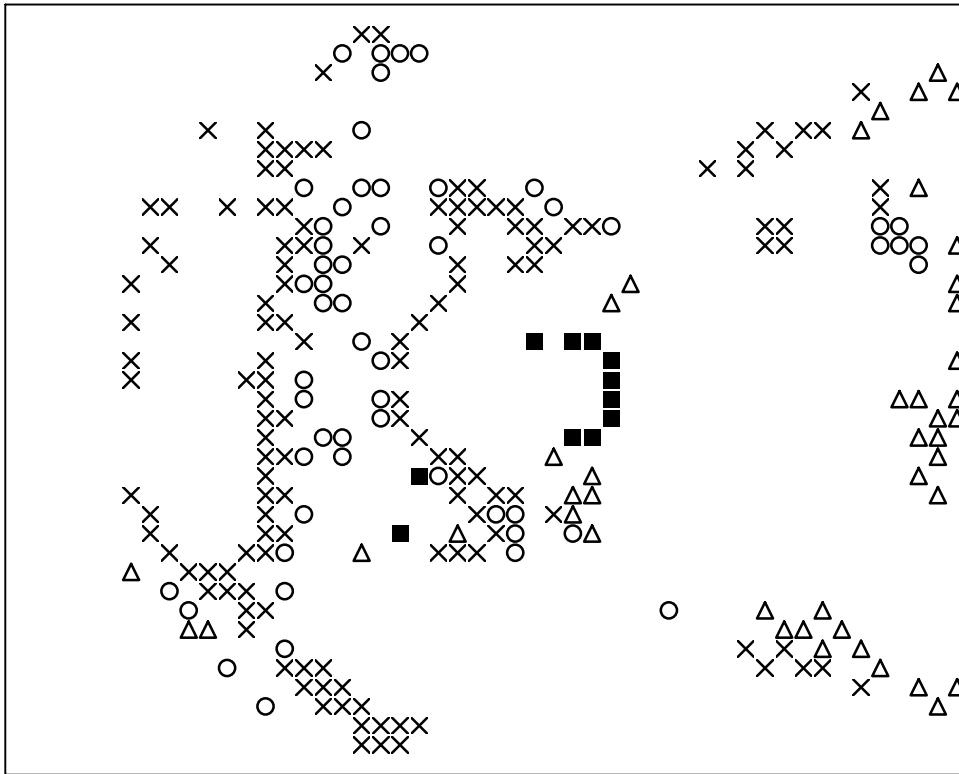
Basisplatte 1
Pixel-Farbe 179 = ■
Pixel-Farbe 180 = ○
Pixel-Farbe 187 = ×
Pixel-Farbe 204 = △



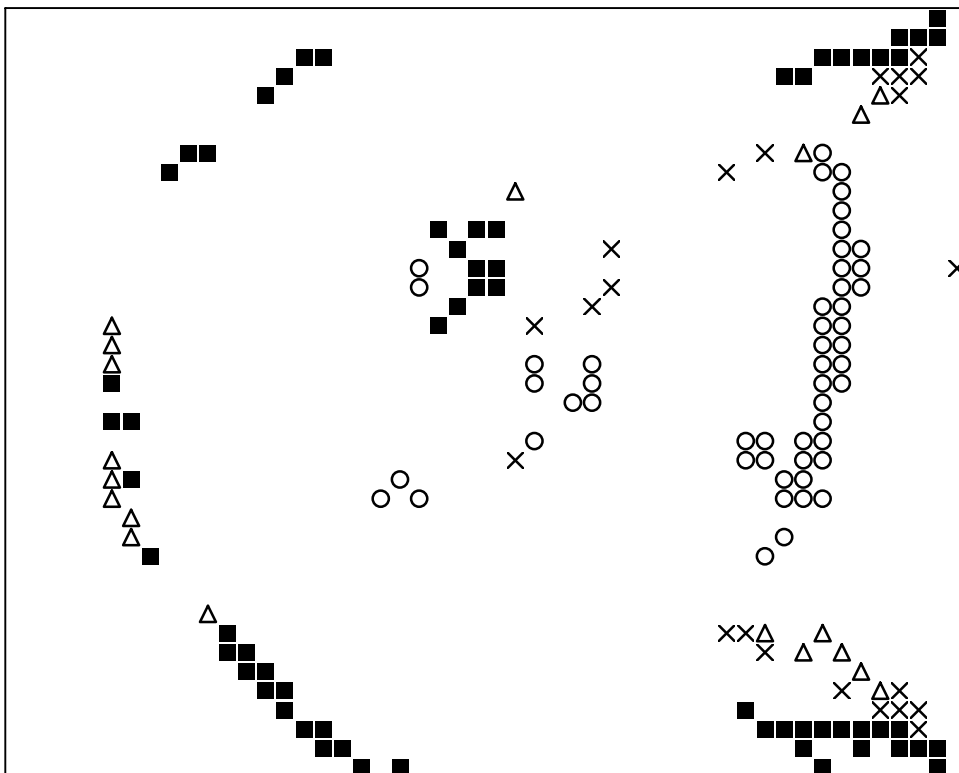
Basisplatte 1
Pixel-Farbe 239 = ■
Pixel-Farbe 252 = ○
Pixel-Farbe 270 = ×
Pixel-Farbe 271 = △



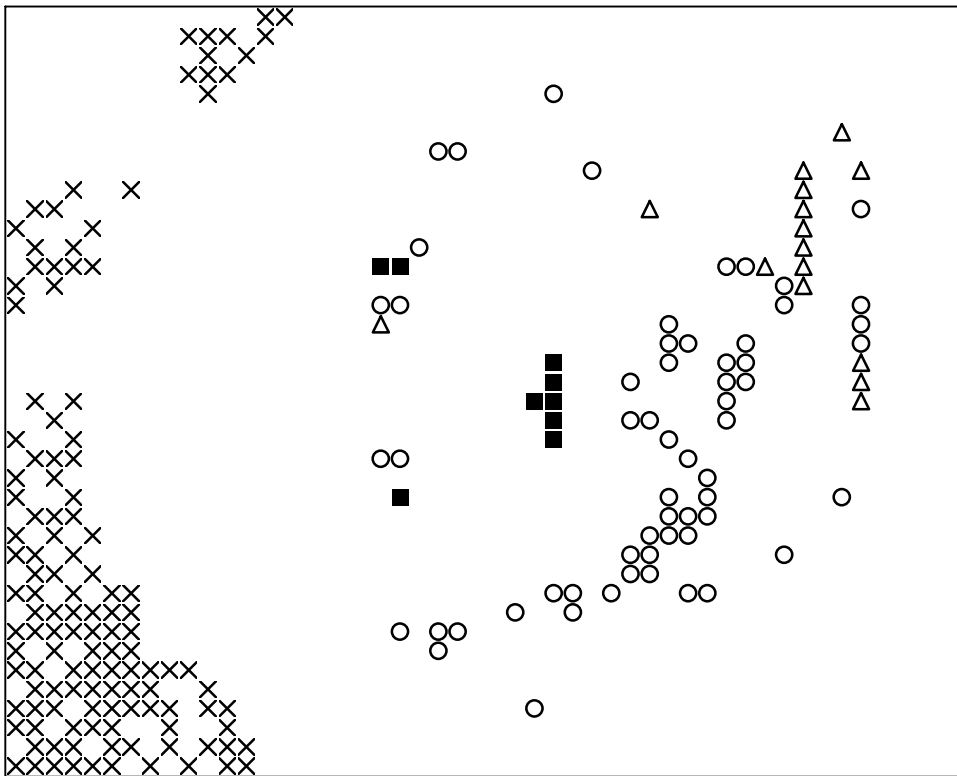
Basisplatte 1
Pixel-Farbe 296 = ■
Pixel-Farbe 307 = ○
Pixel-Farbe 317 = ×
Pixel-Farbe 342 = △



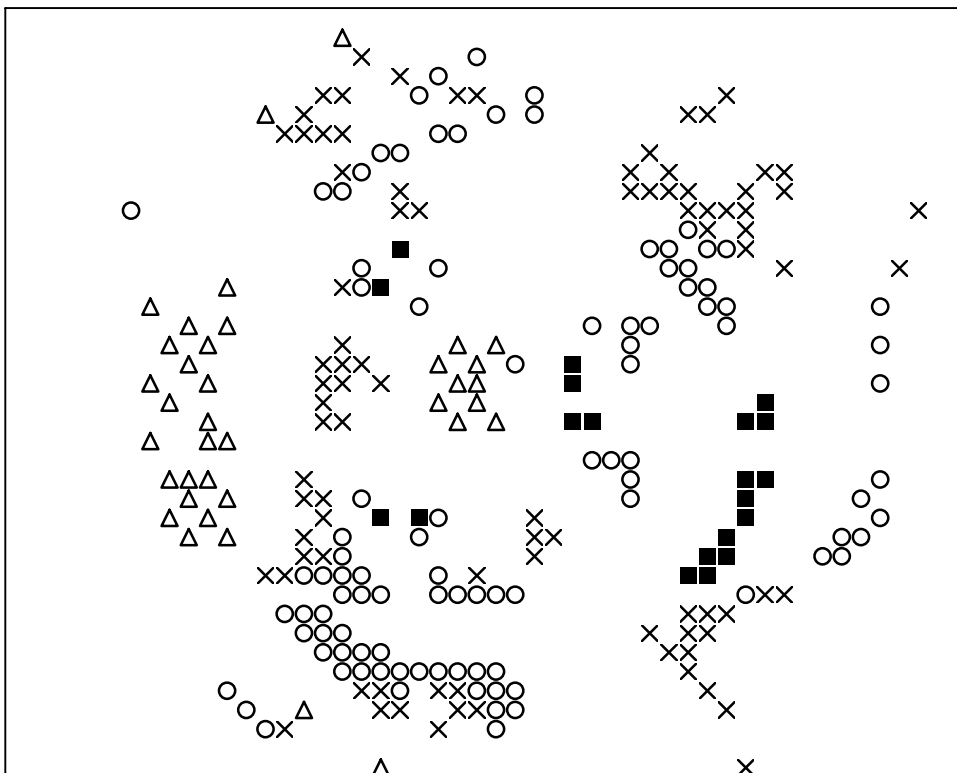
Basisplatte 1
Pixel-Farbe 365 = ■
Pixel-Farbe 371 = ○
Pixel-Farbe 376 = ×
Pixel-Farbe 388 = △



Basisplatte 1
Pixel-Farbe 407 = ■
Pixel-Farbe 412 = ○
Pixel-Farbe 414 = ×
Pixel-Farbe 425 = △



Basisplatte 1
Pixel-Farbe 441 = ■
Pixel-Farbe 461 = ○
Pixel-Farbe 470 = ×
Pixel-Farbe 481 = △



Basisplatte 1
Pixel-Farbe 483 = ■
Pixel-Farbe 541 = ○
Pixel-Farbe 543 = ×
Pixel-Farbe 552 = △