

Teilleiste

www.pixelhobby.com

Anzahl an Basisplatten = 1 (4" x 5")
Anzahl der Pixel-Vierecke = 20
Anzahl der Farben = 13

Erforderliche Pixel-Vierecke pro Farbe:

100 = 1
130 = 1
172 = 1
198 = 1
277 = 2
288 = 3
294 = 1
306 = 1
342 = 3
343 = 1
389 = 1
391 = 2
505 = 2

Material zu bestellen bei:

www.pixeln.ch

Pixelhobby Online Shop

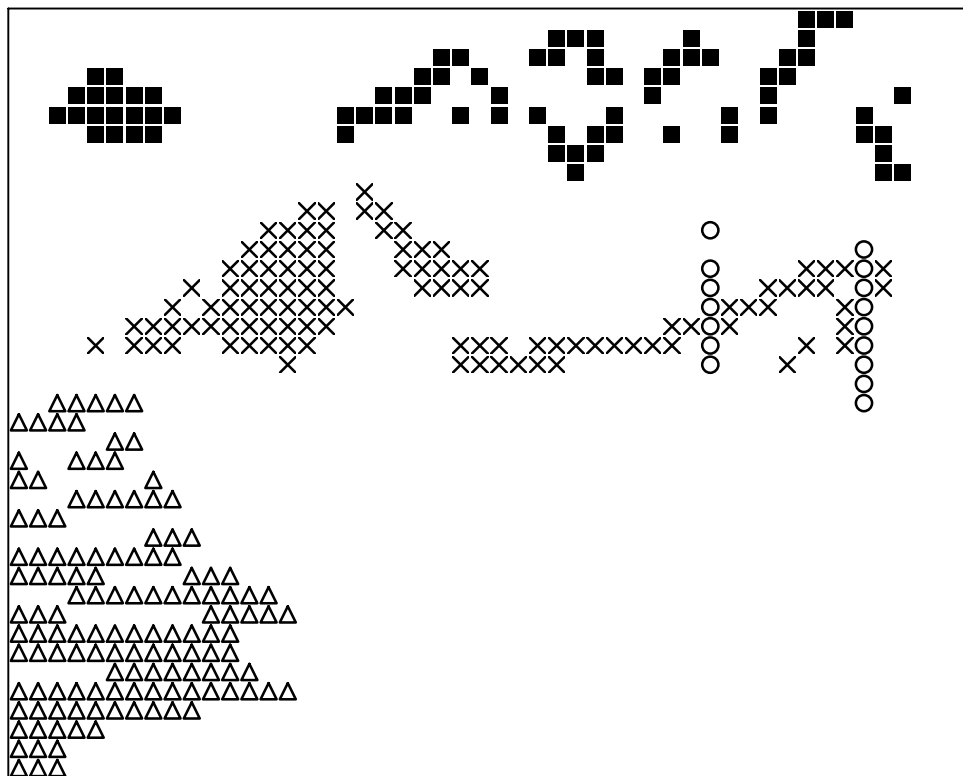
801256 Dinosaurus_sylvia
2015-12-09

Durch internationals Patent geschützt

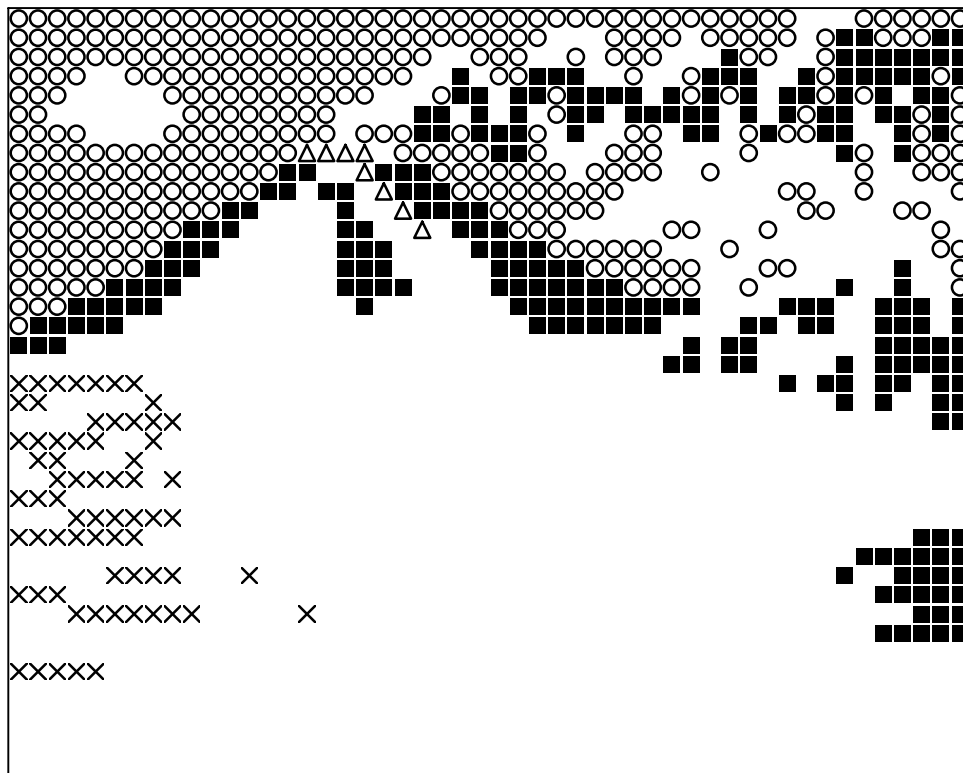


Frame: 1 x 1 L

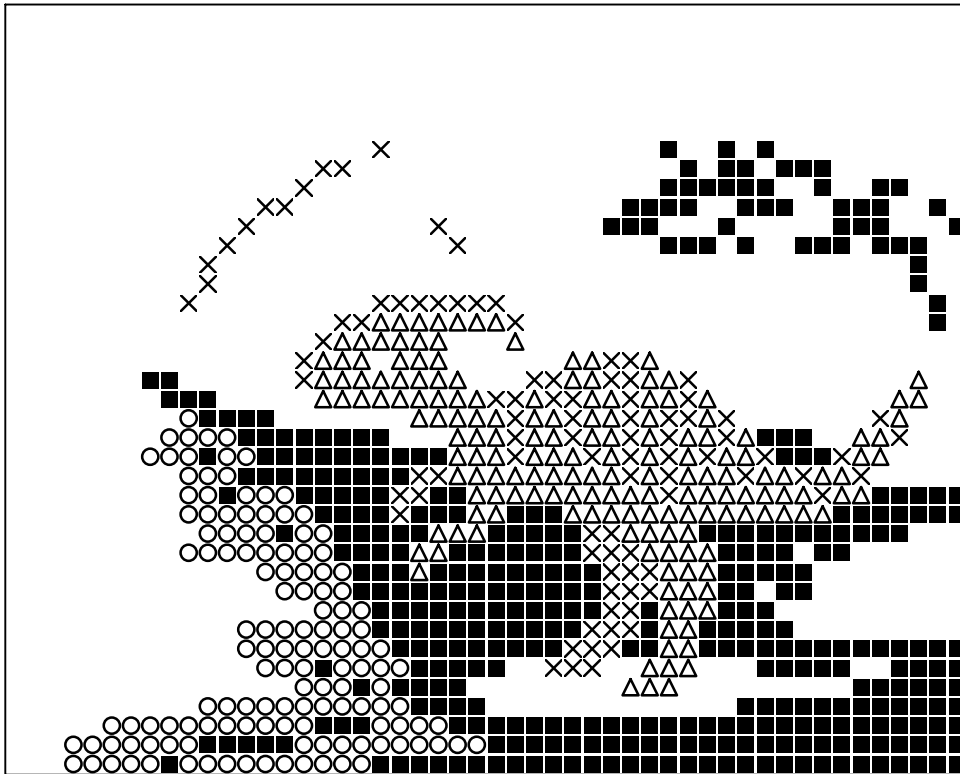




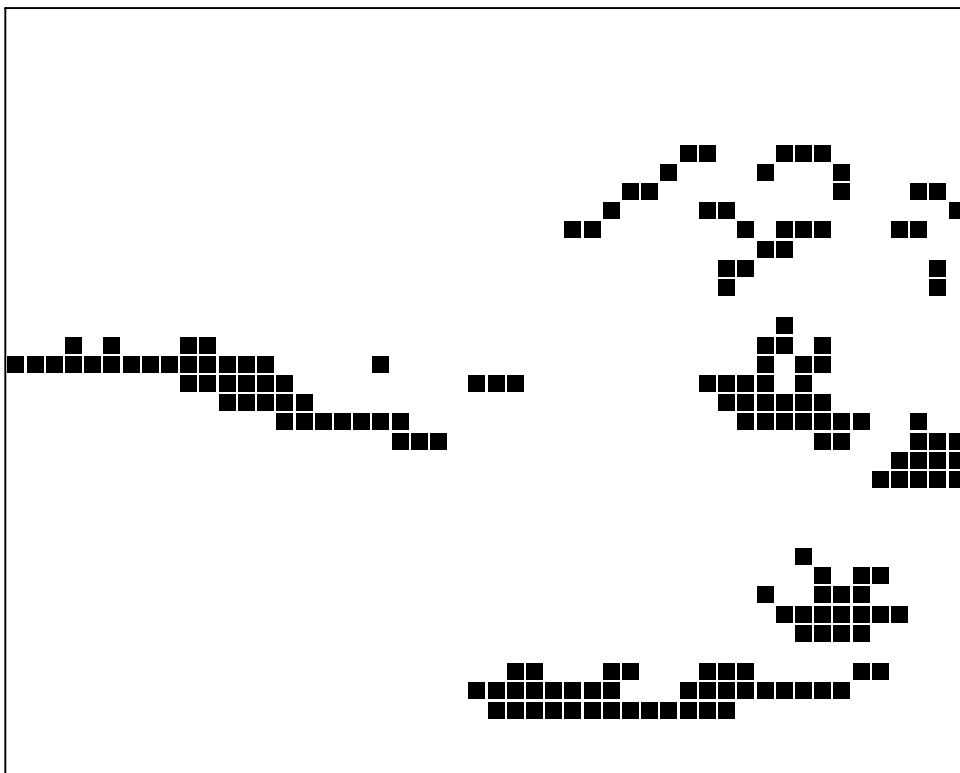
Basisplatte 1
Pixel-Farbe 100 = ■
Pixel-Farbe 130 = ○
Pixel-Farbe 172 = ×
Pixel-Farbe 198 = △



Basisplatte 1
Pixel-Farbe 277 = ■
Pixel-Farbe 288 = ○
Pixel-Farbe 294 = ×
Pixel-Farbe 306 = △



Basisplatte 1
Pixel-Farbe 342 = ■
Pixel-Farbe 343 = ○
Pixel-Farbe 389 = ×
Pixel-Farbe 391 = △



Basisplatte 1
Pixel-Farbe 505 = ■