

Teilleiste

www.pixelhobby.com

Anzahl an Basisplatten = 1 (4" x 5")
Anzahl der Pixel-Vierecke = 32
Anzahl der Farben = 27

Erforderliche Pixel-Vierecke pro Farbe:

100 = 1
109 = 1
146 = 1
180 = 1
215 = 1
216 = 1
245 = 1
262 = 1
288 = 2
300 = 2
316 = 1
319 = 1
321 = 1
330 = 1
341 = 1
342 = 1
362 = 1
376 = 1
393 = 1
404 = 3
419 = 1
466 = 1
468 = 2
484 = 1
502 = 1
503 = 1
528 = 1

Material zu bestellen bei:

www.pixeln.ch

Pixelhobby Online Shop

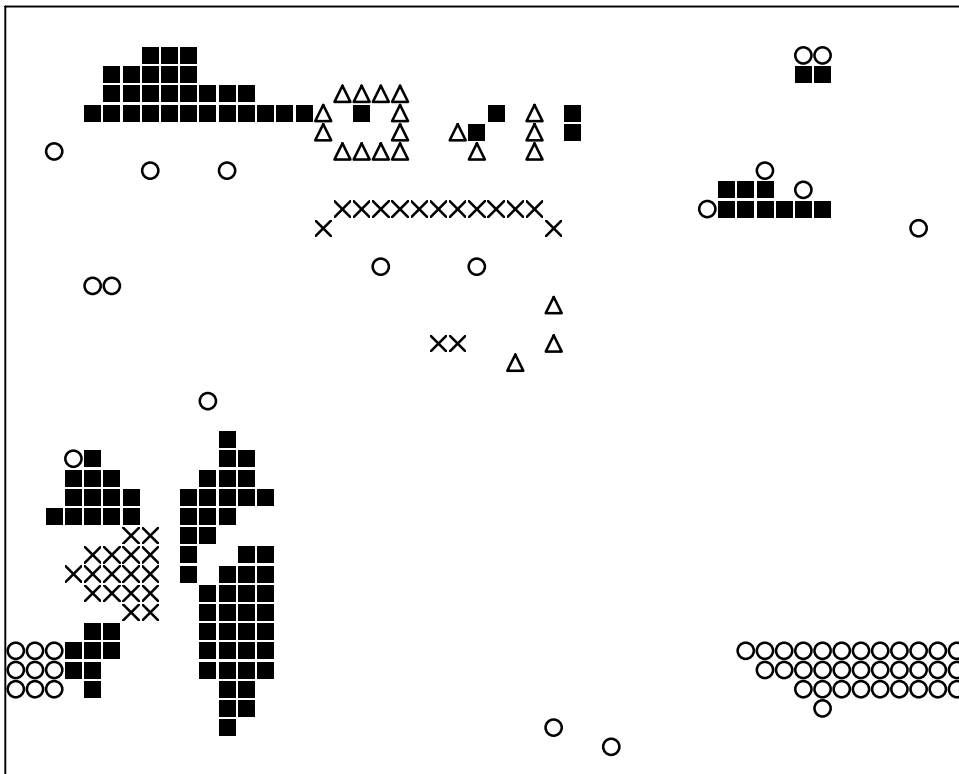
801207_Piloot_Ina's Design
2016-10-10

Durch internationales Patent geschützt

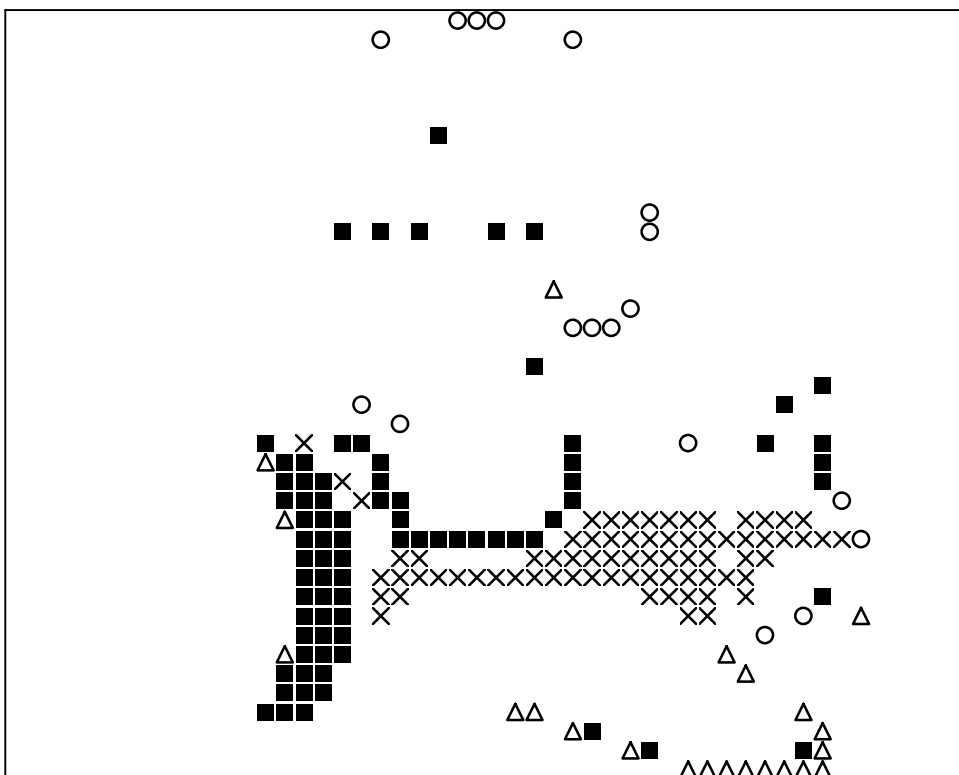


Frame: 1 x 1 L

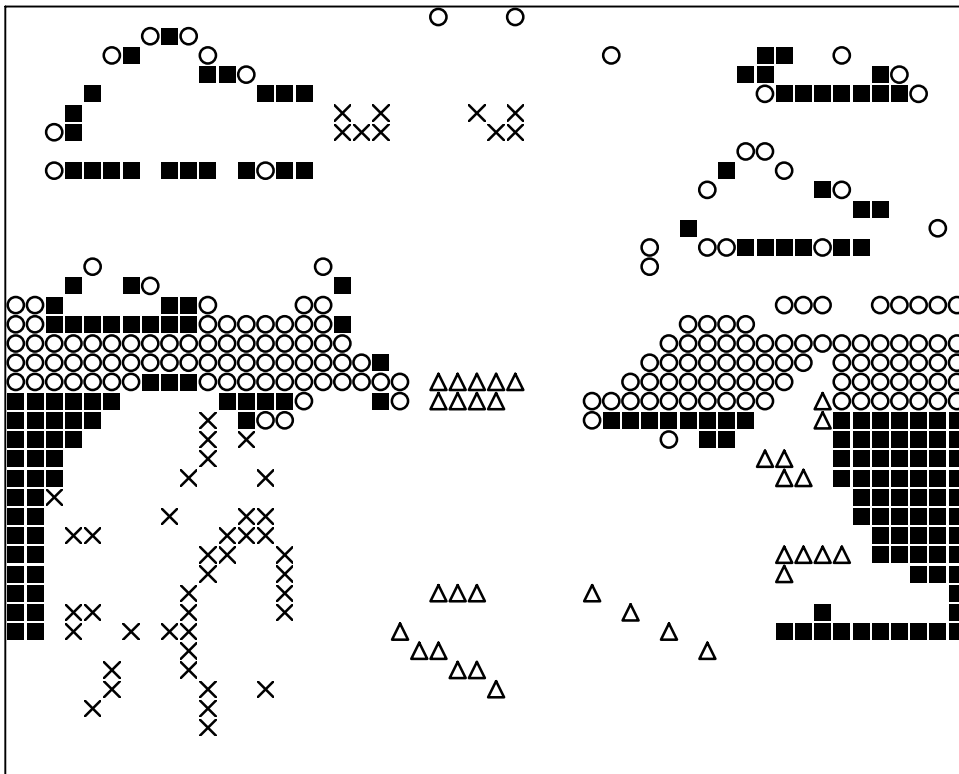




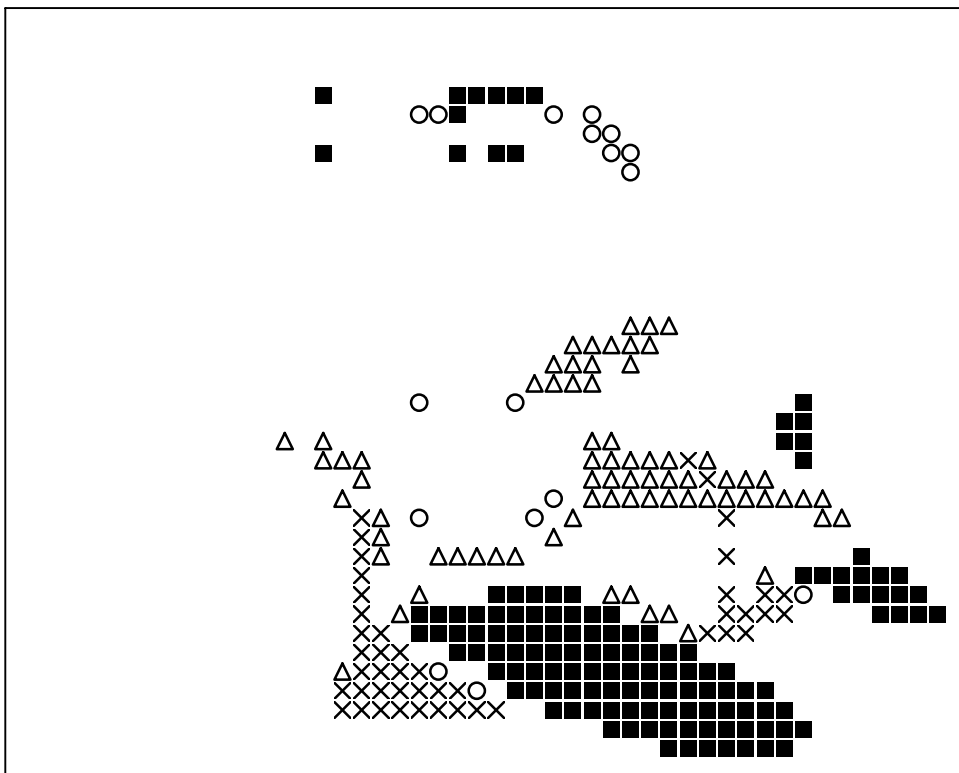
Basisplatte 1
Pixel-Farbe 100 = ■
Pixel-Farbe 109 = ○
Pixel-Farbe 146 = ×
Pixel-Farbe 180 = △



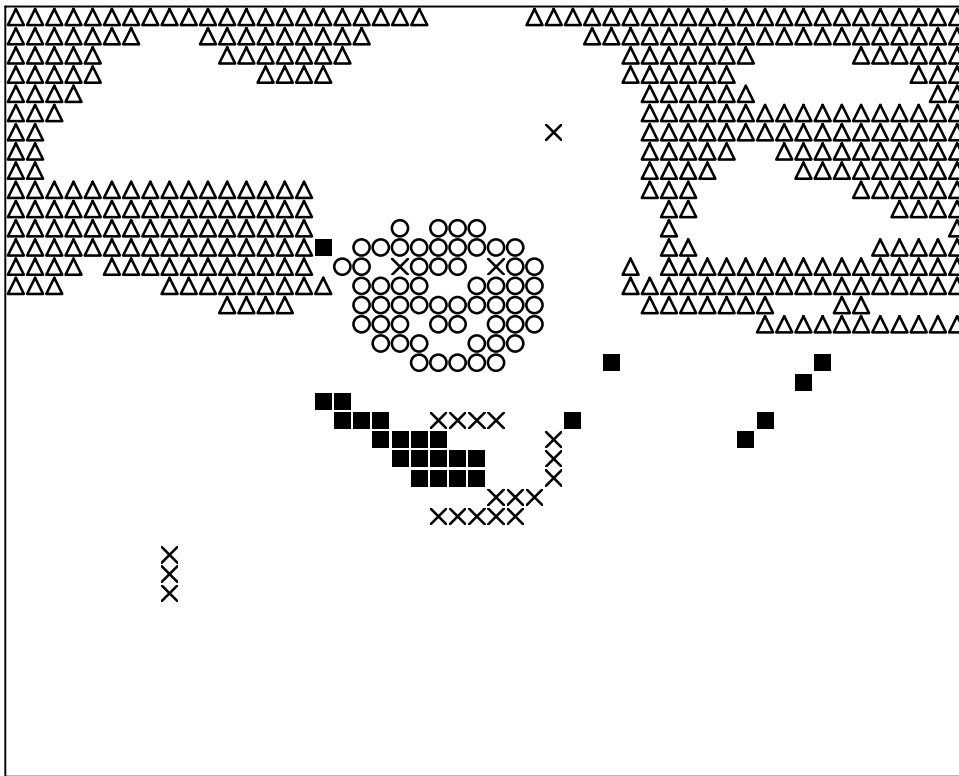
Basisplatte 1
Pixel-Farbe 215 = ■
Pixel-Farbe 216 = ○
Pixel-Farbe 245 = ×
Pixel-Farbe 262 = △



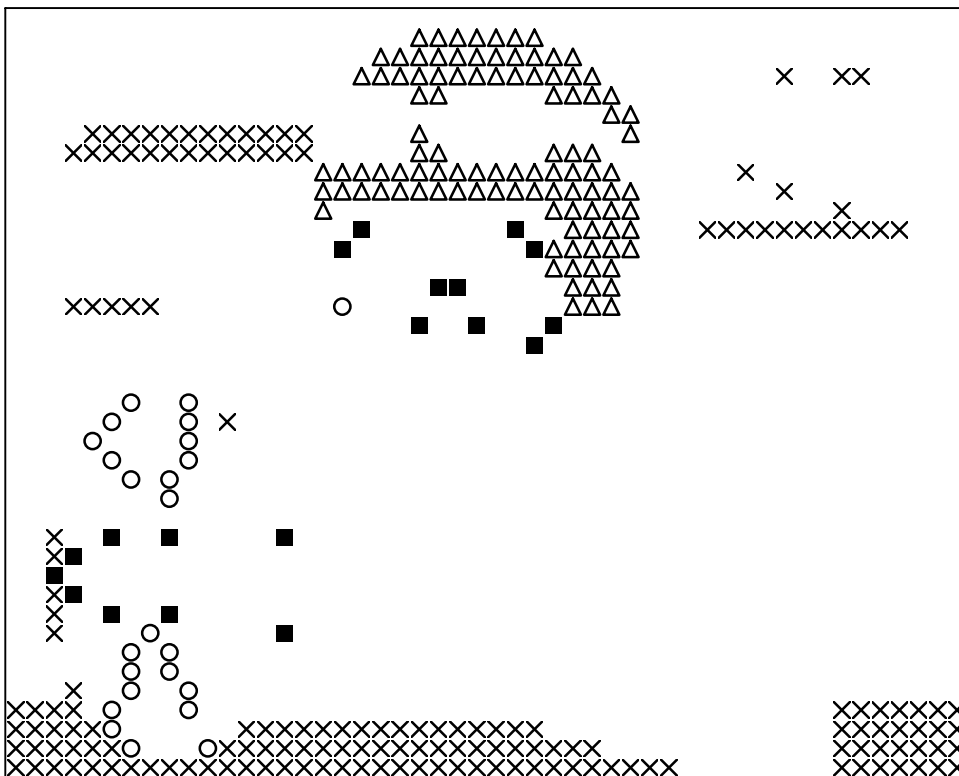
Basisplatte 1
Pixel-Farbe 288 = ■
Pixel-Farbe 300 = ○
Pixel-Farbe 316 = ×
Pixel-Farbe 319 = △



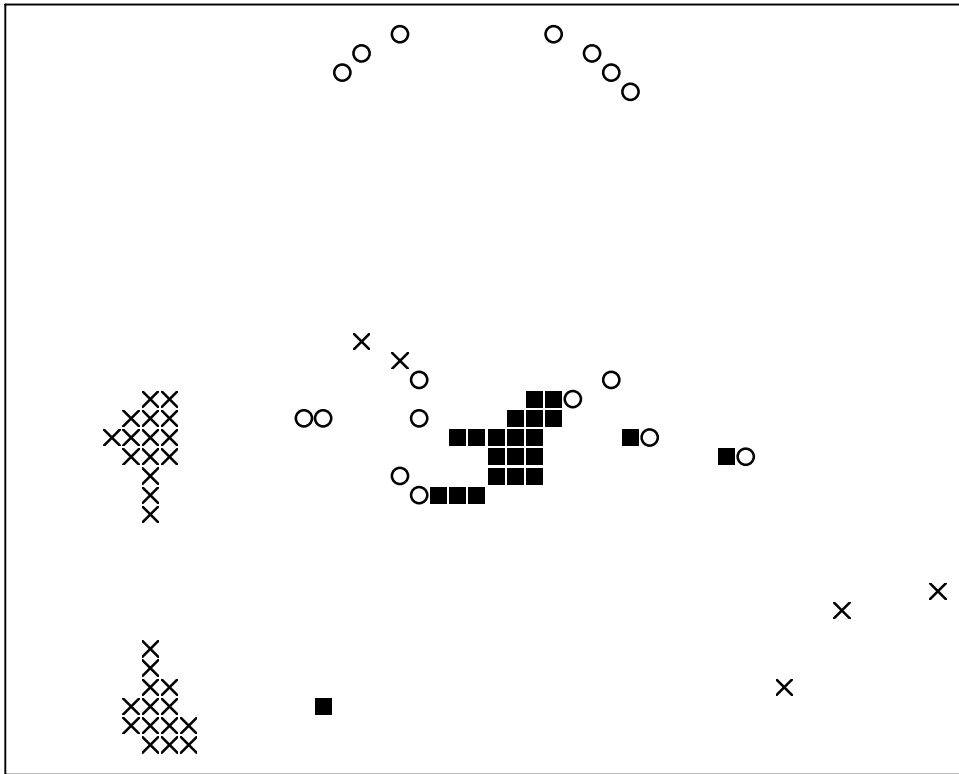
Basisplatte 1
Pixel-Farbe 321 = ■
Pixel-Farbe 330 = ○
Pixel-Farbe 341 = ×
Pixel-Farbe 342 = △



Basisplatte 1
Pixel-Farbe 362 = ■
Pixel-Farbe 376 = ○
Pixel-Farbe 393 = ×
Pixel-Farbe 404 = △



Basisplatte 1
Pixel-Farbe 419 = ■
Pixel-Farbe 466 = ○
Pixel-Farbe 468 = ×
Pixel-Farbe 484 = △



Basisplatte 1
Pixel-Farbe 502 = ■
Pixel-Farbe 503 = ○
Pixel-Farbe 528 = ×