

Teilleiste

www.pixelhobby.com

Anzahl an Basisplatten = 1 (4" x 5")
Anzahl der Pixel-Vierecke = 23
Anzahl der Farben = 15

Erforderliche Pixel-Vierecke pro Farbe:

100 = 1
156 = 1
198 = 2
206 = 1
207 = 1
220 = 1
224 = 1
245 = 1
288 = 5
293 = 1
306 = 1
343 = 1
389 = 2
412 = 1
468 = 3

Material zu bestellen bei:

www.pixeln.ch

Pixelhobby Online Shop

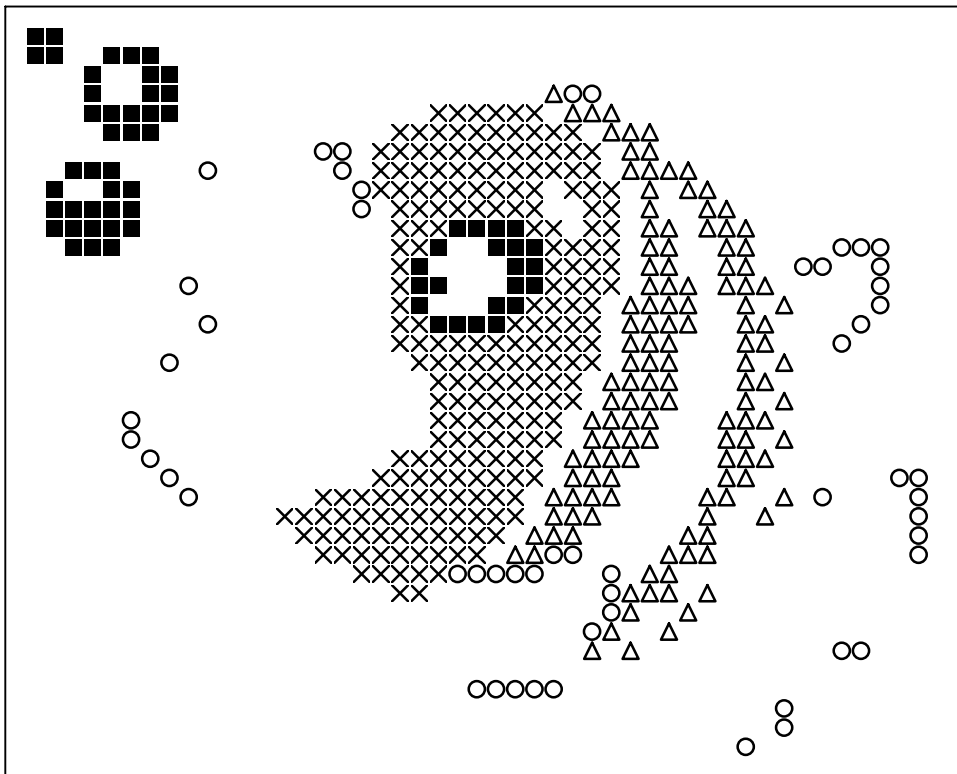
801035_Vrolijke vis_1x1_Linda Wright-b
2017-06-23

Durch internationals Patent geschützt

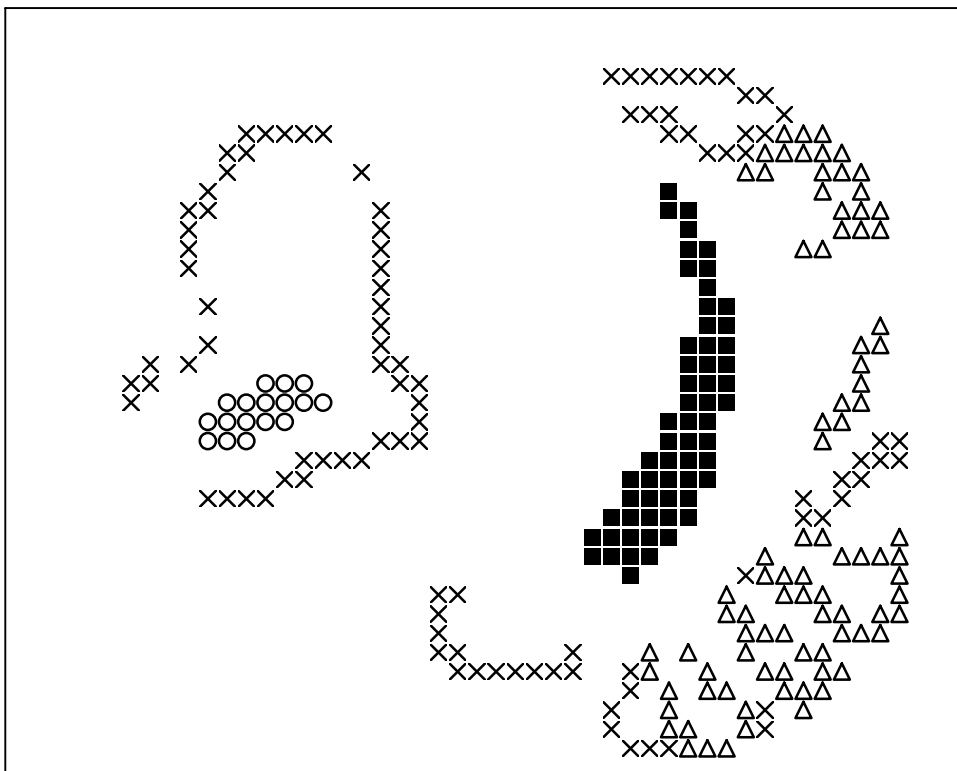


Frame: 1 x 1 L

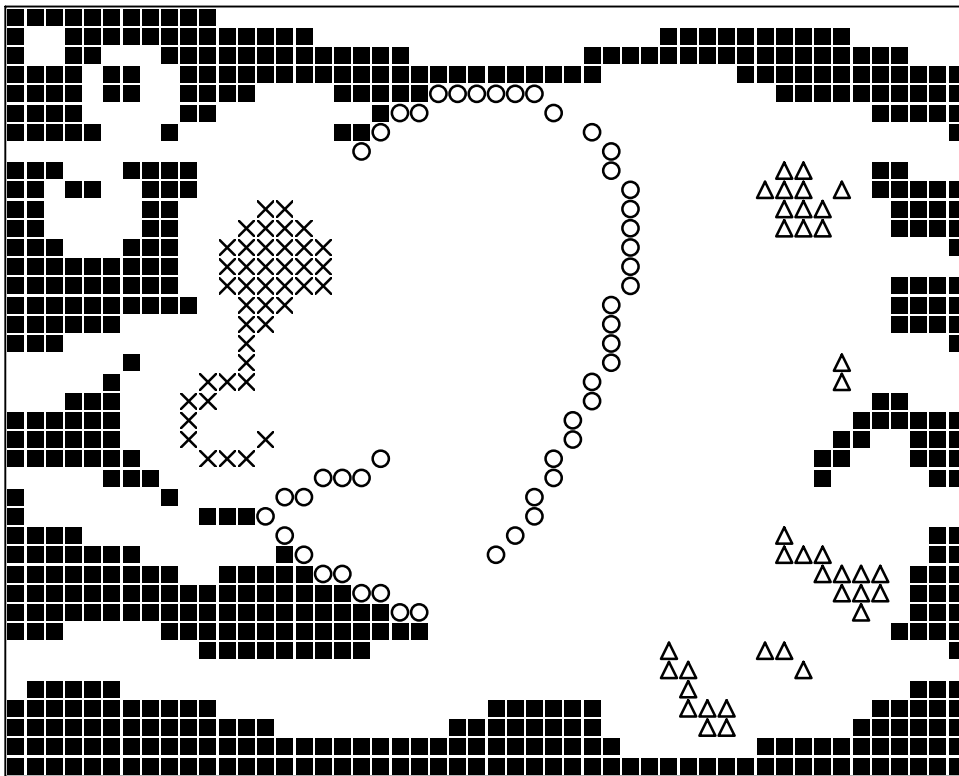




Basisplatte 1
Pixel-Farbe 100 = ■
Pixel-Farbe 156 = ○
Pixel-Farbe 198 = ×
Pixel-Farbe 206 = △



Basisplatte 1
Pixel-Farbe 207 = ■
Pixel-Farbe 220 = ○
Pixel-Farbe 224 = ×
Pixel-Farbe 245 = △



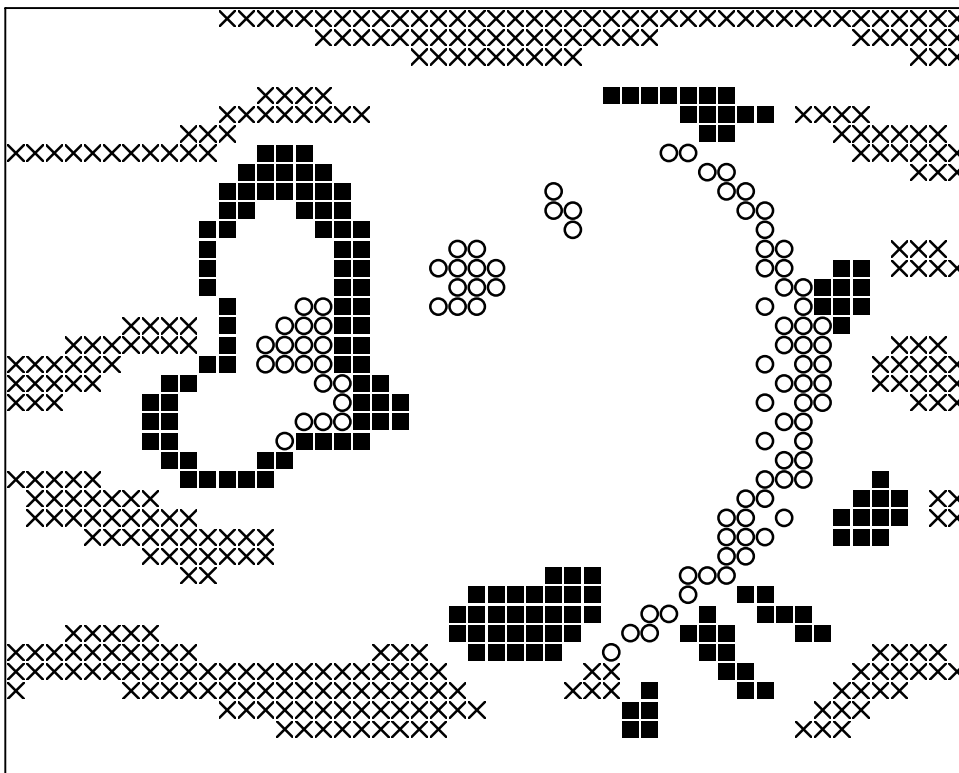
Basisplatte 1

Pixel-Farbe 288 = ■

Pixel-Farbe 293 = ○

Pixel-Farbe 306 = ×

Pixel-Farbe 343 = △



Basisplatte 1

Pixel-Farbe 389 = ■

Pixel-Farbe 412 = ○

Pixel-Farbe 468 = ×