

Teilleiste

www.pixelhobby.com

Anzahl an Basisplatten = 1 (4" x 5")
Anzahl der Pixel-Vierecke = 24
Anzahl der Farben = 16

Erforderliche Pixel-Vierecke pro Farbe:

100 = 1
172 = 1
213 = 4
223 = 1
237 = 2
277 = 2
358 = 1
381 = 1
401 = 1
411 = 2
441 = 1
495 = 1
521 = 2
535 = 1
536 = 1
553 = 2

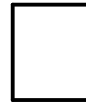
Material zu bestellen bei:

www.pixeln.ch

Pixelhobby Online Shop

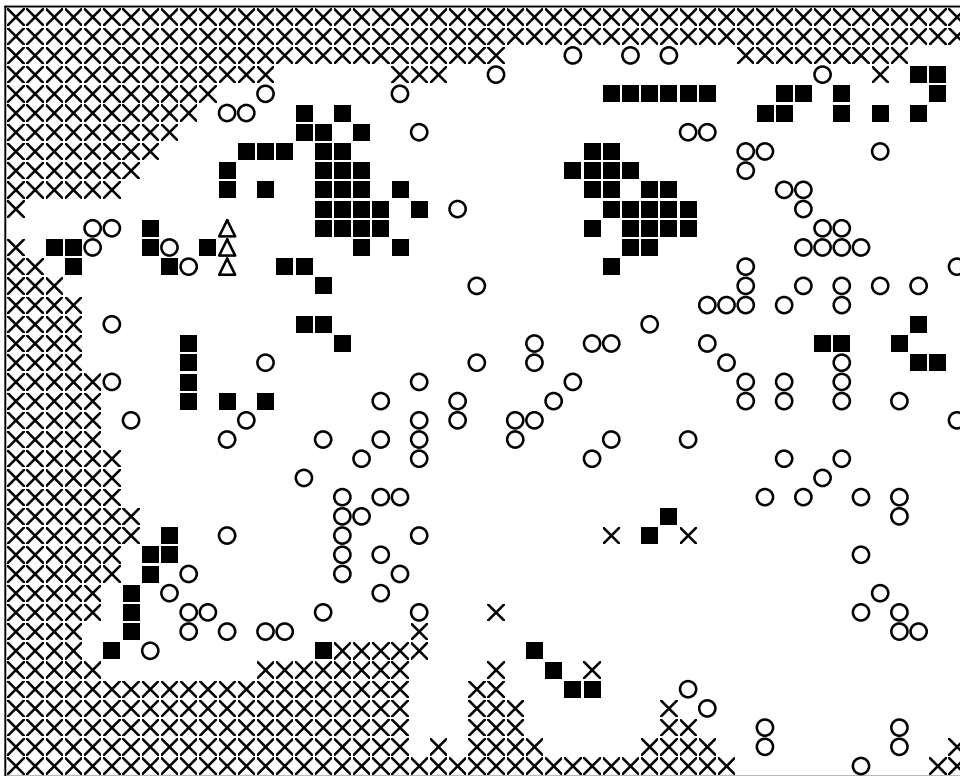
801448_Sitting-kitten
2019-01-30

Durch internationales Patent geschützt

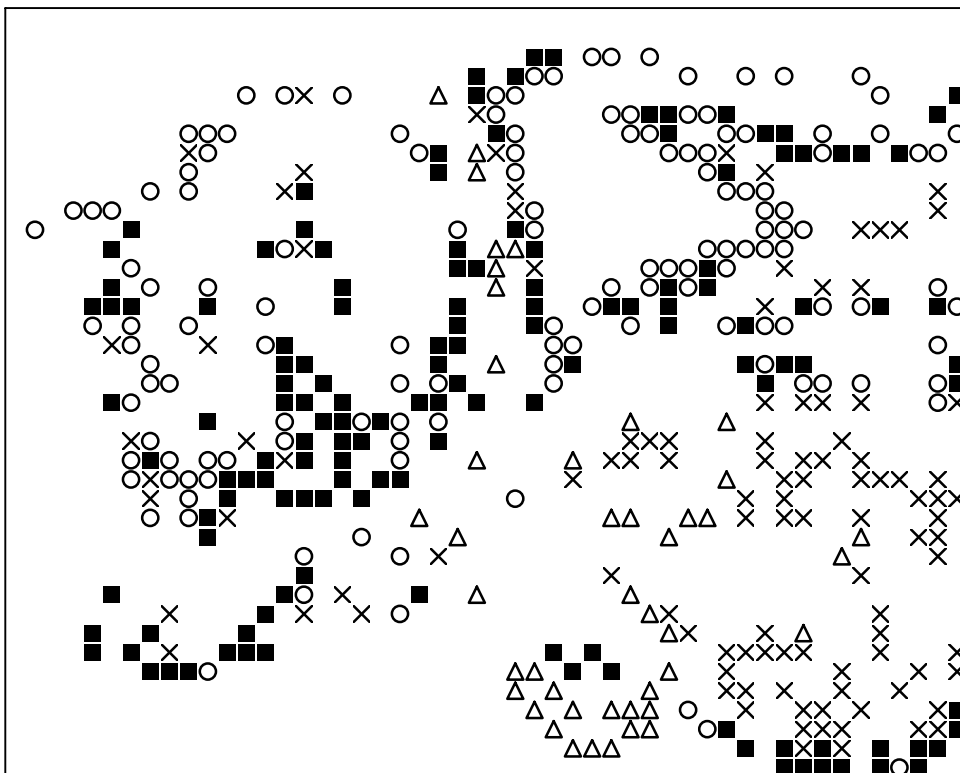


Frame: 1 x 1 P

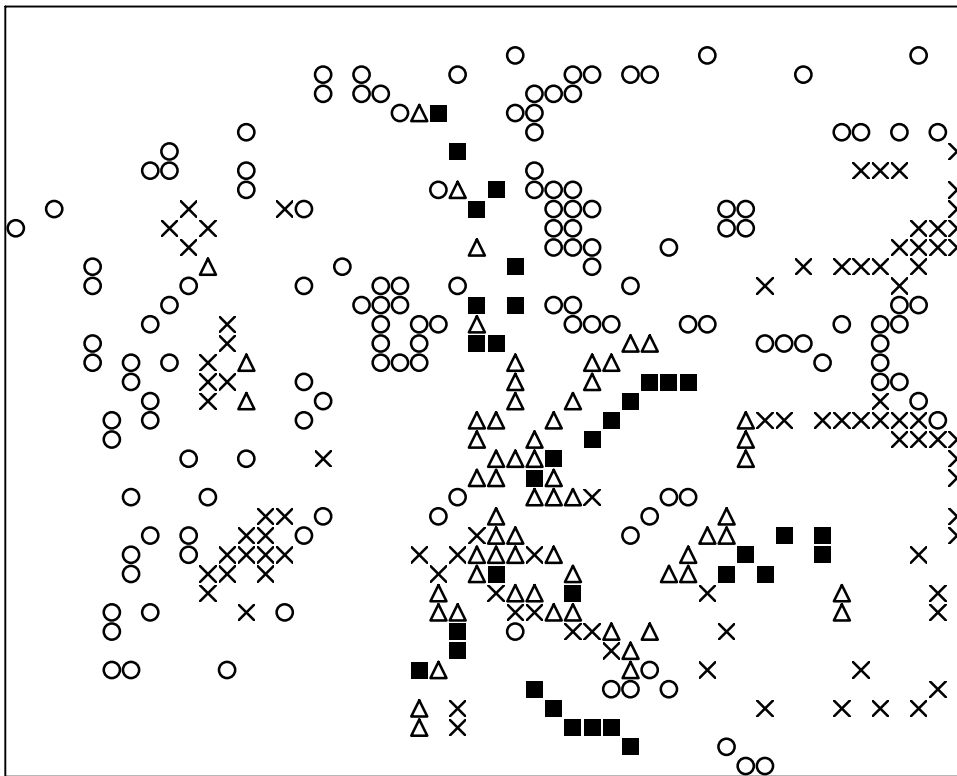




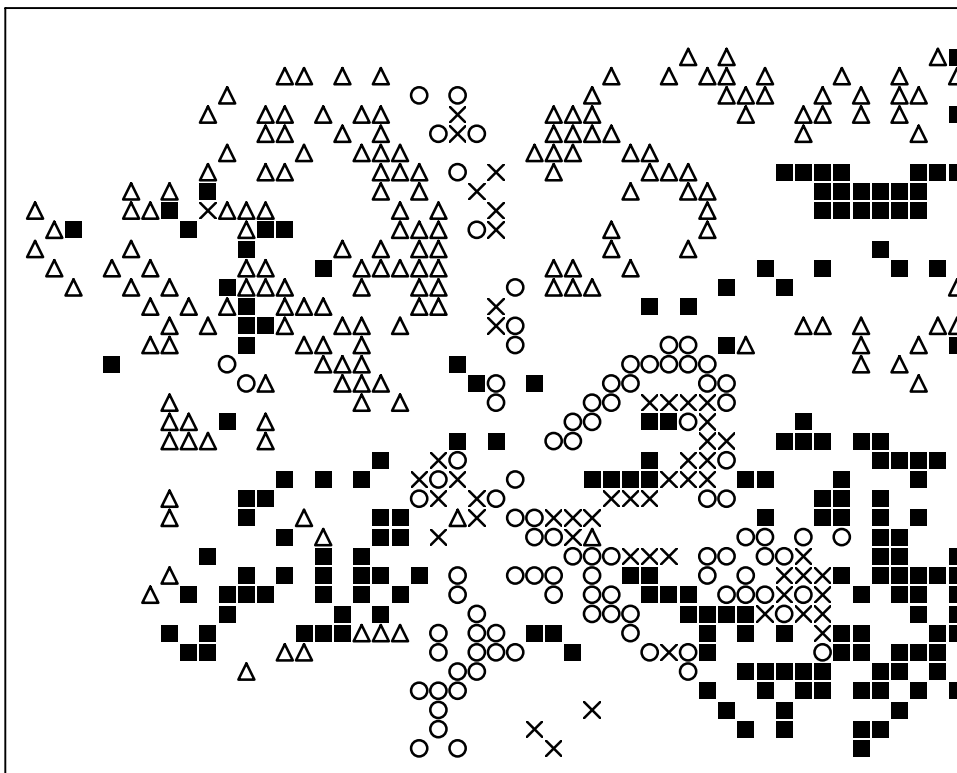
Basisplatte 1
Pixel-Farbe 100 = ■
Pixel-Farbe 172 = ○
Pixel-Farbe 213 = ×
Pixel-Farbe 223 = △



Basisplatte 1
Pixel-Farbe 237 = ■
Pixel-Farbe 277 = ○
Pixel-Farbe 358 = ×
Pixel-Farbe 381 = △



Basisplatte 1
Pixel-Farbe 401 = ■
Pixel-Farbe 411 = ○
Pixel-Farbe 441 = ×
Pixel-Farbe 495 = △



Basisplatte 1
Pixel-Farbe 521 = ■
Pixel-Farbe 535 = ○
Pixel-Farbe 536 = ×
Pixel-Farbe 553 = △