

## Teilleiste

www.pixelhobby.com

Anzahl an Basisplatten = 1 (4" x 5")  
Anzahl der Pixel-Vierecke = 23  
Anzahl der Farben = 15

Erforderliche Pixel-Vierecke pro Farbe:

100 = 1  
103 = 6  
170 = 2  
171 = 1  
178 = 2  
180 = 2  
237 = 1  
239 = 1  
274 = 1  
275 = 1  
307 = 1  
375 = 1  
412 = 1  
441 = 1  
553 = 1

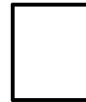
**Material zu bestellen bei:**

**[www.pixeln.ch](http://www.pixeln.ch)**

**Pixelhobby Online Shop**

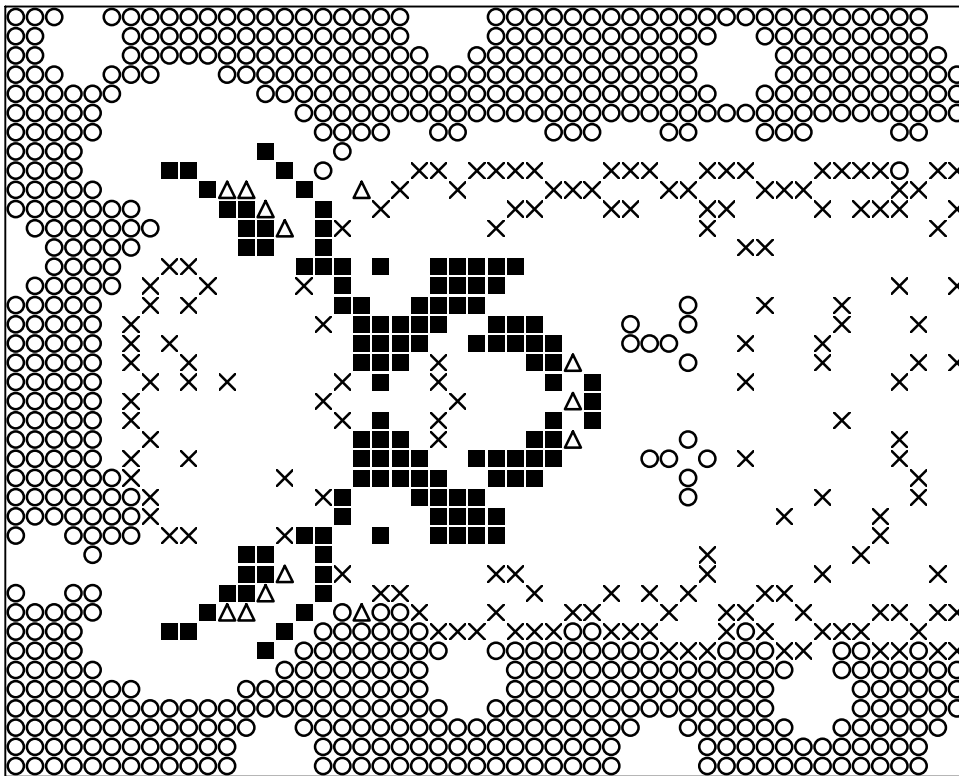
801440\_Alpaca-brown  
2019-01-30

Durch internationales Patent geschützt

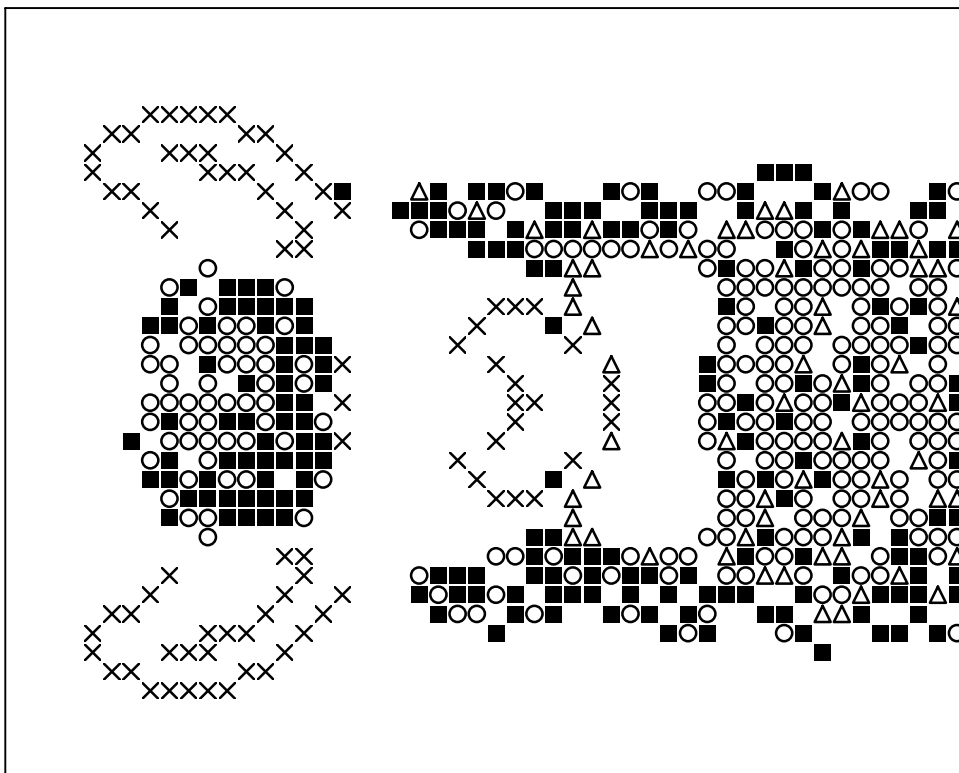


**Frame: 1 x 1 P**

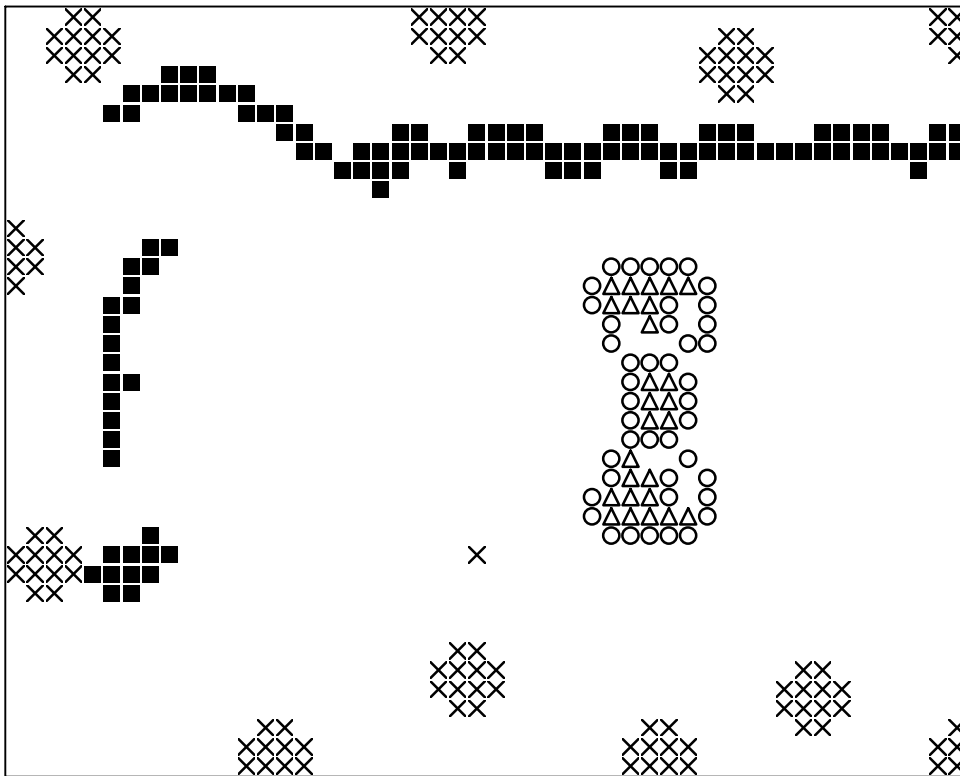




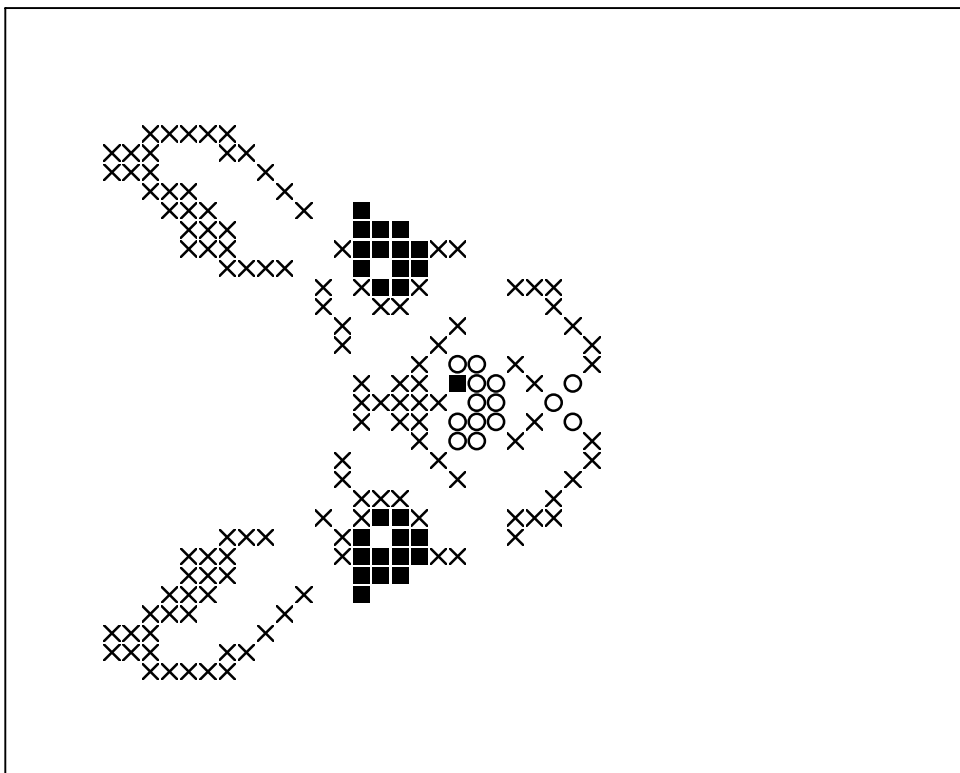
**Basisplatte 1**  
Pixel-Farbe 100 = ■  
Pixel-Farbe 103 = ○  
Pixel-Farbe 170 = ×  
Pixel-Farbe 171 = △



**Basisplatte 1**  
Pixel-Farbe 178 = ■  
Pixel-Farbe 180 = ○  
Pixel-Farbe 237 = ×  
Pixel-Farbe 239 = △



**Basisplatte 1**  
Pixel-Farbe 274 = ■  
Pixel-Farbe 275 = ○  
Pixel-Farbe 307 = ×  
Pixel-Farbe 375 = △



**Basisplatte 1**  
Pixel-Farbe 412 = ■  
Pixel-Farbe 441 = ○  
Pixel-Farbe 553 = ×